

Weekly SLA Customer Report

Customer CIW Production
 Database ID 45



=====
 HARDDISK USAGE CIW_PRD_ORACLE1
 =====

	Total disk space on C (GB)	Free disk space on C (GB)	Total disk space on D (GB)	Free disk space on D (GB)	Total disk space on E (GB)	Free disk space on E (GB)
9-8-2014	276	155	279	186	279	50
8-8-2014	276	155	279	186	279	51
7-8-2014	276	156	279	186	279	53
6-8-2014	276	155	279	186	279	54
5-8-2014	276	156	279	186	279	56
4-8-2014	276	156	279	186	279	57
3-8-2014	276	156	279	186	279	59

=====
 HARDDISK USAGE CIW_PRD_ORACLE2
 =====

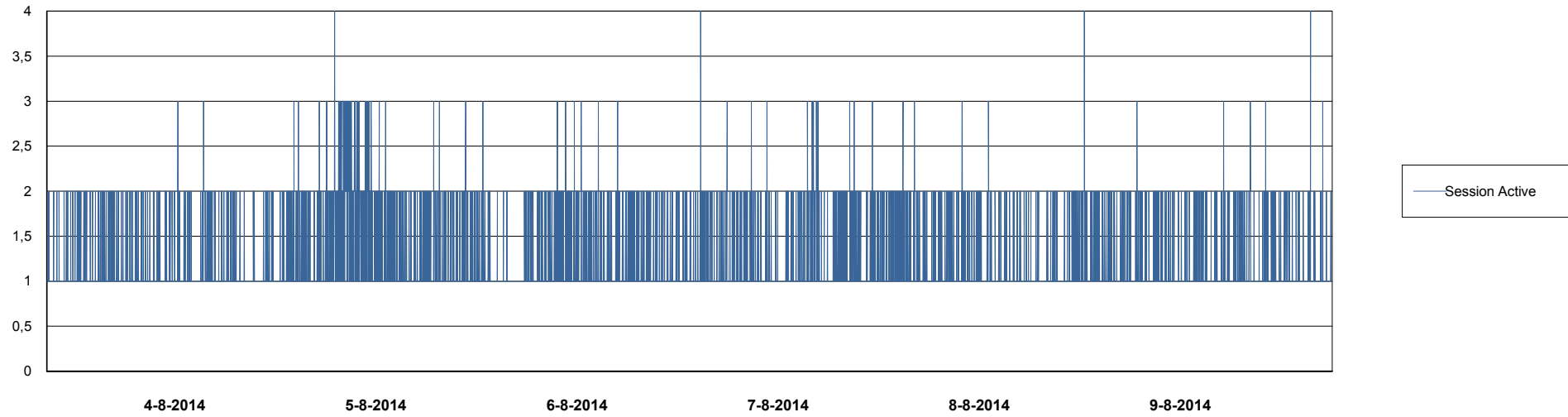
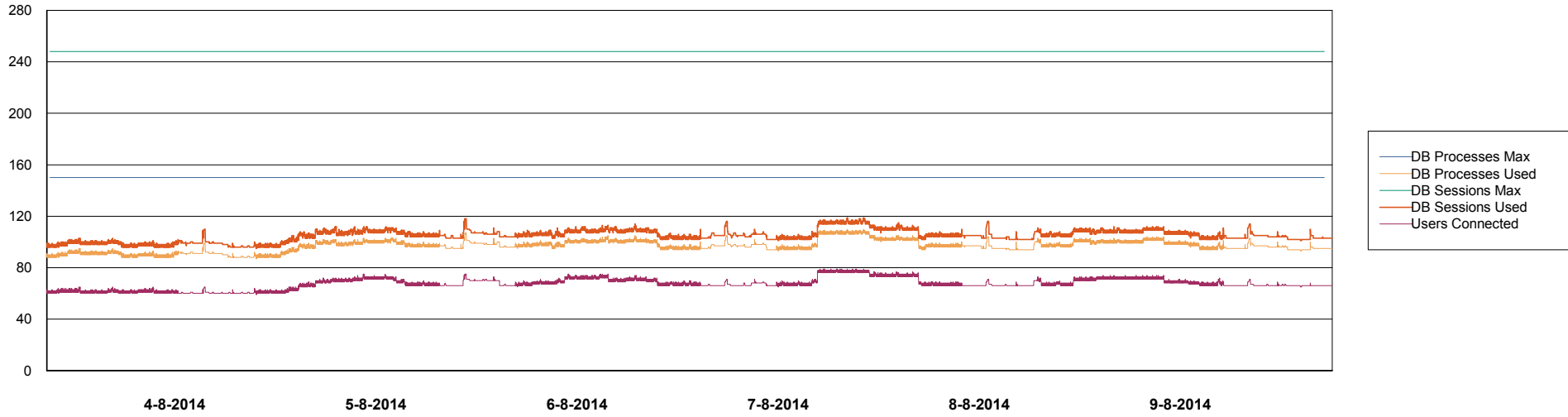
	Total disk space on C (GB)	Free disk space on C (GB)	Total disk space on D (GB)	Free disk space on D (GB)	Total disk space on E (GB)	Free disk space on E (GB)
9-8-2014	555	404	558	550	558	395
8-8-2014	555	404	558	550	558	395
7-8-2014	555	404	558	550	558	396
6-8-2014	555	404	558	550	558	397
5-8-2014	555	404	558	550	558	398
4-8-2014	555	404	558	550	558	398
3-8-2014	555	404	558	550	558	399

Weekly SLA Customer Report

Customer CIW Production
Database ID 45



DATABASE PERFORMANCE CIWDB_Production

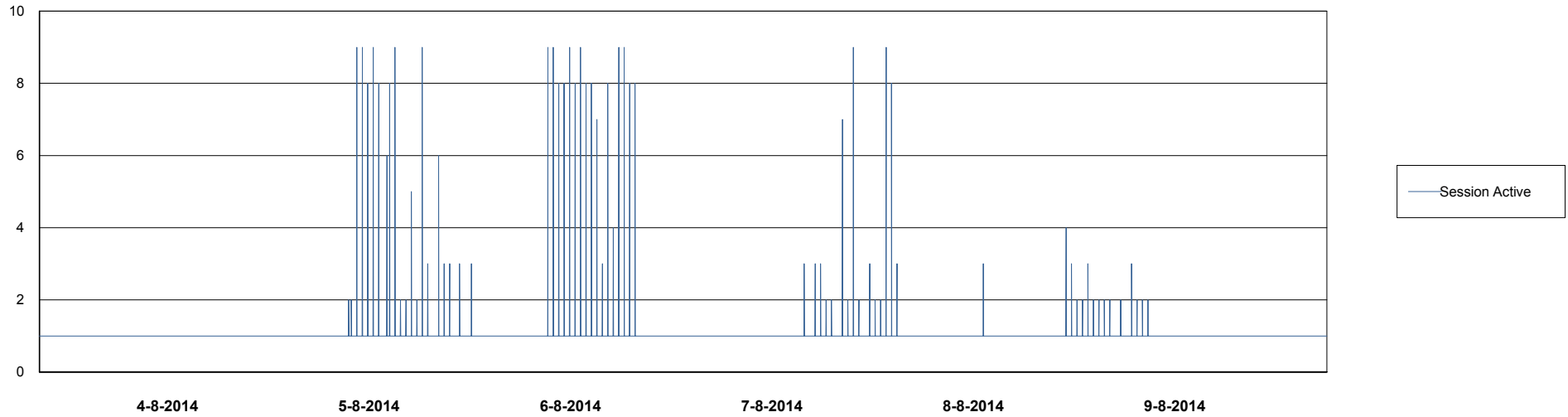
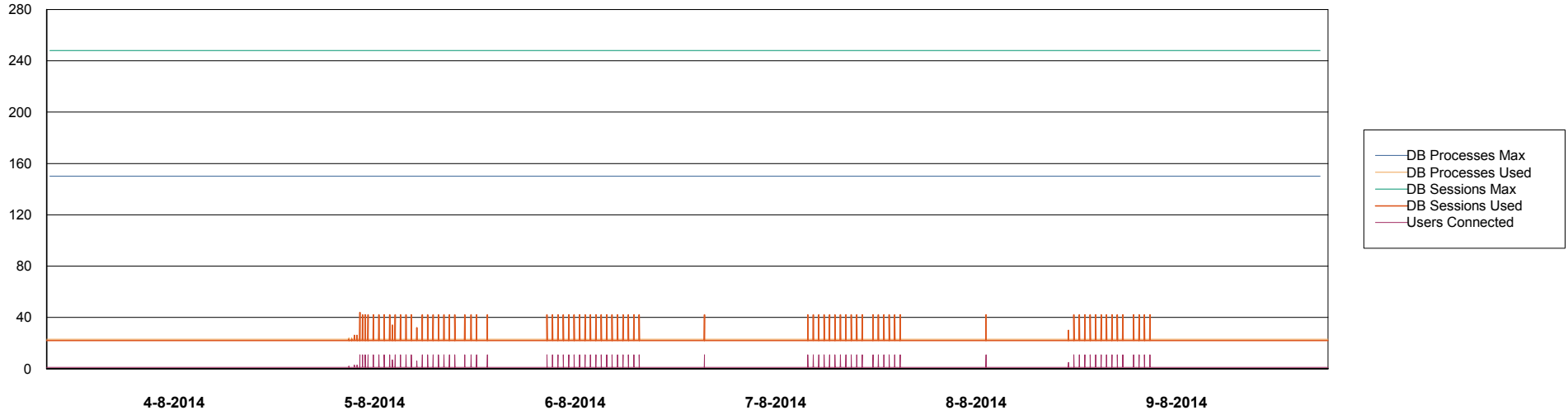


Weekly SLA Customer Report

Customer CIW Production
Database ID 45



DATABASE PERFORMANCE CIWDB_Standby



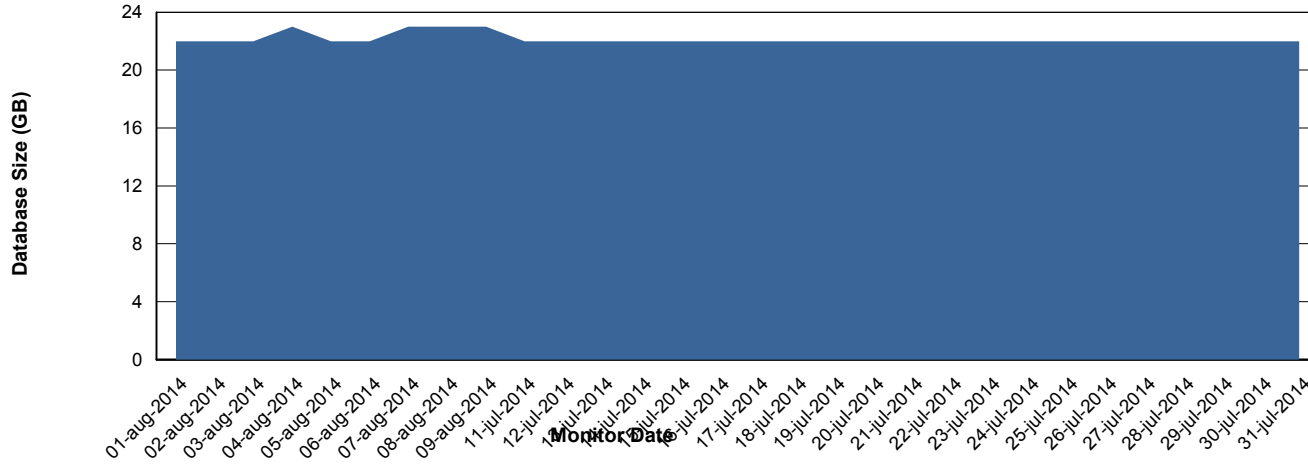
Weekly SLA Customer Report

Customer CIW Production
 Database ID 45



=====
 DATABASE SIZE CIWDB_Production
 =====

Database growth over last month



=====
 DATABASE TABLESPACES CIWDB_Production
 =====

TOTAL DATABASE SIZE PER TABLESPACE

Date	Tablespace Name	Filesize (Gb)	Usedsize (Gb)	Percentage free
9-8-2014	ABSDATA	27	20	26
	INDX	3	1	67
8-8-2014	ABSDATA	27	20	26
	INDX	3	1	67
7-8-2014	ABSDATA	27	20	26
	INDX	3	1	67
6-8-2014	ABSDATA	27	20	26
	INDX	3	1	67
5-8-2014	ABSDATA	27	20	26
	INDX	3	1	67
4-8-2014	ABSDATA	27	20	26
	INDX	3	1	67
3-8-2014	ABSDATA	27	20	26
	INDX	3	1	67

Weekly SLA Customer Report

Customer CIW Production
Database ID 45



=====
STANDBY DATABASE HEALTH CIW Production
=====

Recovery lag for last 7 days

