

Weekly SLA Customer Report

Customer BCH Production
Database ID 28



=====
HARDDISK USAGE BCH_PRD_ABSAPP1
=====

	Total disk space on C (GB)	Free disk space on C (GB)	Total disk space on D (GB)	Free disk space on D (GB)
9-8-2014	45	10	30	30
8-8-2014	45	10	30	30
7-8-2014	45	10	30	30
6-8-2014	45	10	30	30
5-8-2014	45	10	30	30

=====
HARDDISK USAGE BCH_PRD_ABSAPP2
=====

	Total disk space on C (GB)	Free disk space on C (GB)	Total disk space on D (GB)	Free disk space on D (GB)
9-8-2014	45	10	30	30
8-8-2014	45	10	30	30
7-8-2014	45	10	30	30
6-8-2014	45	10	30	30
5-8-2014	45	10	30	30

=====
HARDDISK USAGE BCH_PRD_ABSAPP3
=====

Weekly SLA Customer Report

Customer BCH Production
 Database ID 28



	Total disk space on C (GB)	Free disk space on C (GB)	Total disk space on D (GB)	Free disk space on D (GB)
9-8-2014	45	12	30	30
8-8-2014	45	12	30	30
7-8-2014	45	12	30	30
6-8-2014	45	13	30	30
5-8-2014	45	13	30	30

=====
 HARDDISK USAGE BCH_PRD_ABSWEB1
 =====

	Used disk space on C (GB)	Total disk space on C (GB)	Free disk space on C (GB)
9-8-2014	30	45	15
8-8-2014	30	45	15
7-8-2014	30	45	15
6-8-2014	30	45	15
5-8-2014	30	45	15

=====
 HARDDISK USAGE BCH_PRD_ABSWEB2
 =====

	Used disk space on C (GB)	Total disk space on C (GB)	Free disk space on C (GB)
9-8-2014	29	45	16
8-8-2014	29	45	16
7-8-2014	29	45	16

Weekly SLA Customer Report

Customer BCH Production
 Database ID 28



	Used disk space on C (GB)	Total disk space on C (GB)	Free disk space on C (GB)
6-8-2014	29	45	16
5-8-2014	29	45	16

=====
 HARDDISK USAGE BCH_PRD_ORCDB1
 =====

	Total disk space on C (GB)	Free disk space on C (GB)	Total disk space on D (GB)	Free disk space on D (GB)
9-8-2014	278	164	278	52
8-8-2014	278	163	278	54
7-8-2014	278	163	278	57
6-8-2014	278	163	278	60
5-8-2014	278	163	278	63

=====
 HARDDISK USAGE BCH_PRD_ORCDB2
 =====

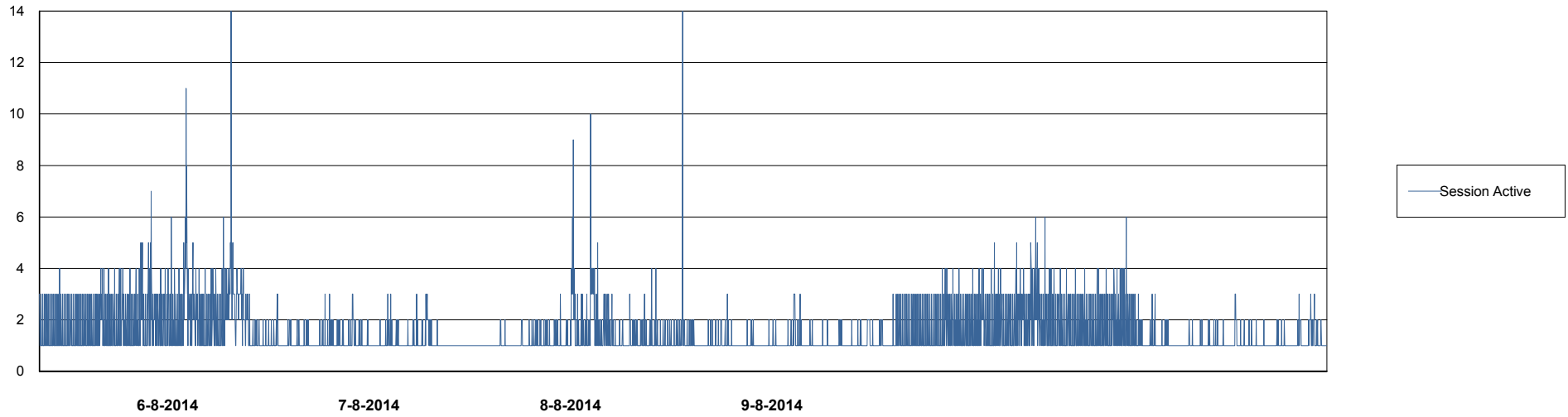
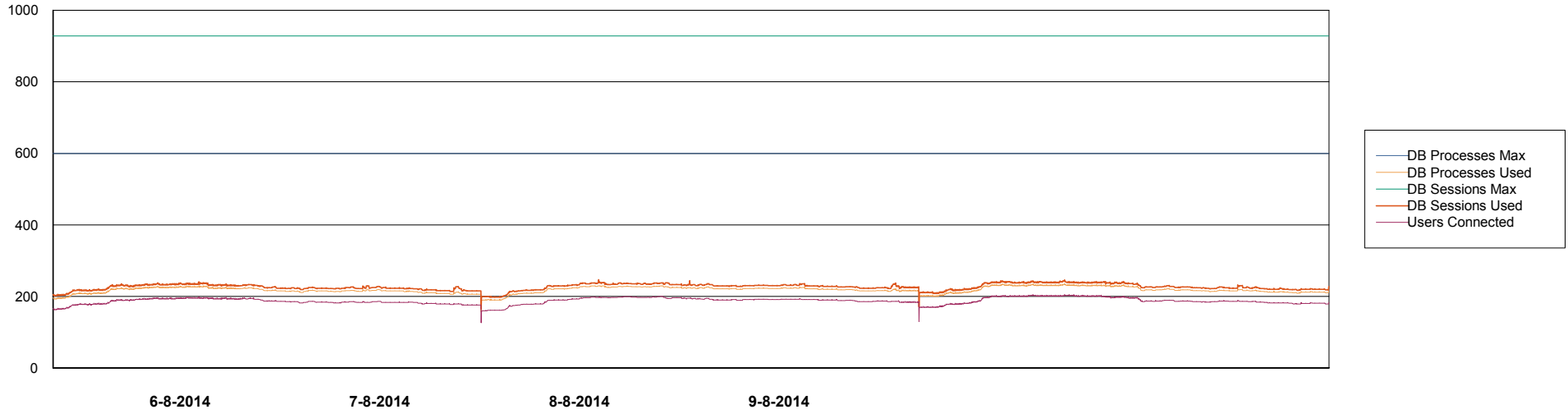
	Total disk space on C (GB)	Free disk space on C (GB)	Total disk space on D (GB)	Free disk space on D (GB)
9-8-2014	278	196	278	49
8-8-2014	278	196	278	52
7-8-2014	278	196	278	55
6-8-2014	278	196	278	57
5-8-2014	278	196	278	60

Weekly SLA Customer Report

Customer BCH Production
Database ID 28



DATABASE PERFORMANCE BCHDB_Production

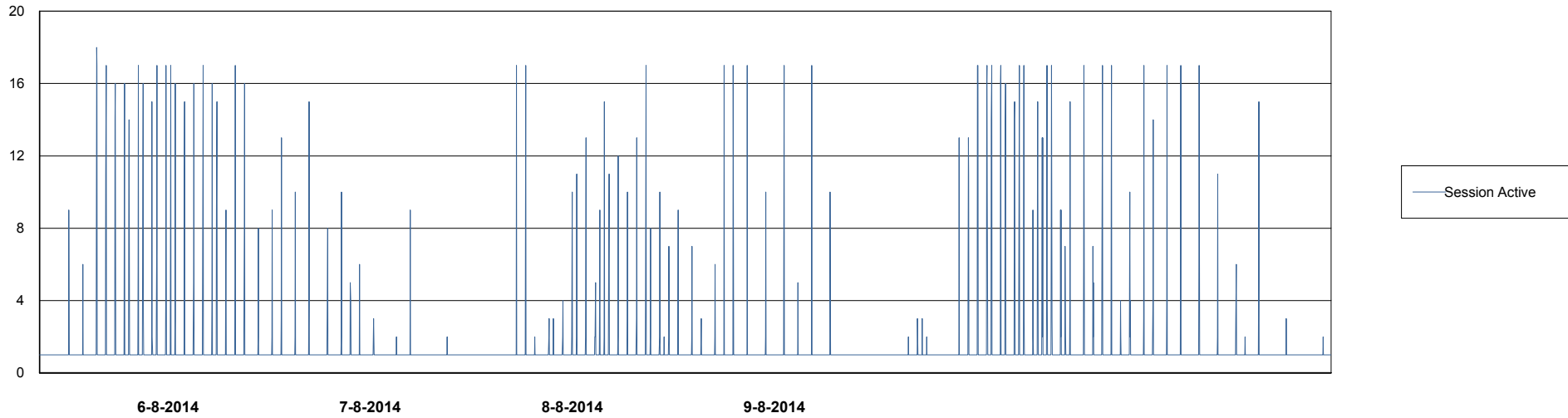
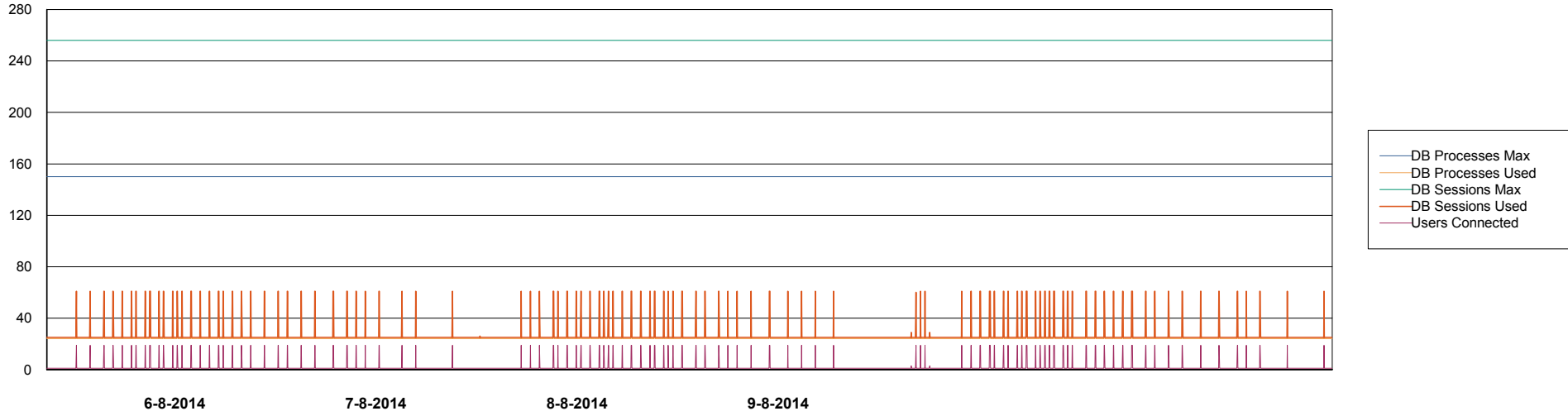


Weekly SLA Customer Report

Customer BCH Production
Database ID 28



DATABASE PERFORMANCE BCHDB_Standby



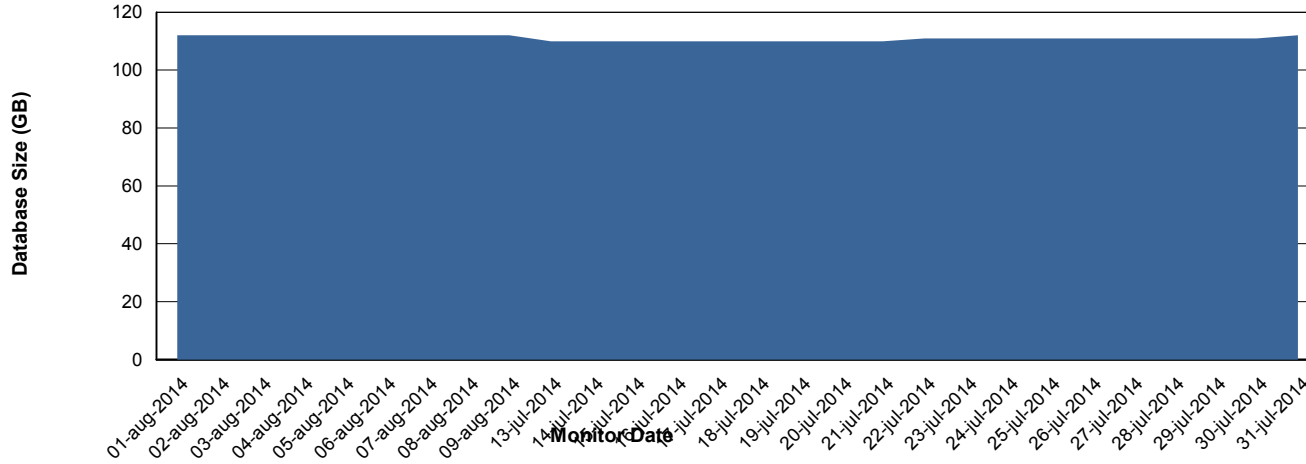
Weekly SLA Customer Report

Customer BCH Production
 Database ID 28



=====
 DATABASE SIZE BCHDB_Production
 =====

Database growth over last month



=====
 DATABASE TABLESPACES BCHDB_Production
 =====

TOTAL DATABASE SIZE PER TABLESPACE

Date	Tablespace Name	Filesize (Gb)	Usedsize (Gb)	Percentage free
9-8-2014	ABSDATA	26	0	100
	INDX	104	88	15
8-8-2014	ABSDATA	26	0	100
	INDX	104	88	15
7-8-2014	ABSDATA	26	0	100
	INDX	104	88	15
6-8-2014	ABSDATA	26	0	100
	INDX	104	88	15
5-8-2014	ABSDATA	26	0	100
	INDX	104	88	15

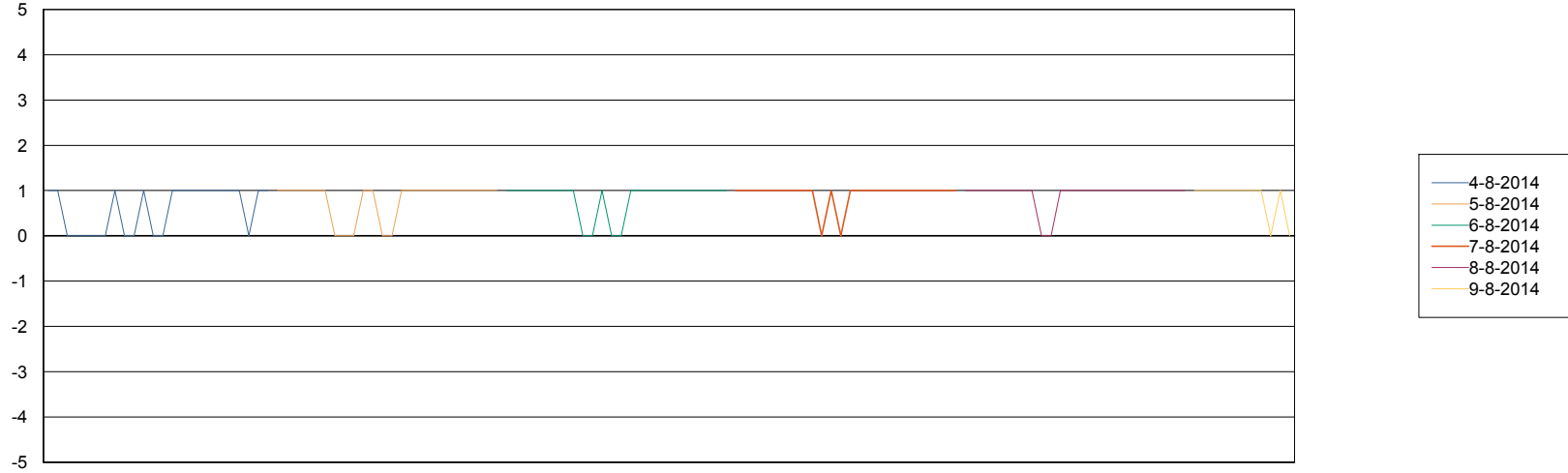
Weekly SLA Customer Report

Customer BCH Production
Database ID 28



=====
STANDBY DATABASE HEALTH BCH Production
=====

Recovery lag for last 7 days



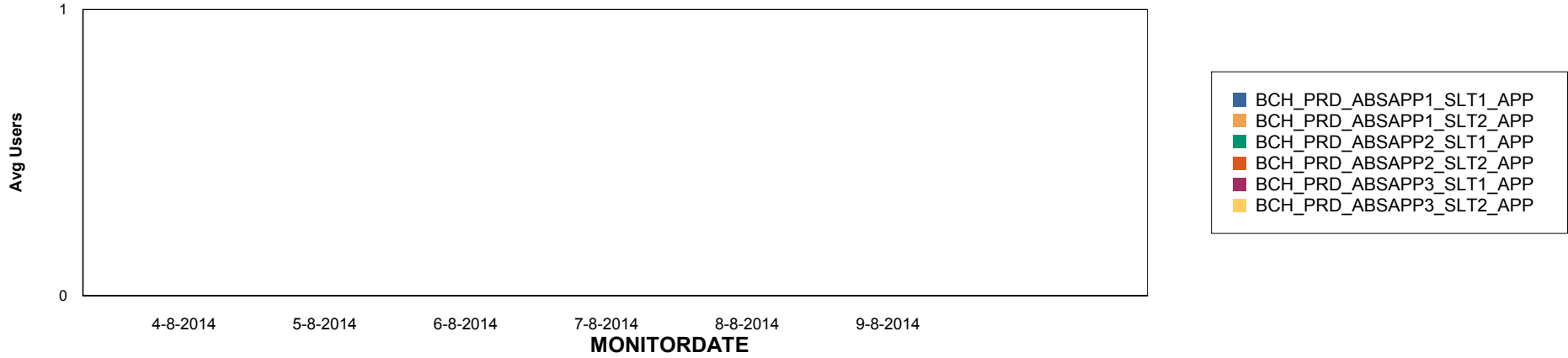
Weekly SLA Customer Report

Customer BCH Production
Database ID 28

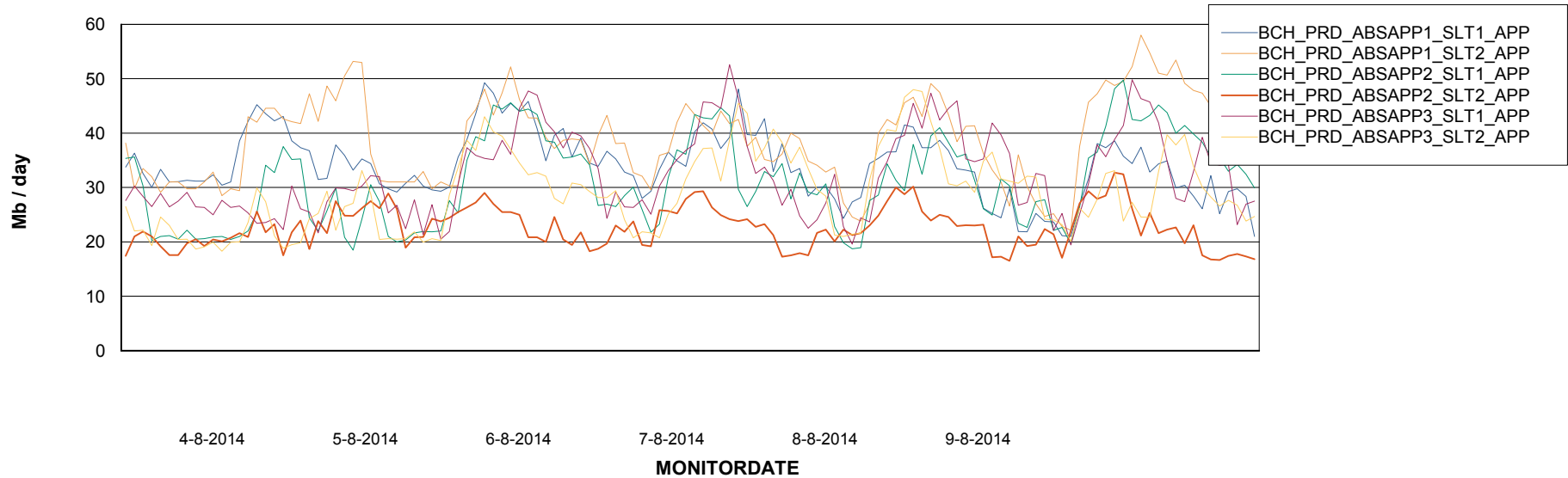


ABSolute Application Server Services

Disaster per ABS Server



Avg memory used per ABS Server Service



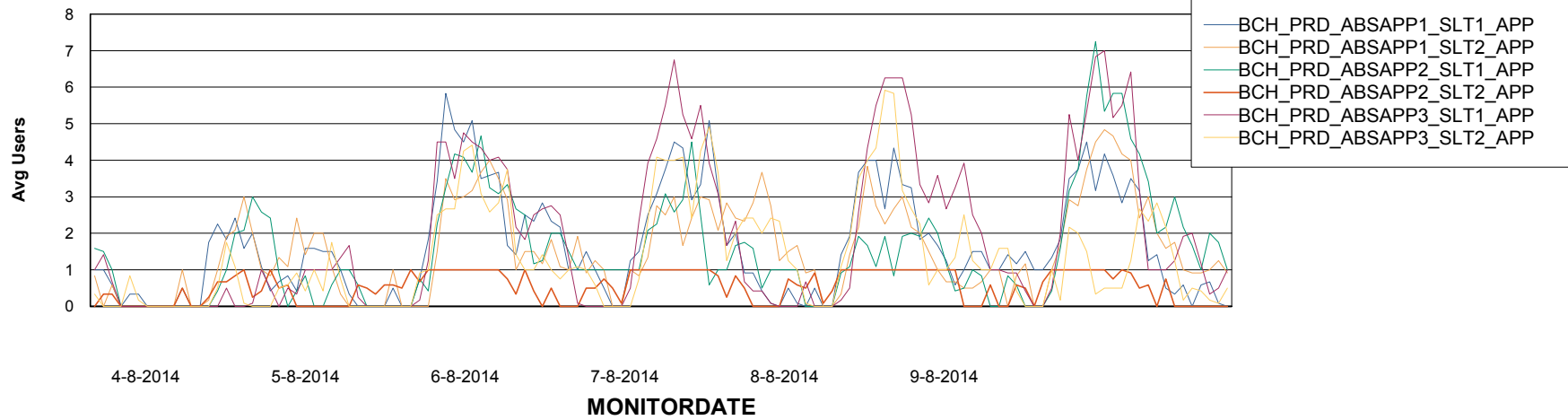
Weekly SLA Customer Report

Customer BCH Production
Database ID 28



=====
ABSolute Application Server Services
=====

Avg users per day per ABS server



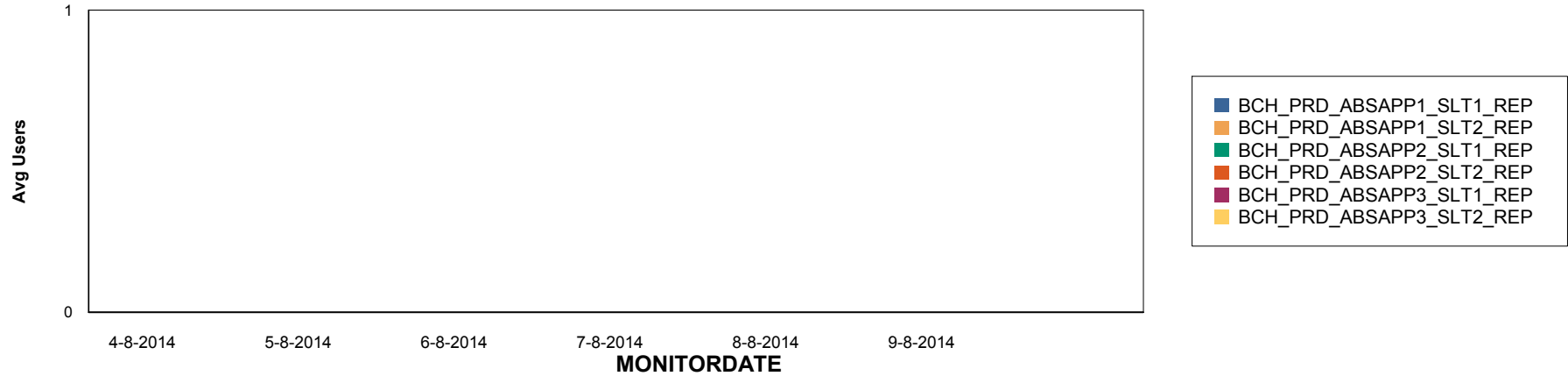
Weekly SLA Customer Report

Customer BCH Production
Database ID 28

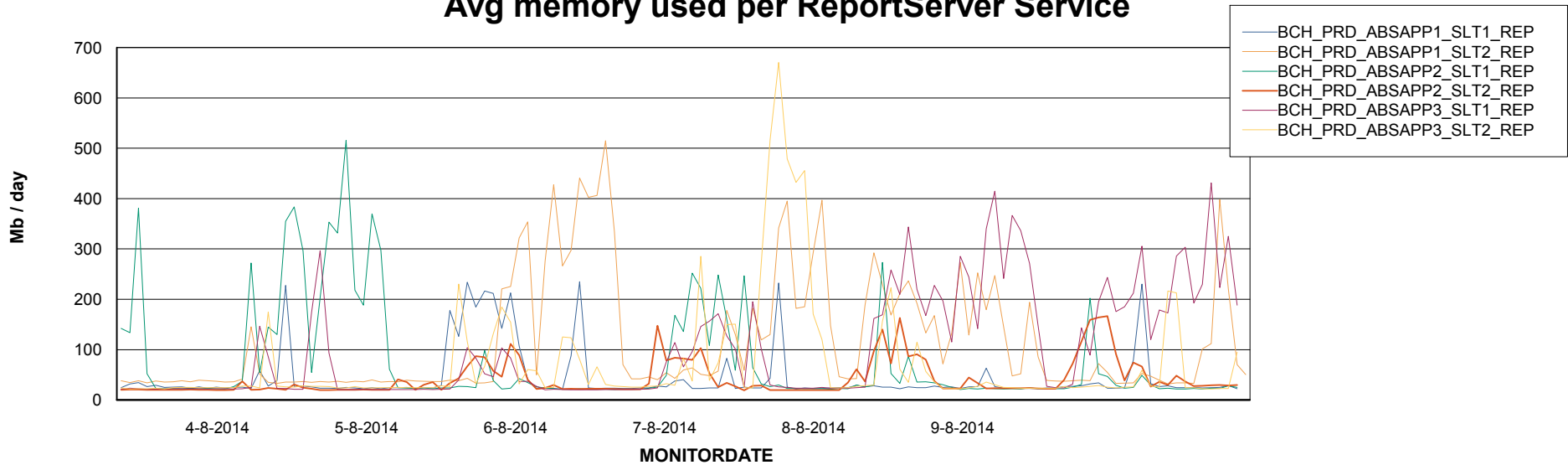


=====
ABSolute Application ReportServer Services
=====

Disaster per ReportServer



Avg memory used per ReportServer Service



Weekly SLA Customer Report

Customer BCH Production
Database ID 28



Disaster per ABS component

