

Weekly SLA Customer Report

Customer AUJ_Production
 Database ID 41



=====
 HARDDISK USAGE AUJDB_BI
 =====

	Used disk space on / (GB)	Total disk space on / (GB)
9-8-2014	5	6
8-8-2014	5	6
7-8-2014	5	6
6-8-2014	5	6
5-8-2014	5	6

=====
 HARDDISK USAGE AUJ_PRD_ORACLE1
 =====

	Used disk space on \$1 (GB)	Total disk space on \$1 (GB)	Free disk space on \$1 (GB)
9-8-2014	110	290	67
8-8-2014	111	290	67
7-8-2014	111	290	67
6-8-2014	111	290	67
5-8-2014	110	290	67

=====
 HARDDISK USAGE AUJ_PRD_ORACLE2
 =====

Weekly SLA Customer Report

Customer AUJ_Production
Database ID 41



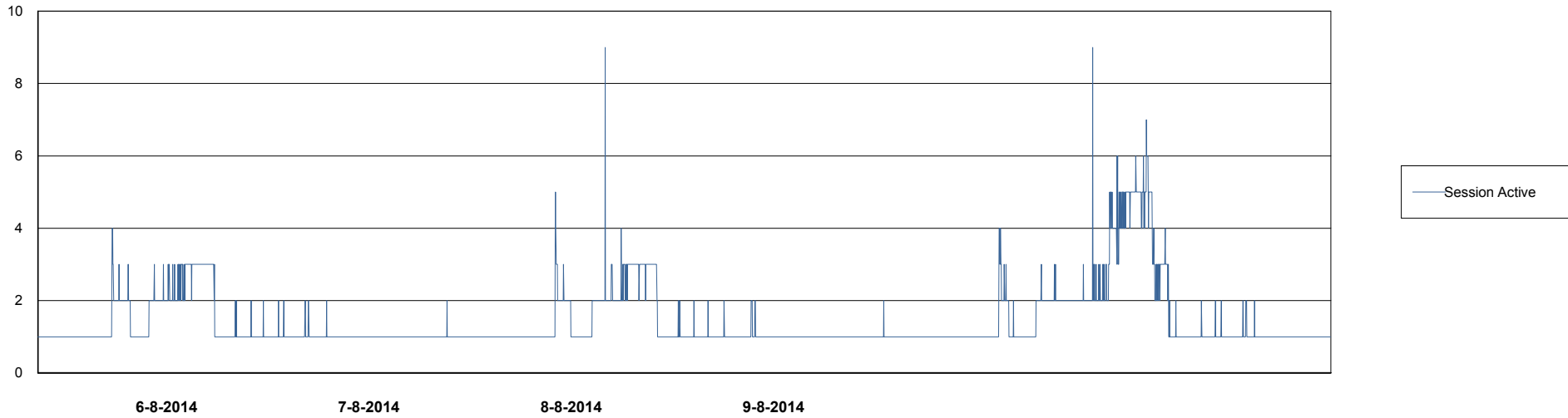
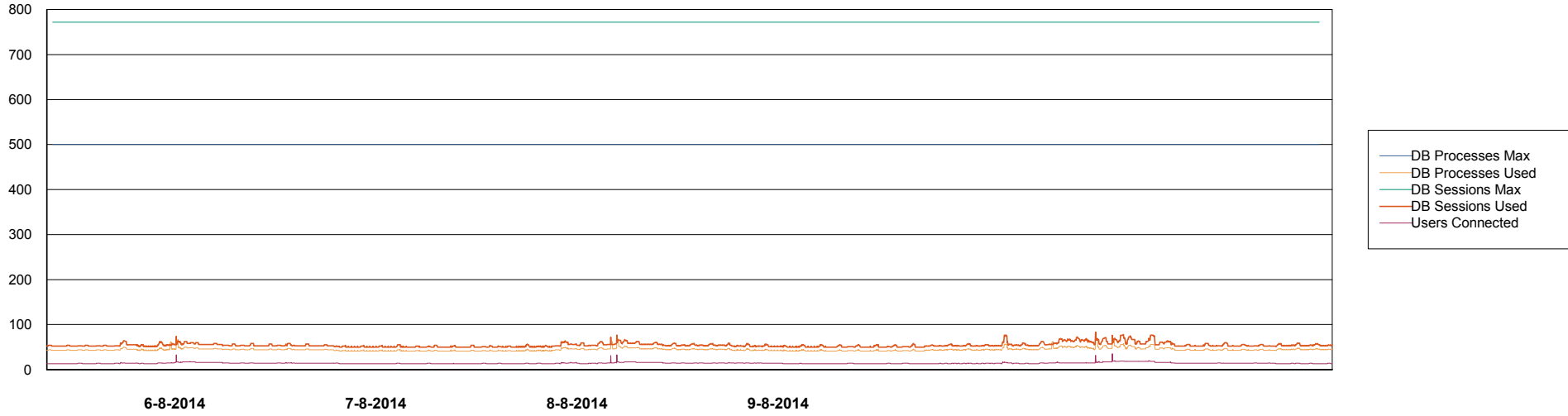
	Used disk space on \$1 (GB)	Total disk space on \$1 (GB)	Free disk space on \$1 (GB)
9-8-2014	6	109	98
8-8-2014	6	109	98
7-8-2014	6	109	98
6-8-2014	6	109	98
5-8-2014	6	109	98

Weekly SLA Customer Report

Customer AUJ_Production
Database ID 41



DATABASE PERFORMANCE AUJDB_BI



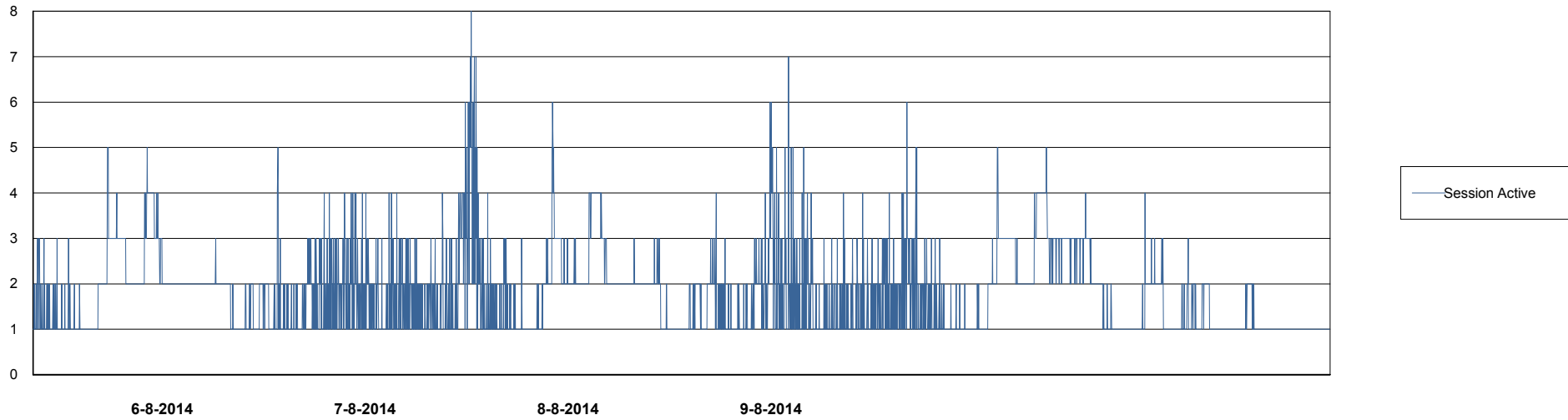
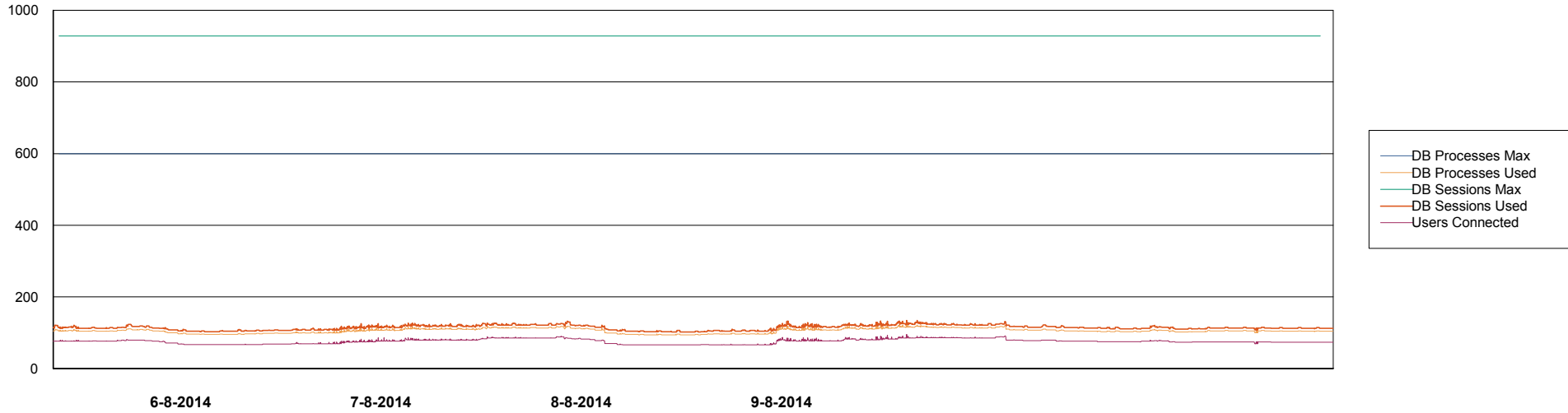
Weekly SLA Customer Report

Customer AUJ_Production
Database ID 41



DATABASE PERFORMANCE

AUJDB_Production

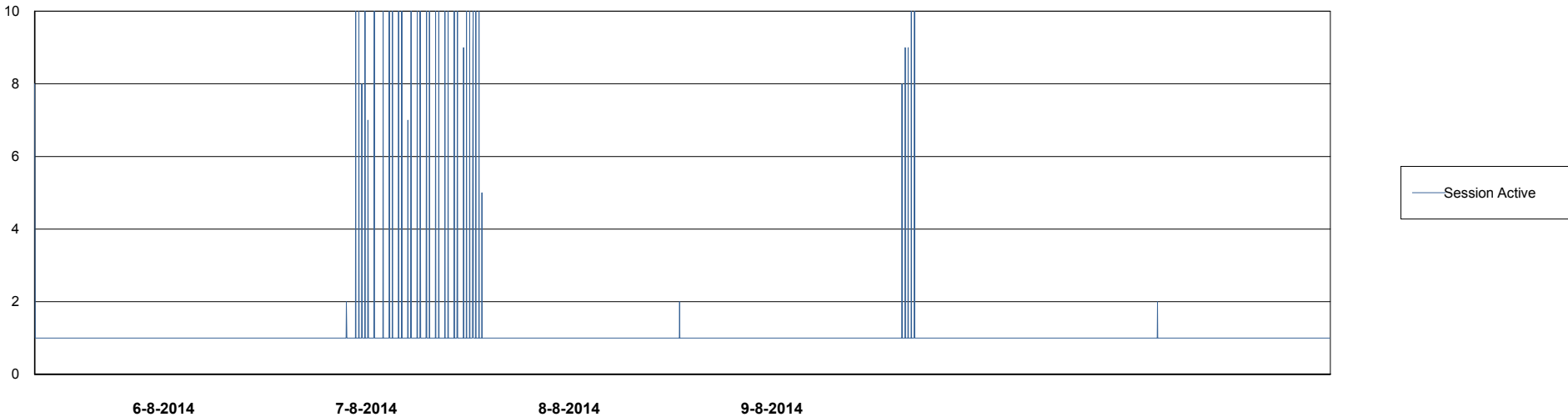
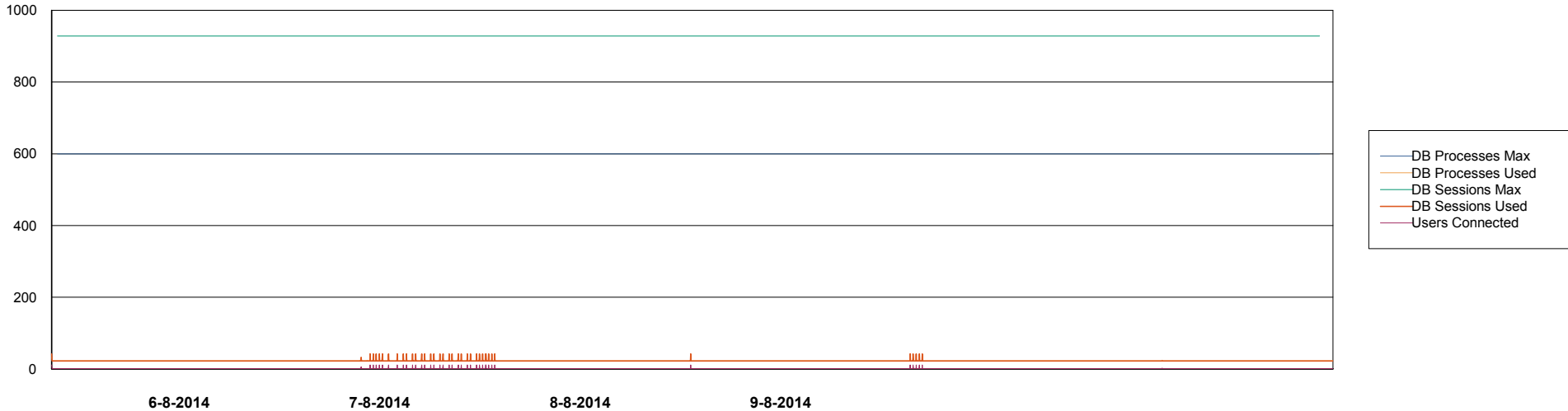


Weekly SLA Customer Report

Customer AUJ_Production
Database ID 41



=====
DATABASE PERFORMANCE AUJDB_Standby
=====

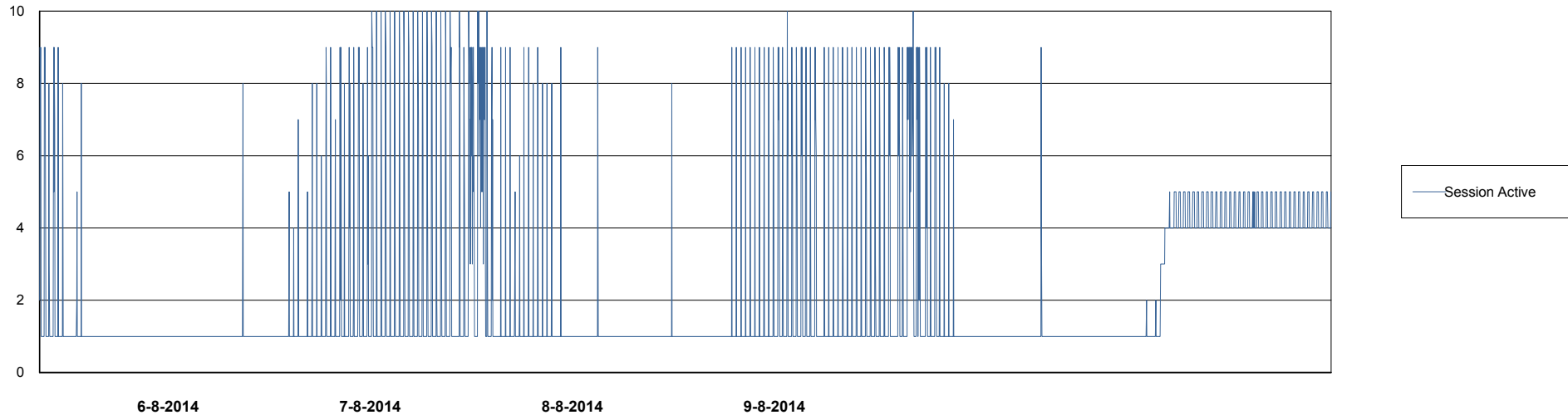
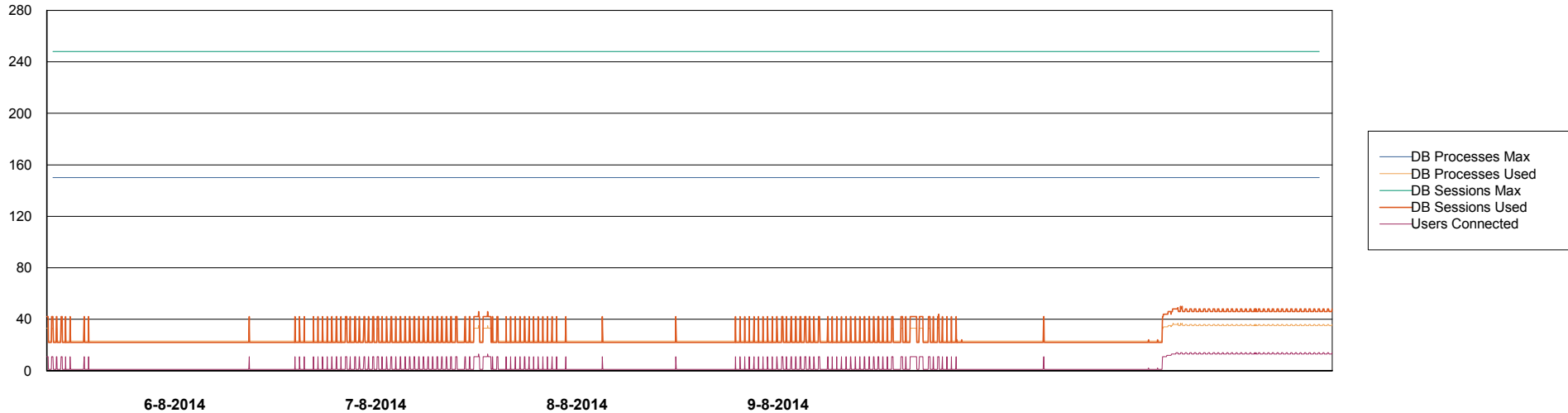


Weekly SLA Customer Report

Customer AUJ_Production
Database ID 41



DATABASE PERFORMANCE AUJDB3_Standby



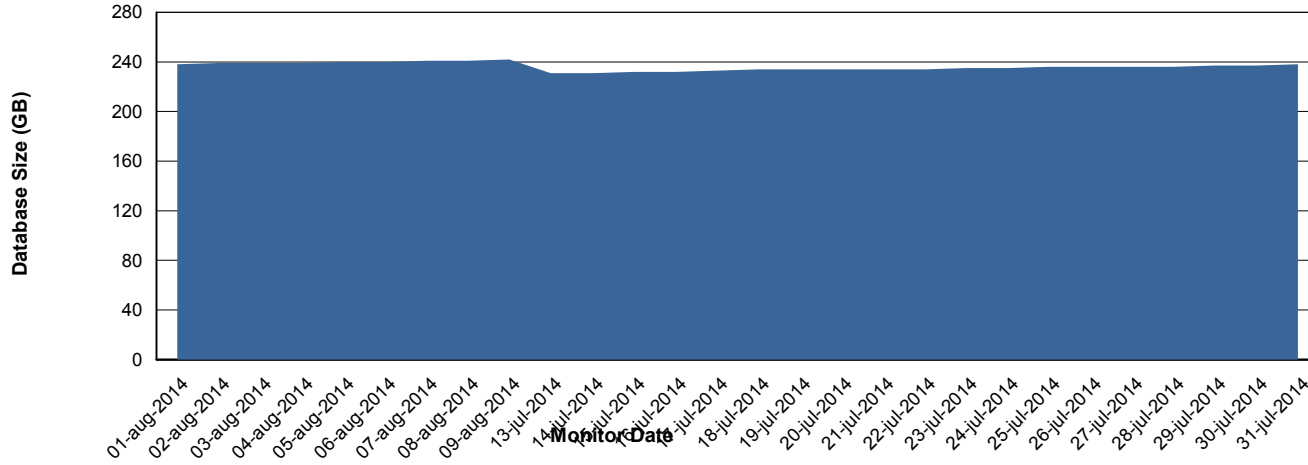
Weekly SLA Customer Report

Customer AUJ_Production
Database ID 41



=====
DATABASE SIZE AUJDB_Production
=====
=====
=====
=====
=====

Database growth over last month



Weekly SLA Customer Report

Customer AUJ_Production
 Database ID 41



=====
 DATABASE TABLESPACES AUJDB_BI
 =====

TOTAL DATABASE SIZE PER TABLESPACE

Date	Tablespace Name	Filesize (Gb)	Usedsize (Gb)	Percentage free
9-8-2014	ABSDATA	93	79	15
	INDX	154	132	14
8-8-2014	ABSDATA	93	79	15
	INDX	154	132	14
7-8-2014	ABSDATA	93	79	15
	INDX	154	131	15
6-8-2014	ABSDATA	93	78	16
	INDX	154	131	15
5-8-2014	ABSDATA	93	78	16
	INDX	154	131	15

Weekly SLA Customer Report

Customer AUJ_Production
 Database ID 41



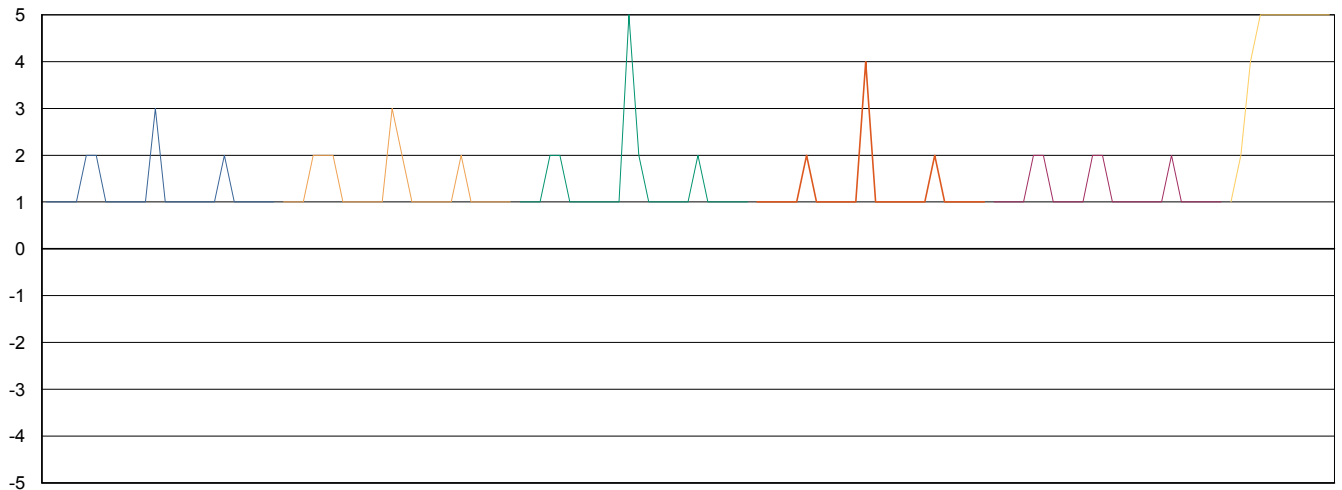
=====
 DATABASE TABLESPACES AUJDB_Production
 =====

TOTAL DATABASE SIZE PER TABLESPACE

Date	Tablespace Name	Filesize (Gb)	Usedsize (Gb)	Percentage free
9-8-2014	ABSDATA	129	106	18
	INDX	157	134	15
8-8-2014	ABSDATA	129	106	18
	INDX	157	134	15
7-8-2014	ABSDATA	129	105	19
	INDX	157	134	15
6-8-2014	ABSDATA	129	105	19
	INDX	157	134	15
5-8-2014	ABSDATA	129	105	19
	INDX	157	133	15

=====
 STANDBY DATABASE HEALTH AUJ_Production
 =====

Recovery lag for last 7 days



- 4-8-2014
- 5-8-2014
- 6-8-2014
- 7-8-2014
- 8-8-2014
- 9-8-2014