

Weekly SLA Customer Report

Customer NIX_Production
Database ID 51



=====
HARDDISK USAGE NIX_PRD_ABSAPP1
=====

	Total disk space on C (GB)	Free disk space on C (GB)
2-8-2014	136	88
1-8-2014	136	88
31-7-2014	136	88
30-7-2014	136	88
29-7-2014	136	88
28-7-2014	136	88
27-7-2014	136	89

=====
HARDDISK USAGE NIX_PRD_ABSWEB1
=====

	Total disk space on C (GB)	Free disk space on C (GB)
2-8-2014	930	729
1-8-2014	930	729
31-7-2014	930	729
30-7-2014	930	729
29-7-2014	930	729
28-7-2014	930	729
27-7-2014	930	729

Weekly SLA Customer Report

Customer NIX_Production
 Database ID 51



=====
 HARDDISK USAGE NIX_PRD_ORACLE_BI1
 =====

	Total disk space on C (GB)	Free disk space on C (GB)	Total disk space on D (GB)	Free disk space on D (GB)	Total disk space on E (GB)	Free disk space on E (GB)
2-8-2014	40	7	279	179	236	170
1-8-2014	40	7	279	173	236	163
31-7-2014	40	7	279	173	236	164
30-7-2014	40	7	279	176	236	162
29-7-2014	40	7	279	177	236	164
28-7-2014	40	7	279	179	236	171
27-7-2014	40	7	279	177	236	163

=====
 HARDDISK USAGE NIX_PRD_ORCDB1
 =====

	Total disk space on C (GB)	Free disk space on C (GB)	Total disk space on D (GB)	Free disk space on D (GB)	Total disk space on E (GB)	Free disk space on E (GB)
2-8-2014	136	21	136	36	136	102
1-8-2014	136	21	136	36	136	104
31-7-2014	136	21	136	36	136	104
30-7-2014	136	21	136	36	136	104
29-7-2014	136	21	136	36	136	104
28-7-2014	136	21	136	36	136	104
27-7-2014	136	21	136	36	136	103

Weekly SLA Customer Report

Customer NIX_Production
Database ID 51



HARDDISK USAGE NIX_PRD_ORCDB2

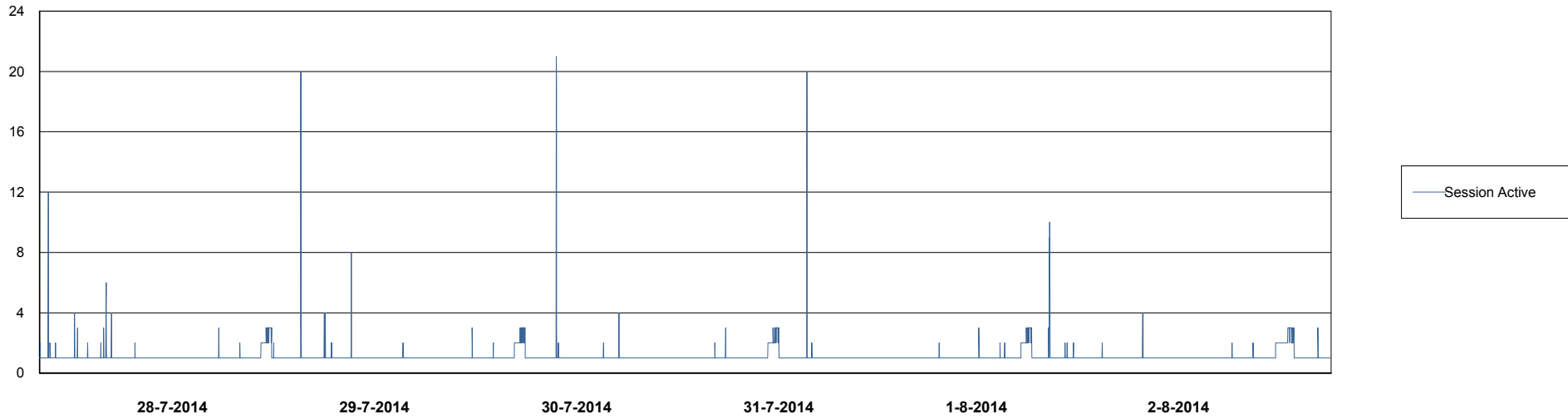
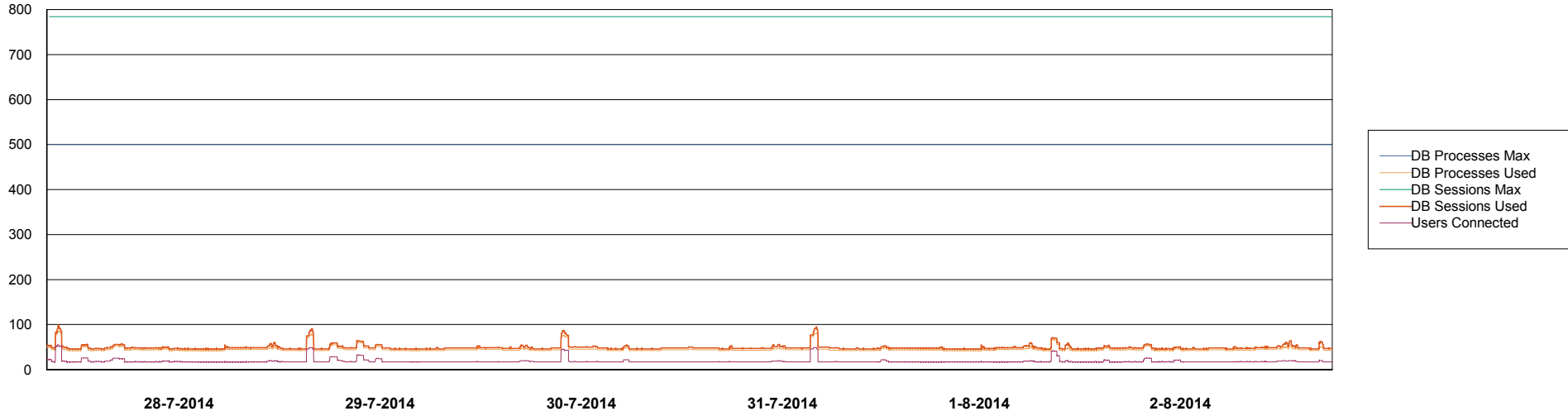
	Total disk space on C (GB)	Free disk space on C (GB)	Total disk space on D (GB)	Free disk space on D (GB)	Total disk space on E (GB)	Free disk space on E (GB)
2-8-2014	279	49	279	49	279	135
1-8-2014	279	49	279	49	279	169
31-7-2014	279	49	279	49	279	182
30-7-2014	279	49	279	49	279	180
29-7-2014	279	49	279	49	279	150
28-7-2014	279	49	279	49	279	95
27-7-2014	279	49	279	49	279	91

Weekly SLA Customer Report

Customer NIX_Production
Database ID 51



DATABASE PERFORMANCE NIXDB_BI

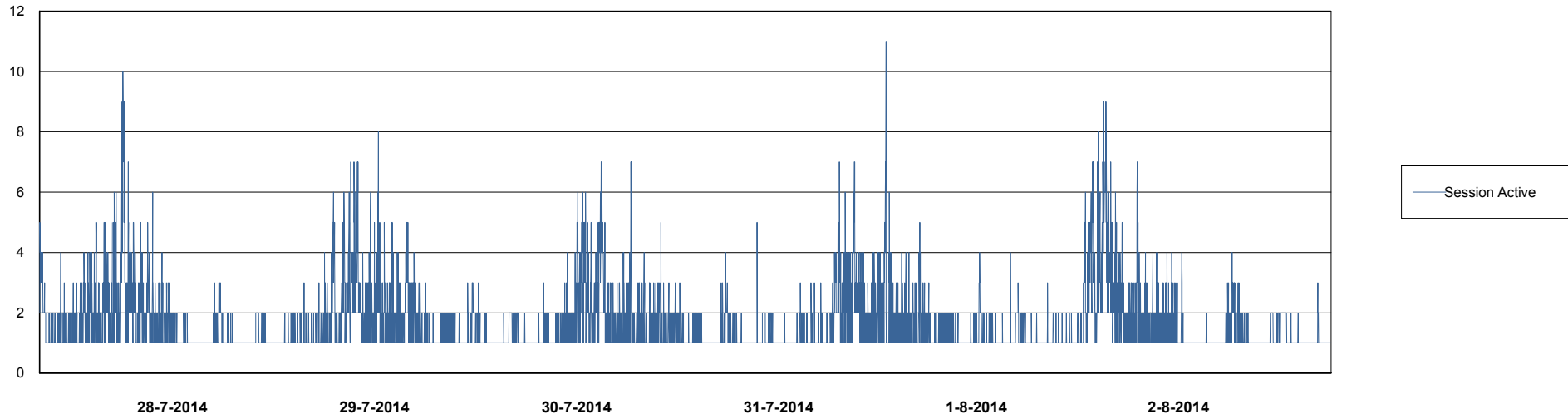
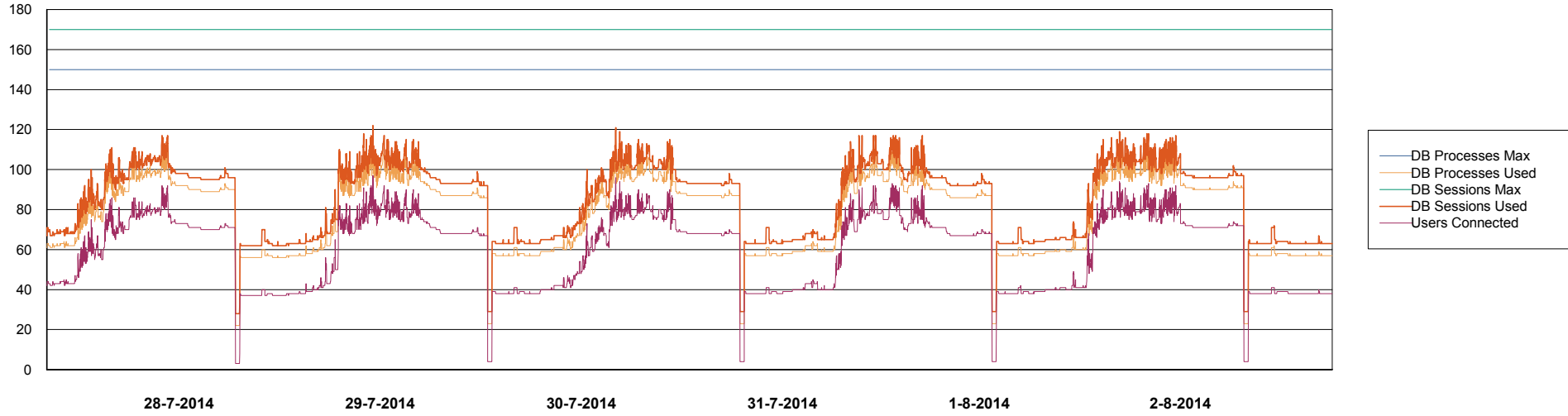


Weekly SLA Customer Report

Customer NIX_Production
Database ID 51



DATABASE PERFORMANCE NIXDB_Production

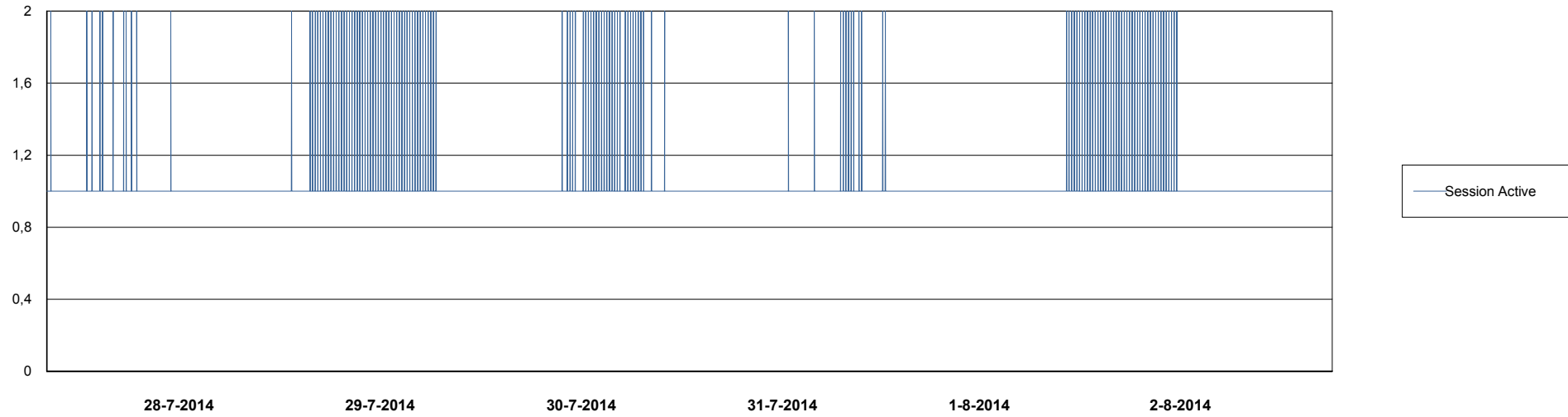
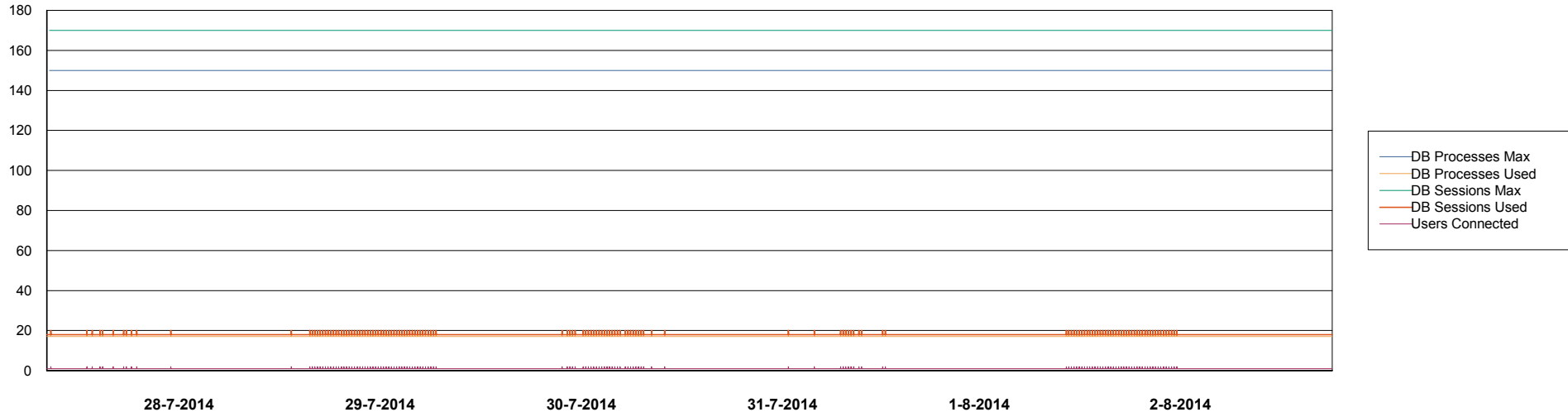


Weekly SLA Customer Report

Customer NIX_Production
Database ID 51



DATABASE PERFORMANCE NIXDB_Standby



Weekly SLA Customer Report

Customer NIX_Production
Database ID 51



=====
DATABASE TABLESPACES NIXDB_BI
=====

TOTAL DATABASE SIZE PER TABLESPACE

Date	Tablespace Name	Filesize (Gb)	Usedsize (Gb)	Percentage free
2-8-2014	ABSDATA	20	16	20
	INDX	40	25	38
1-8-2014	ABSDATA	20	16	20
	INDX	40	25	38
31-7-2014	ABSDATA	20	16	20
	INDX	40	25	38
30-7-2014	ABSDATA	20	16	20
	INDX	40	25	38
29-7-2014	ABSDATA	20	16	20
	INDX	40	25	38
28-7-2014	ABSDATA	20	16	20
	INDX	40	25	38
27-7-2014	ABSDATA	20	16	20
	INDX	40	25	38

Weekly SLA Customer Report

Customer NIX_Production
 Database ID 51



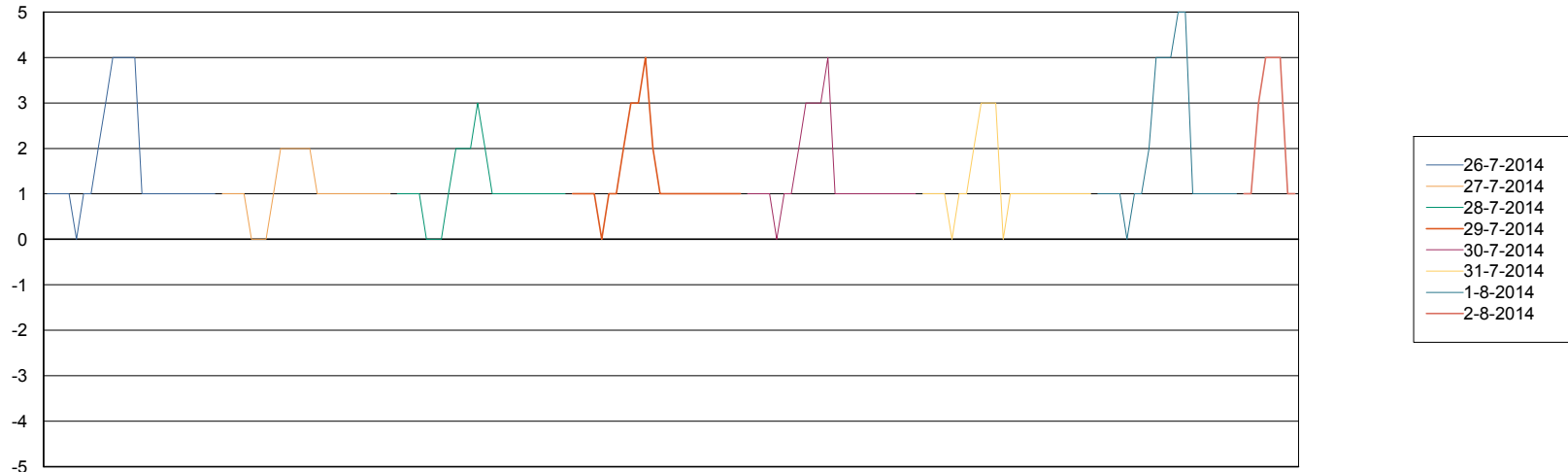
=====
 DATABASE TABLESPACES NIXDB_Production
 =====

TOTAL DATABASE SIZE PER TABLESPACE

Date	Tablespace Name	Filesize (Gb)	Usedsize (Gb)	Percentage free
2-8-2014	ABSDATA	40	27	33
	INDX	97	71	27
1-8-2014	ABSDATA	40	27	33
	INDX	97	71	27
31-7-2014	ABSDATA	40	27	33
	INDX	97	71	27
30-7-2014	ABSDATA	40	26	35
	INDX	97	71	27
29-7-2014	ABSDATA	40	26	35
	INDX	97	71	27
28-7-2014	ABSDATA	40	26	35
	INDX	97	71	27
27-7-2014	ABSDATA	40	26	35
	INDX	97	71	27

=====
 STANDBY DATABASE HEALTH NIX_Production
 =====

Recovery lag for last 7 days



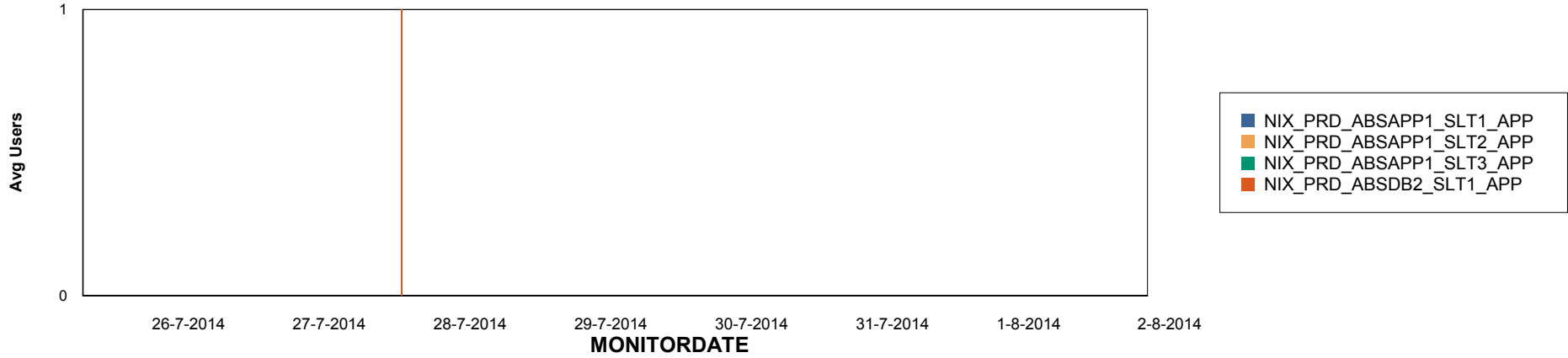
Weekly SLA Customer Report

Customer NIX_Production
Database ID 51

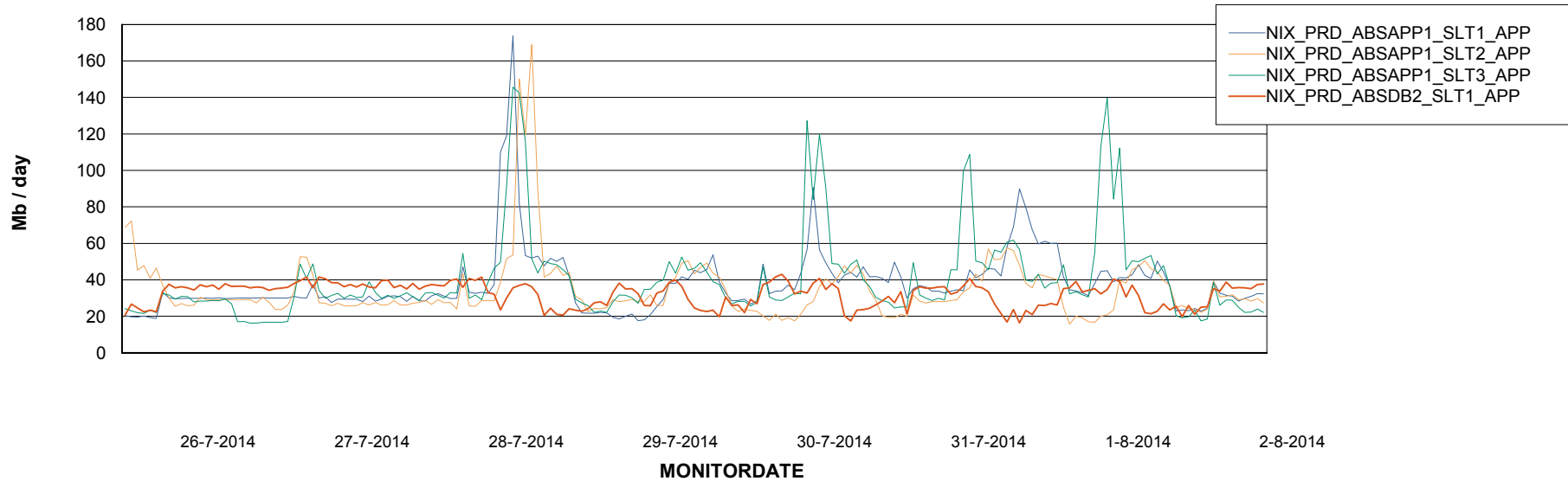


ABSolute Application Server Services

Disaster per ABS Server



Avg memory used per ABS Server Service



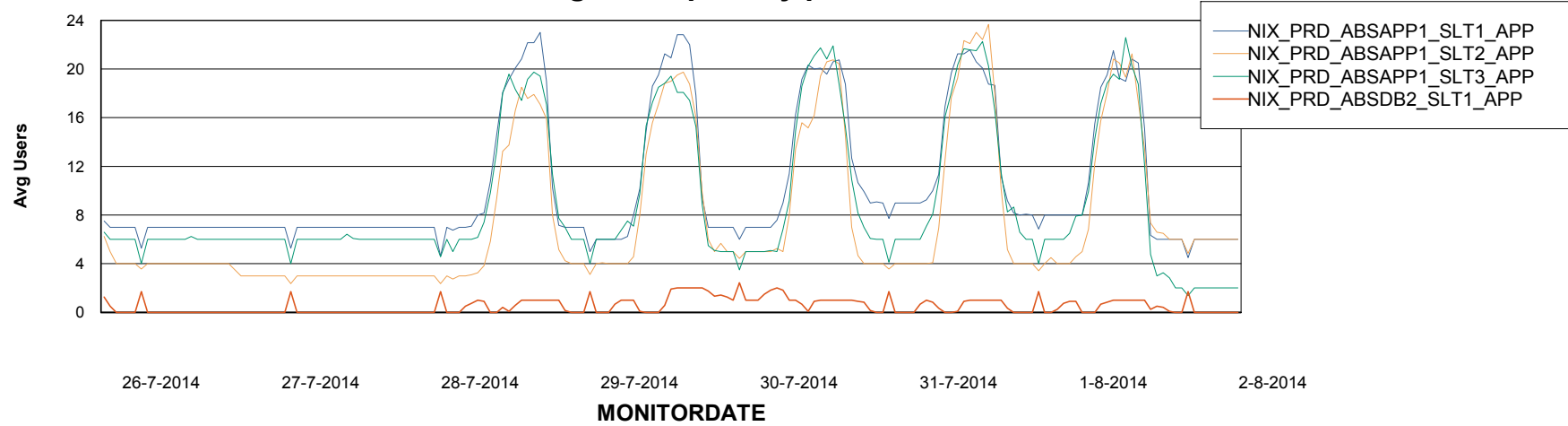
Weekly SLA Customer Report

Customer NIX_Production
Database ID 51



=====
ABSolute Application Server Services
=====

Avg users per day per ABS server



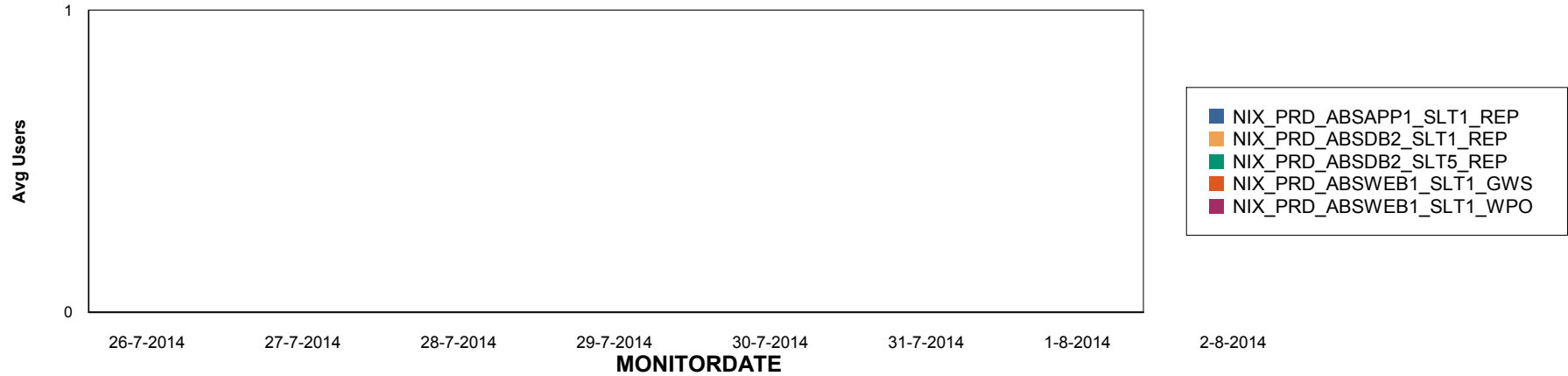
Weekly SLA Customer Report

Customer NIX_Production
Database ID 51

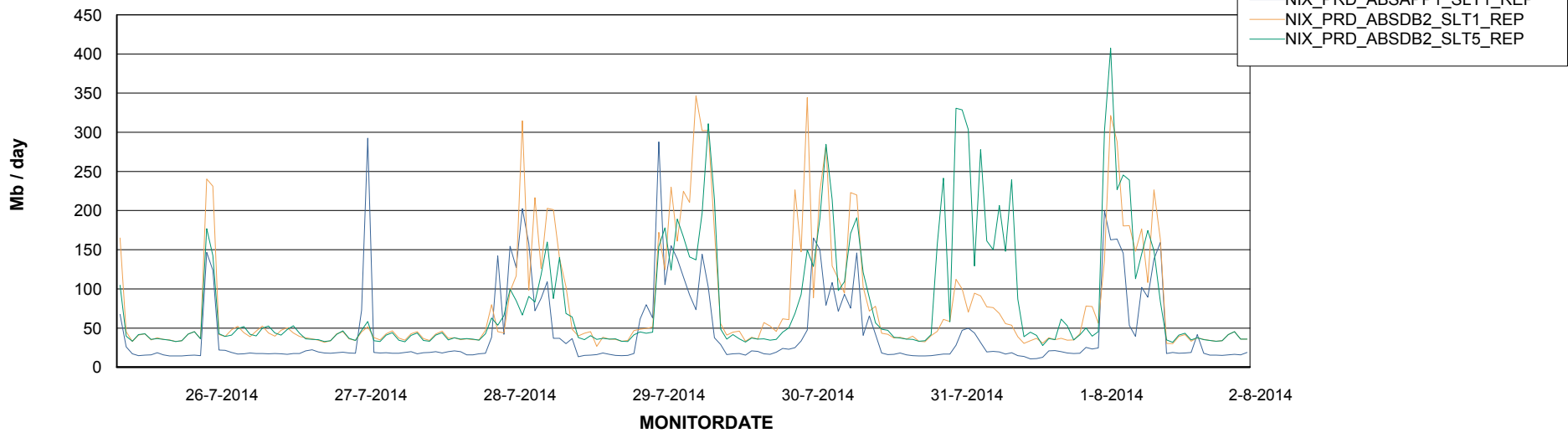


=====
ABSolute Application ReportServer Services
=====

Disaster per ReportServer



Avg memory used per ReportServer Service



Weekly SLA Customer Report

Customer NIX_Production
Database ID 51



Disaster per ABS component

