

Weekly SLA Customer Report

Customer BCH Production
 Database ID 28



=====
 HARDDISK USAGE BCH_PRD_ABSAPP1
 =====

	Total disk space on C (GB)	Free disk space on C (GB)	Total disk space on D (GB)	Free disk space on D (GB)
26-7-2014	45	10	30	30
25-7-2014	45	10	30	30
24-7-2014	45	10	30	30
23-7-2014	45	10	30	30
22-7-2014	45	10	30	30
21-7-2014	45	10	30	30
20-7-2014	45	11	30	30

=====
 HARDDISK USAGE BCH_PRD_ABSAPP2
 =====

	Total disk space on C (GB)	Free disk space on C (GB)	Total disk space on D (GB)	Free disk space on D (GB)
26-7-2014	45	10	30	30
25-7-2014	45	8	30	30
24-7-2014	45	7	30	30
23-7-2014	45	7	30	30
22-7-2014	45	7	30	30
21-7-2014	45	7	30	30
20-7-2014	45	7	30	30

Weekly SLA Customer Report

Customer BCH Production
 Database ID 28



=====
 HARDDISK USAGE BCH_PRD_ABSAPP3
 =====

	Total disk space on C (GB)	Free disk space on C (GB)	Total disk space on D (GB)	Free disk space on D (GB)
26-7-2014	45	13	30	30
25-7-2014	45	13	30	30
24-7-2014	45	13	30	30
23-7-2014	45	13	30	30
22-7-2014	45	13	30	30
21-7-2014	45	13	30	30
20-7-2014	45	13	30	30

=====
 HARDDISK USAGE BCH_PRD_ABSWEB1
 =====

	Used disk space on C (GB)	Total disk space on C (GB)	Free disk space on C (GB)
26-7-2014	29	45	15
25-7-2014	29	45	15
24-7-2014	29	45	15
23-7-2014	29	45	15
22-7-2014	29	45	16
21-7-2014	29	45	16
20-7-2014	29	45	16

Weekly SLA Customer Report

Customer BCH Production
 Database ID 28



=====
 HARDDISK USAGE BCH_PRD_ABSWEB2
 =====

	Used disk space on C (GB)	Total disk space on C (GB)	Free disk space on C (GB)
26-7-2014	28	45	17
25-7-2014	28	45	17
24-7-2014	28	45	17
23-7-2014	28	45	17
22-7-2014	28	45	17
21-7-2014	28	45	17
20-7-2014	28	45	17

=====
 HARDDISK USAGE BCH_PRD_ORCDB1
 =====

	Total disk space on C (GB)	Free disk space on C (GB)	Total disk space on D (GB)	Free disk space on D (GB)
26-7-2014	278	163	278	41
25-7-2014	278	163	278	43
24-7-2014	278	163	278	46
23-7-2014	278	163	278	49
22-7-2014	278	163	278	52
21-7-2014	278	163	278	55
20-7-2014	278	163	278	57

Weekly SLA Customer Report

Customer BCH Production
 Database ID 28



=====
 HARDDISK USAGE BCH_PRD_ORCDB2
 =====

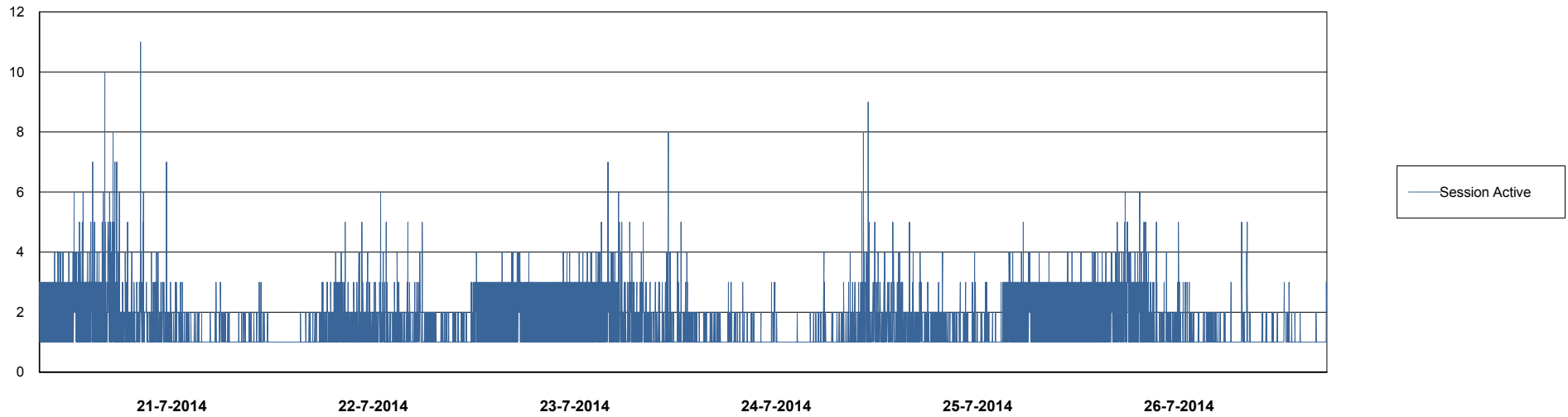
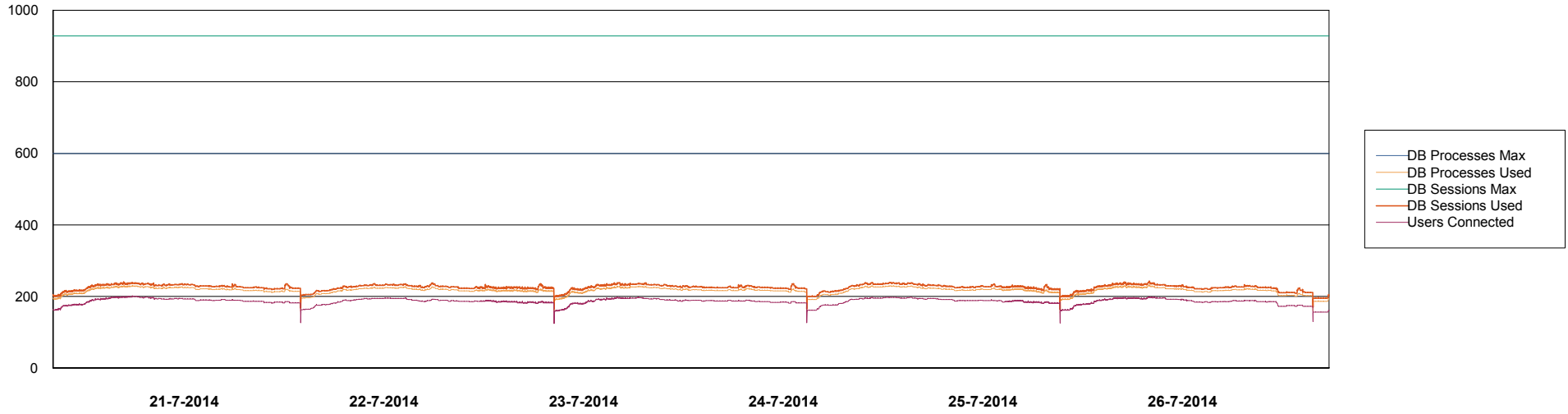
	Total disk space on C (GB)	Free disk space on C (GB)	Total disk space on D (GB)	Free disk space on D (GB)
26-7-2014	278	197	278	86
25-7-2014	278	197	278	64
24-7-2014	278	197	278	43
23-7-2014	278	197	278	46
22-7-2014	278	197	278	50
21-7-2014	278	197	278	52
20-7-2014	278	197	278	54

Weekly SLA Customer Report

Customer BCH Production
Database ID 28



DATABASE PERFORMANCE BCHDB_Production

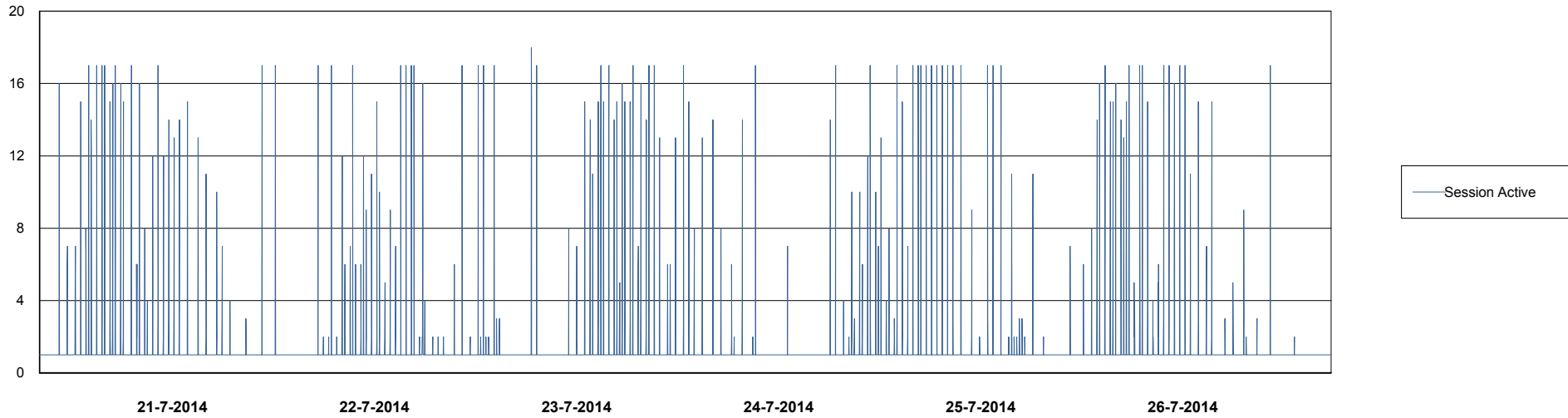
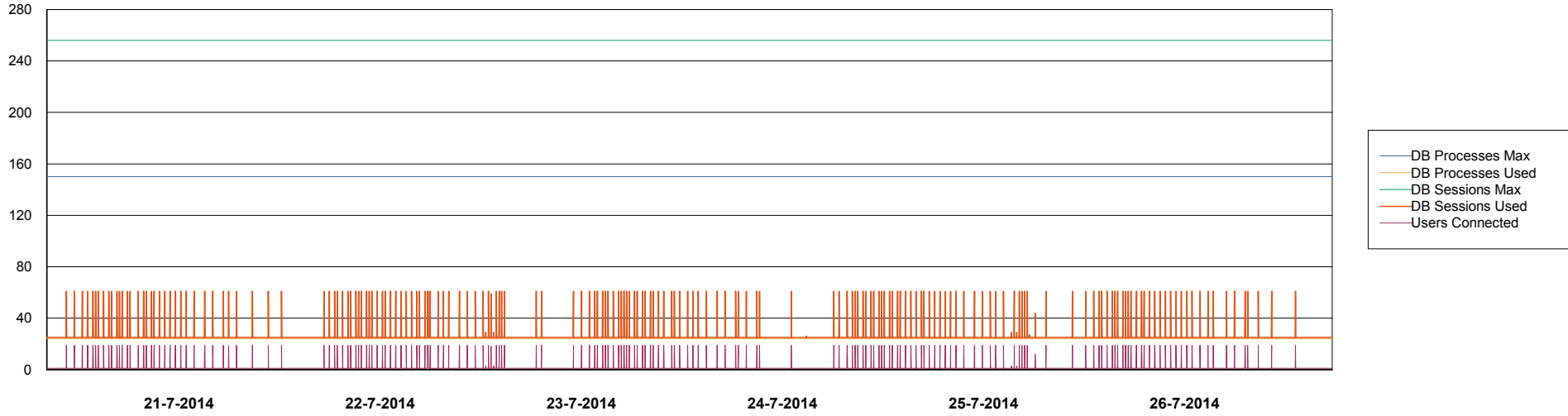


Weekly SLA Customer Report

Customer BCH Production
Database ID 28



=====
DATABASE PERFORMANCE BCHDB_Standby
=====



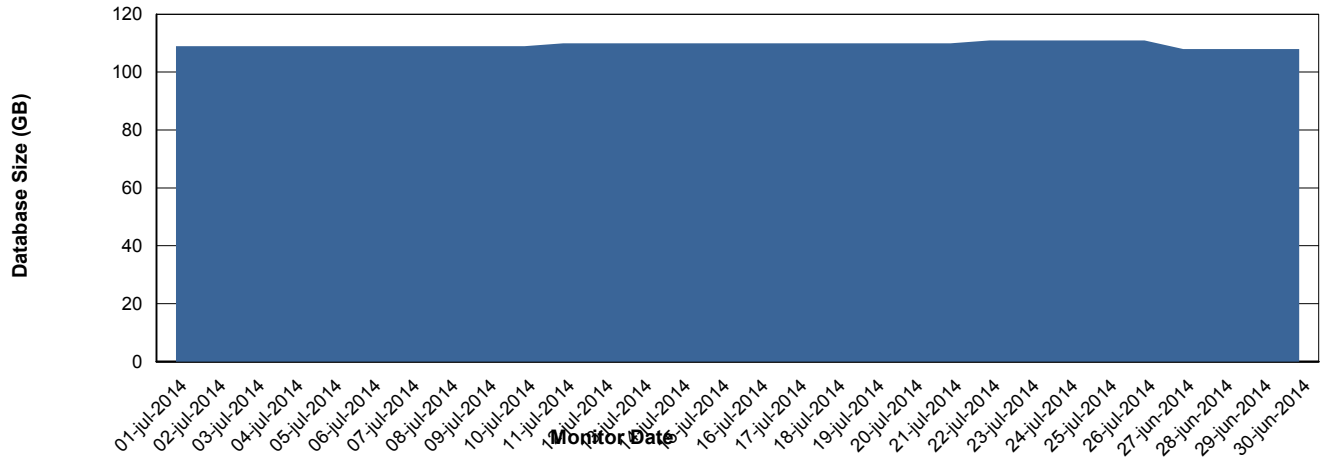
Weekly SLA Customer Report

Customer BCH Production
 Database ID 28



=====
 DATABASE SIZE BCHDB_Production
 =====

Database growth over last month



=====
 DATABASE TABLESPACES BCHDB_Production
 =====

TOTAL DATABASE SIZE PER TABLESPACE

Date	Tablespace Name	Filesize (Gb)	Usedsize (Gb)	Percentage free
26-7-2014	ABSDATA	26	0	100
	INDX	101	87	14
25-7-2014	ABSDATA	26	0	100
	INDX	101	87	14
24-7-2014	ABSDATA	26	0	100
	INDX	101	86	15
23-7-2014	ABSDATA	26	0	100
	INDX	101	85	16
22-7-2014	ABSDATA	26	0	100
	INDX	101	84	17
21-7-2014	ABSDATA	26	0	100
	INDX	101	84	17
20-7-2014	ABSDATA	26	0	100
	INDX	101	84	17

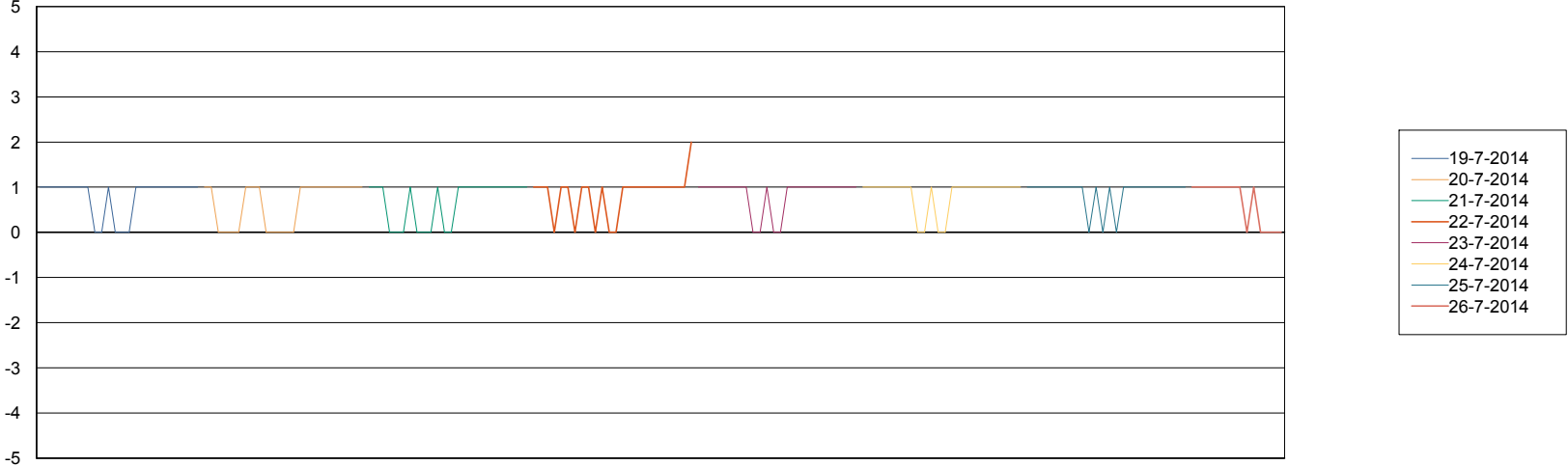
Weekly SLA Customer Report

Customer BCH Production
Database ID 28



=====
STANDBY DATABASE HEALTH BCH Production
=====

Recovery lag for last 7 days



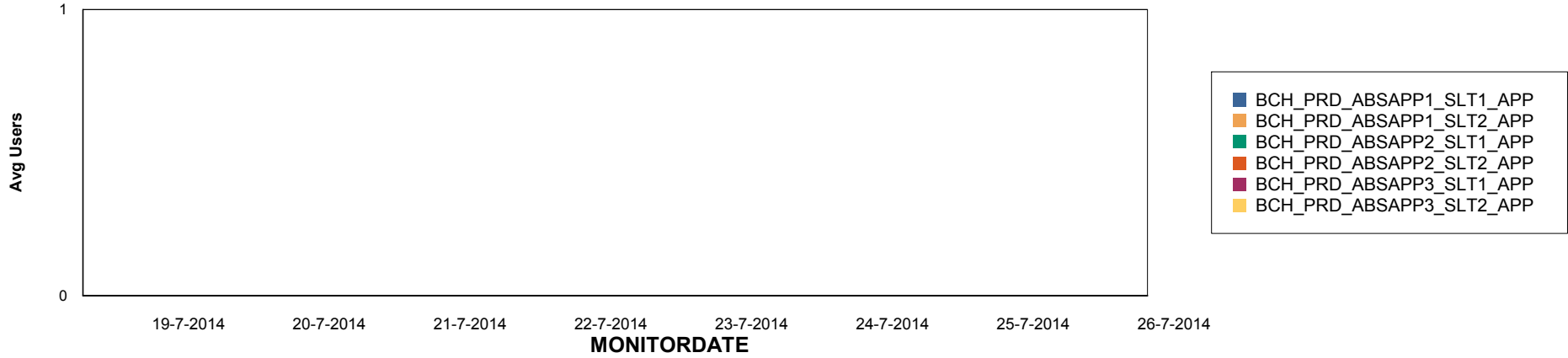
Weekly SLA Customer Report

Customer BCH Production
Database ID 28

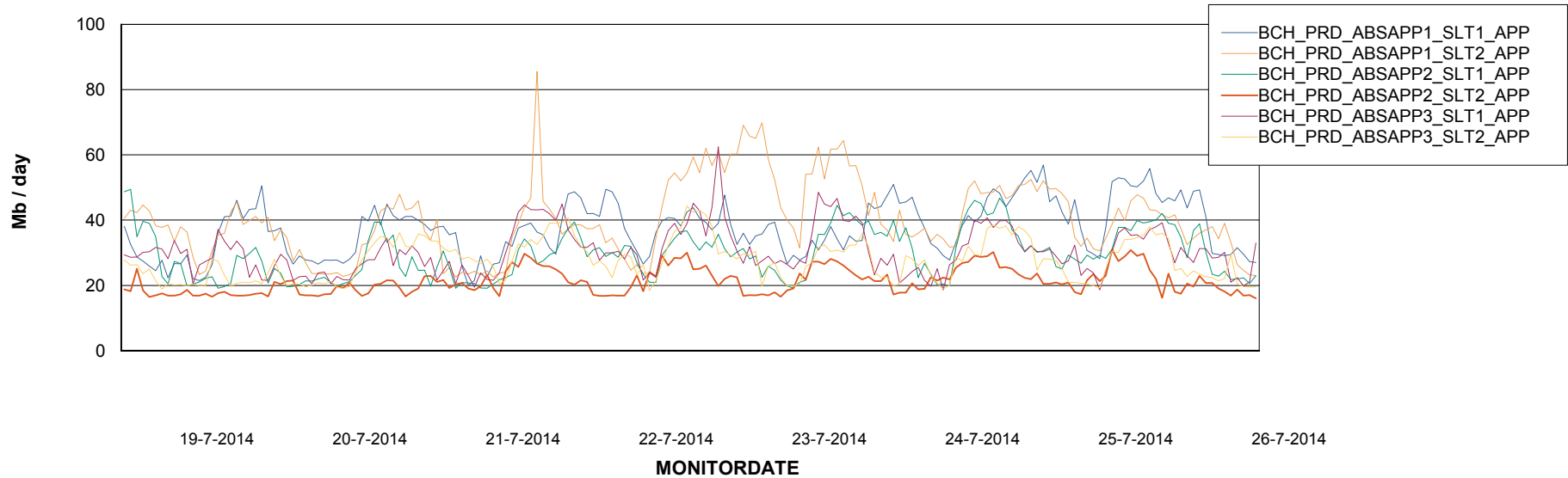


ABSolute Application Server Services

Disaster per ABS Server



Avg memory used per ABS Server Service



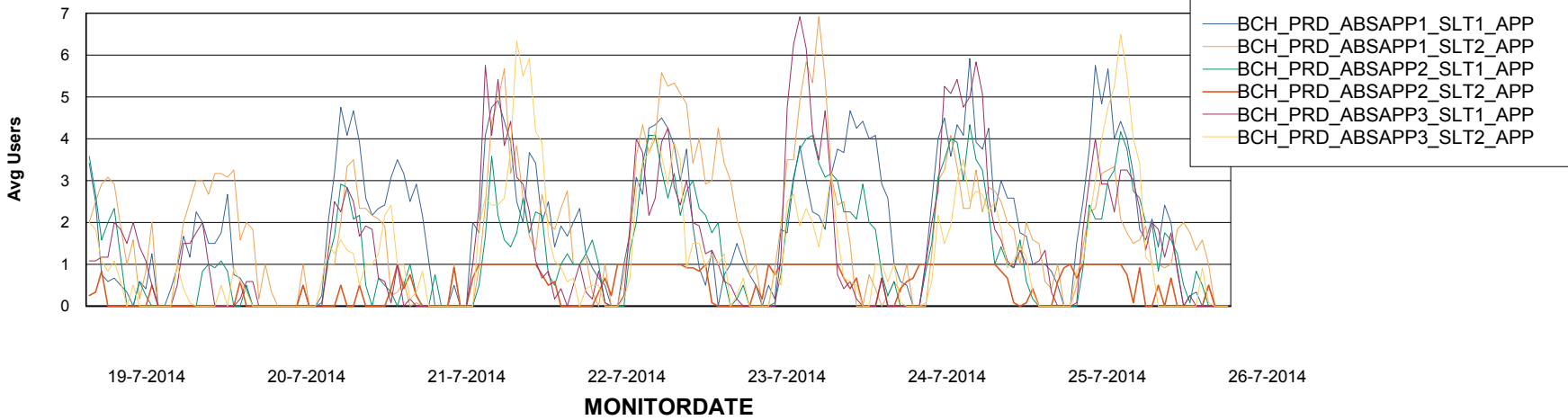
Weekly SLA Customer Report

Customer BCH Production
Database ID 28



=====
ABSolute Application Server Services
=====

Avg users per day per ABS server



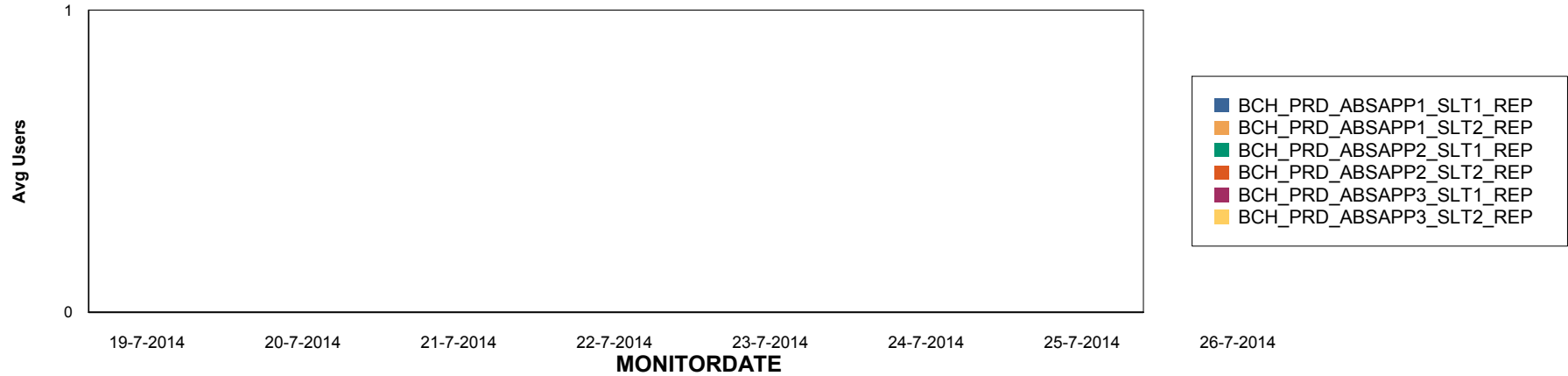
Weekly SLA Customer Report

Customer BCH Production
Database ID 28

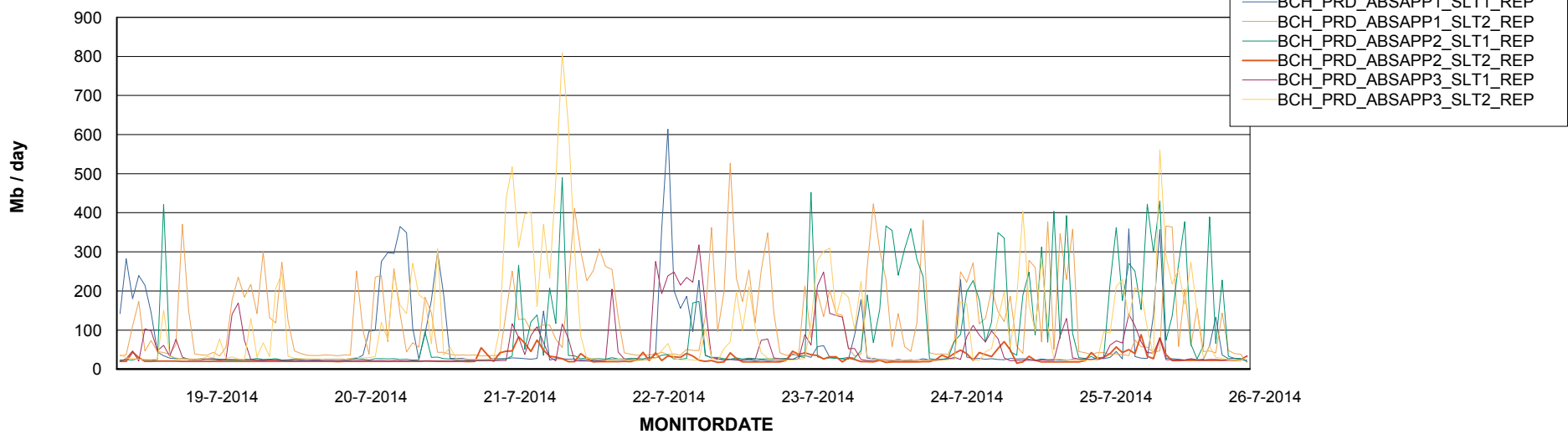


=====
ABSolute Application ReportServer Services
=====

Disaster per ReportServer



Avg memory used per ReportServer Service



Weekly SLA Customer Report

Customer BCH Production
Database ID 28



Disaster per ABS component

