

Weekly SLA Customer Report

Customer BCH Production
 Database ID 28



=====
 HARDDISK USAGE BCH_PRD_ABSAPP1
 =====

	Total disk space on C (GB)	Free disk space on C (GB)	Total disk space on D (GB)	Free disk space on D (GB)
19-7-2014	45	11	30	30
18-7-2014	45	11	30	30
17-7-2014	45	11	30	30
16-7-2014	45	11	30	30
15-7-2014	45	11	30	30
14-7-2014	45	11	30	30
13-7-2014	45	11	30	30

=====
 HARDDISK USAGE BCH_PRD_ABSAPP2
 =====

	Total disk space on C (GB)	Free disk space on C (GB)	Total disk space on D (GB)	Free disk space on D (GB)
19-7-2014	45	7	30	30
18-7-2014	45	7	30	30
17-7-2014	45	7	30	30
16-7-2014	45	7	30	30
15-7-2014	45	7	30	30
14-7-2014	45	7	30	30
13-7-2014	45	7	30	30

Weekly SLA Customer Report

Customer BCH Production
 Database ID 28



=====
 HARDDISK USAGE BCH_PRD_ABSAPP3
 =====

	Total disk space on C (GB)	Free disk space on C (GB)	Total disk space on D (GB)	Free disk space on D (GB)
19-7-2014	45	13	30	30
18-7-2014	45	13	30	30
17-7-2014	45	13	30	30
16-7-2014	45	13	30	30
15-7-2014	45	13	30	30
14-7-2014	45	13	30	30
13-7-2014	45	13	30	30

=====
 HARDDISK USAGE BCH_PRD_ABSWEB1
 =====

	Used disk space on C (GB)	Total disk space on C (GB)	Free disk space on C (GB)
19-7-2014	29	45	16
18-7-2014	29	45	16
17-7-2014	29	45	16
16-7-2014	29	45	16
15-7-2014	29	45	16
14-7-2014	29	45	16
13-7-2014	29	45	16

Weekly SLA Customer Report

Customer BCH Production
 Database ID 28



=====
 HARDDISK USAGE BCH_PRD_ABSWEB2
 =====

	Used disk space on C (GB)	Total disk space on C (GB)	Free disk space on C (GB)
19-7-2014	28	45	17
18-7-2014	28	45	17
17-7-2014	28	45	17
16-7-2014	28	45	17
15-7-2014	28	45	17
14-7-2014	28	45	17
13-7-2014	28	45	17

=====
 HARDDISK USAGE BCH_PRD_ORCDB1
 =====

	Total disk space on C (GB)	Free disk space on C (GB)	Total disk space on D (GB)	Free disk space on D (GB)
19-7-2014	278	162	278	59
18-7-2014	278	163	278	61
17-7-2014	278	163	278	64
16-7-2014	278	163	278	67
15-7-2014	278	163	278	69
14-7-2014	278	163	278	72
13-7-2014	278	163	278	74

Weekly SLA Customer Report

Customer BCH Production
Database ID 28



HARDDISK USAGE BCH_PRD_ORCDB2

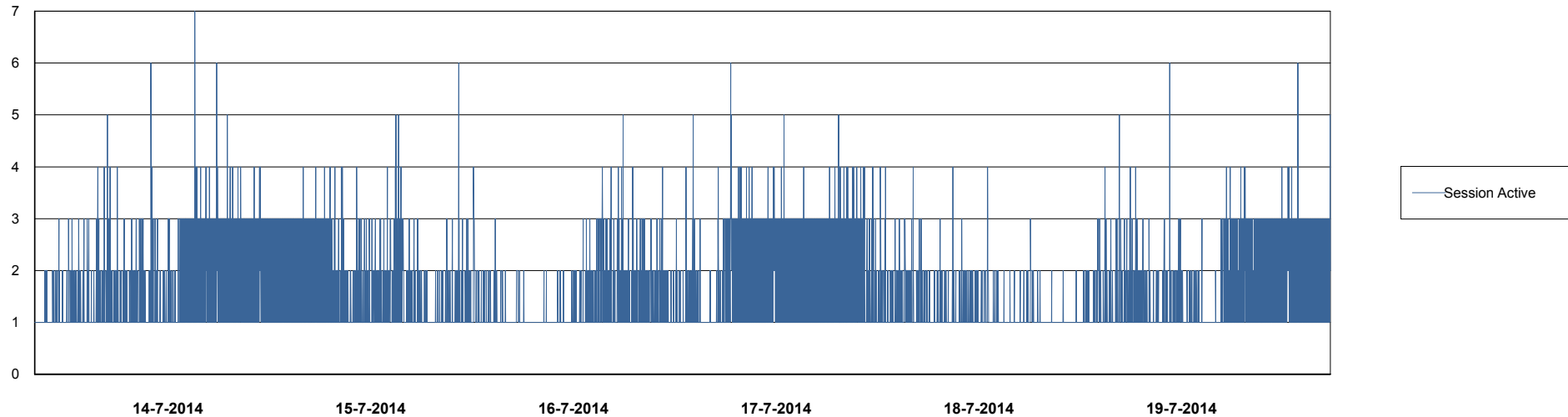
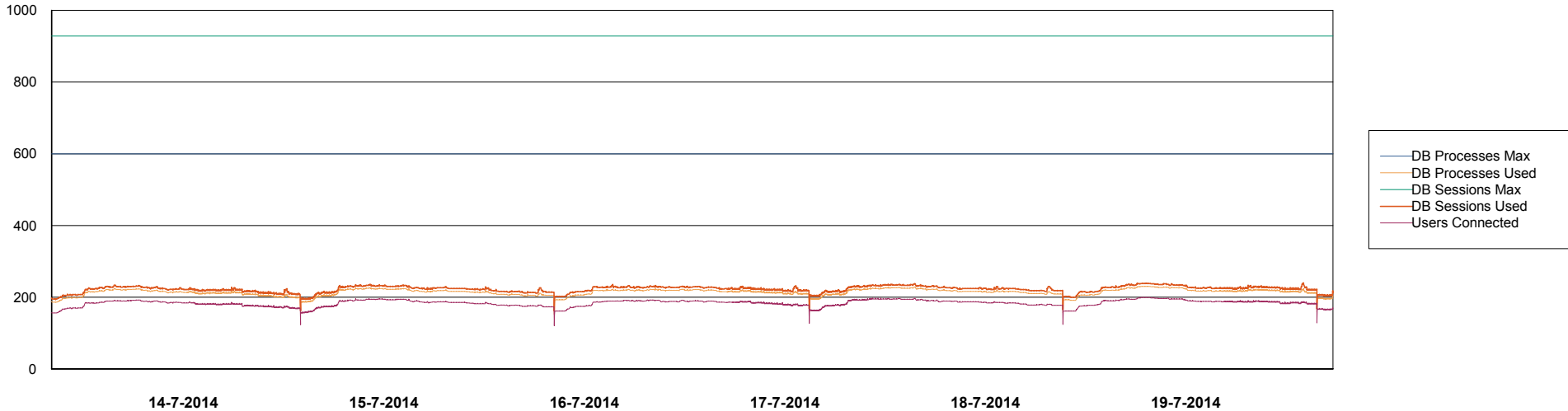
	Total disk space on C (GB)	Free disk space on C (GB)	Total disk space on D (GB)	Free disk space on D (GB)
19-7-2014	278	197	278	56
18-7-2014	278	197	278	58
17-7-2014	278	197	278	61
16-7-2014	278	197	278	64
15-7-2014	278	197	278	66
14-7-2014	278	197	278	69
13-7-2014	278	198	278	71

Weekly SLA Customer Report

Customer BCH Production
Database ID 28



DATABASE PERFORMANCE BCHDB_Production

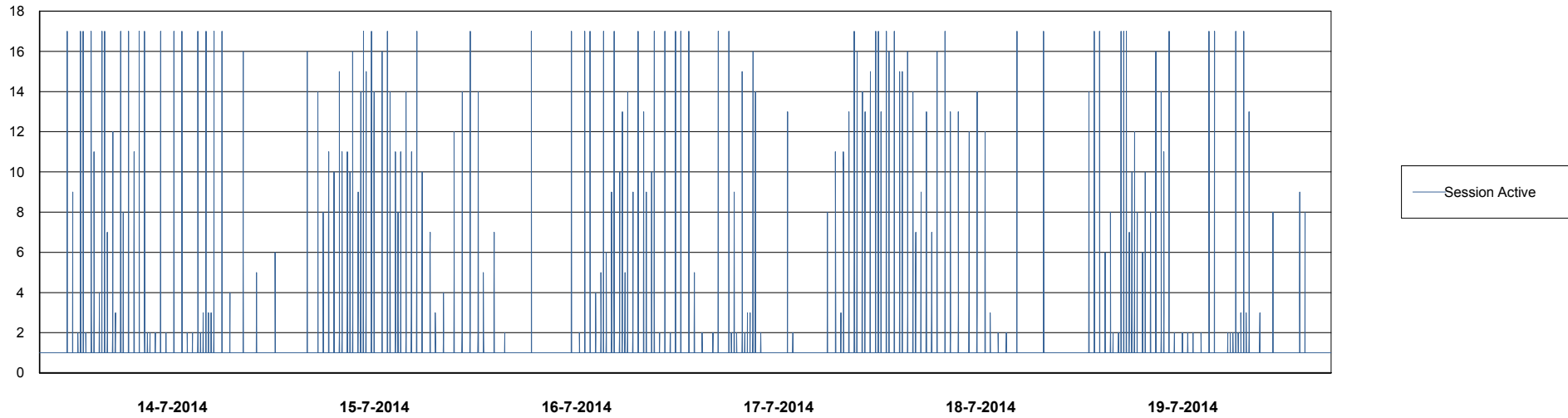
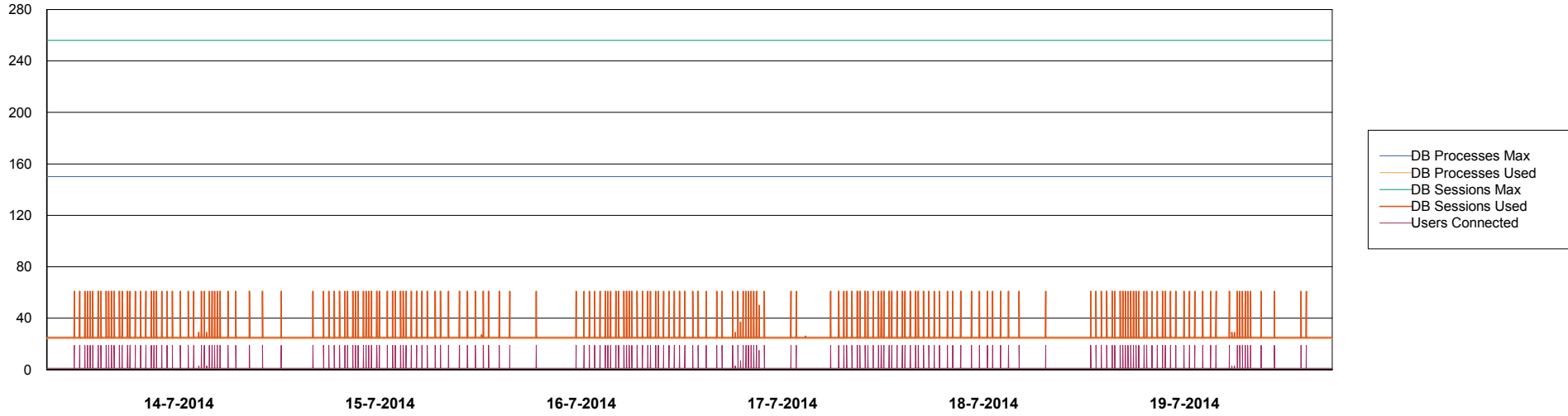


Weekly SLA Customer Report

Customer BCH Production
Database ID 28



DATABASE PERFORMANCE BCHDB_Standby



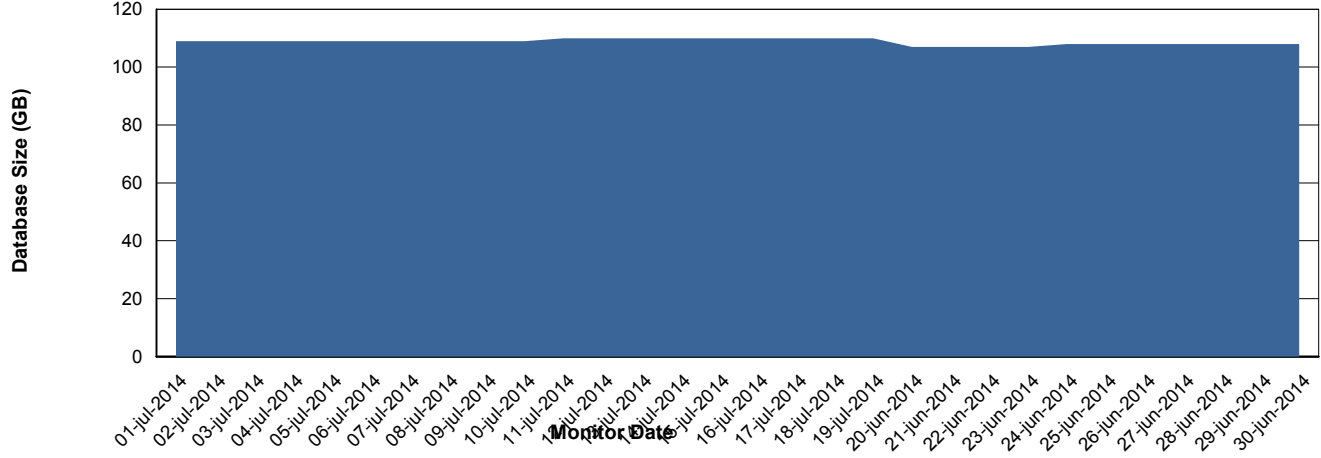
Weekly SLA Customer Report

Customer BCH Production
 Database ID 28



=====
 DATABASE SIZE BCHDB_Production
 =====

Database growth over last month



=====
 DATABASE TABLESPACES BCHDB_Production
 =====

TOTAL DATABASE SIZE PER TABLESPACE

Date	Tablespace Name	Filesize (Gb)	Usedsize (Gb)	Percentage free
19-7-2014	ABSDATA	26	0	100
	INDX	101	84	17
18-7-2014	ABSDATA	26	0	100
	INDX	101	84	17
17-7-2014	ABSDATA	26	0	100
	INDX	101	84	17
16-7-2014	ABSDATA	26	0	100
	INDX	101	84	17
15-7-2014	ABSDATA	26	0	100
	INDX	101	84	17
14-7-2014	ABSDATA	26	0	100
	INDX	101	84	17
13-7-2014	ABSDATA	26	0	100
	INDX	101	84	17

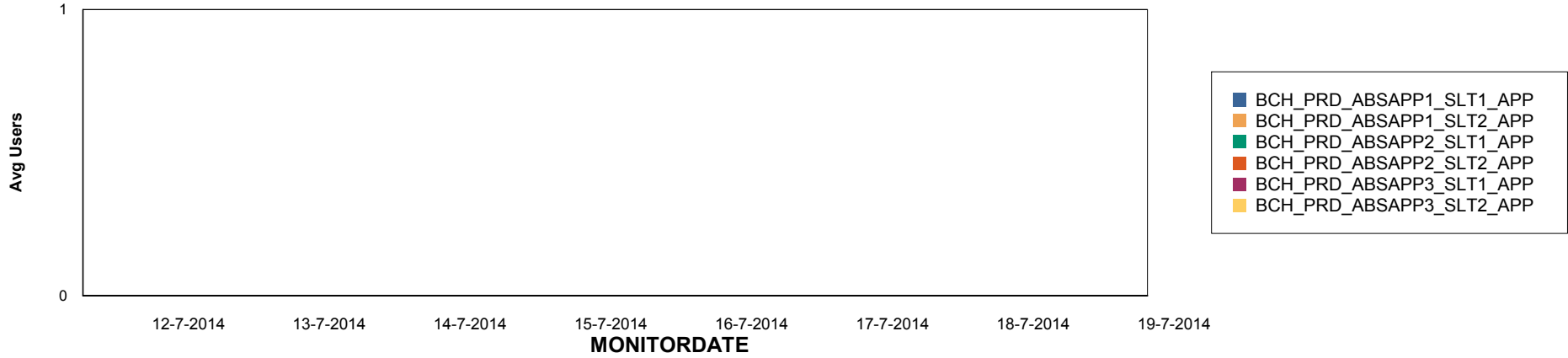
Weekly SLA Customer Report

Customer BCH Production
Database ID 28

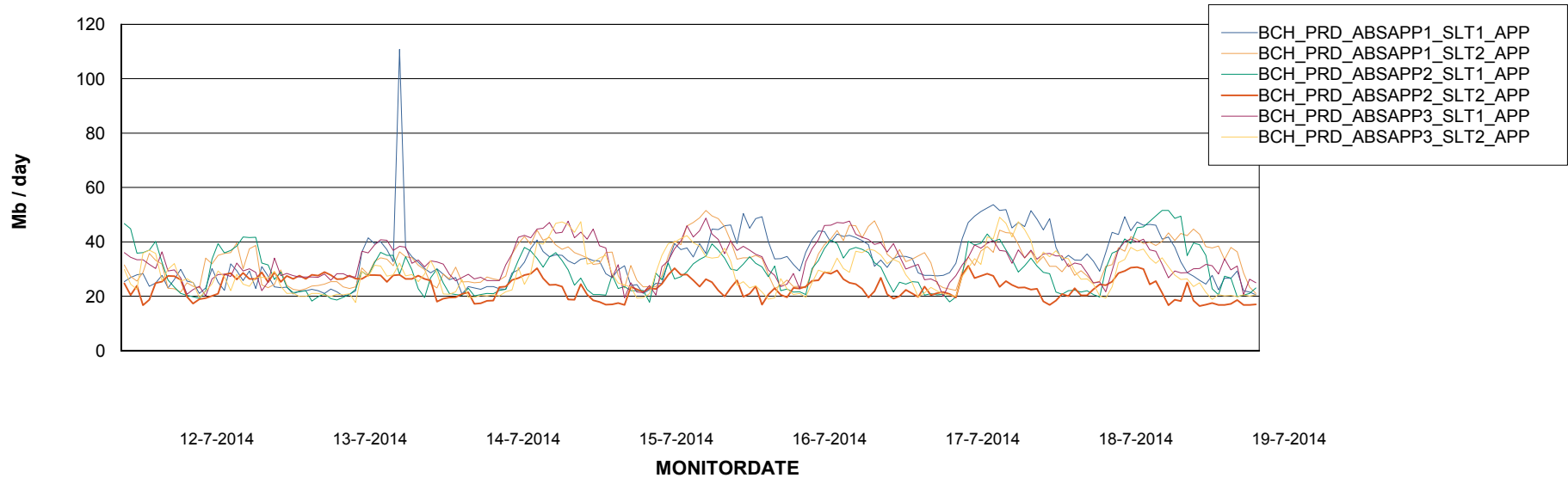


=====
ABSolute Application Server Services
=====

Disaster per ABS Server



Avg memory used per ABS Server Service



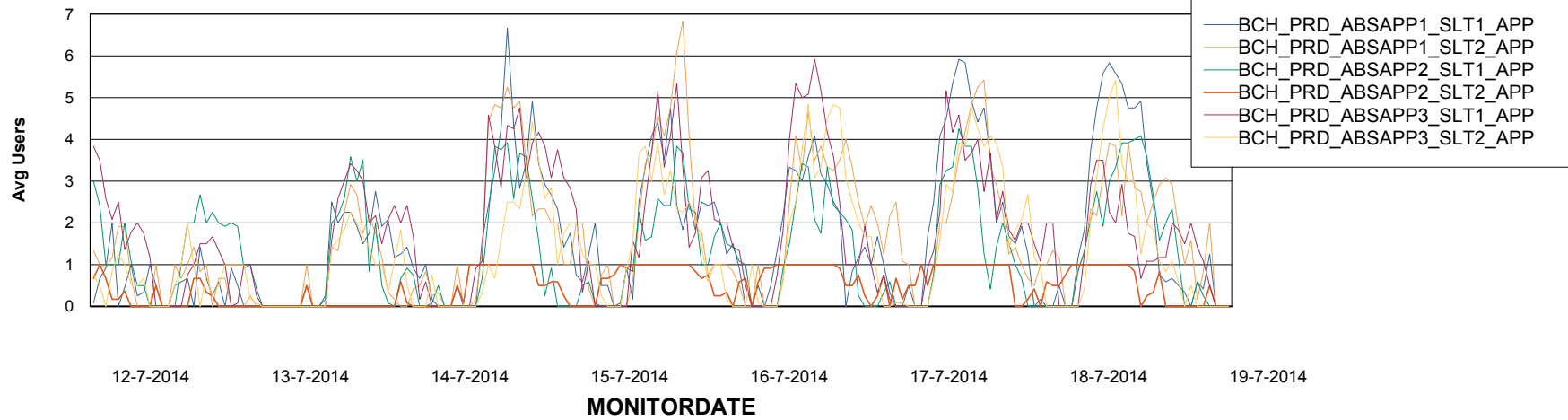
Weekly SLA Customer Report

Customer BCH Production
Database ID 28



=====
ABSolute Application Server Services
=====

Avg users per day per ABS server



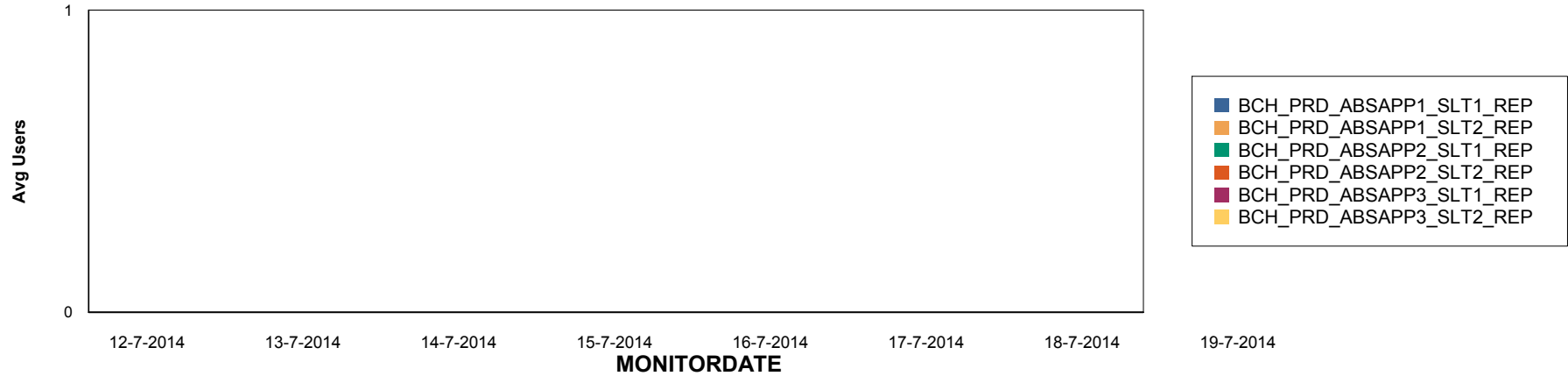
Weekly SLA Customer Report

Customer BCH Production
Database ID 28

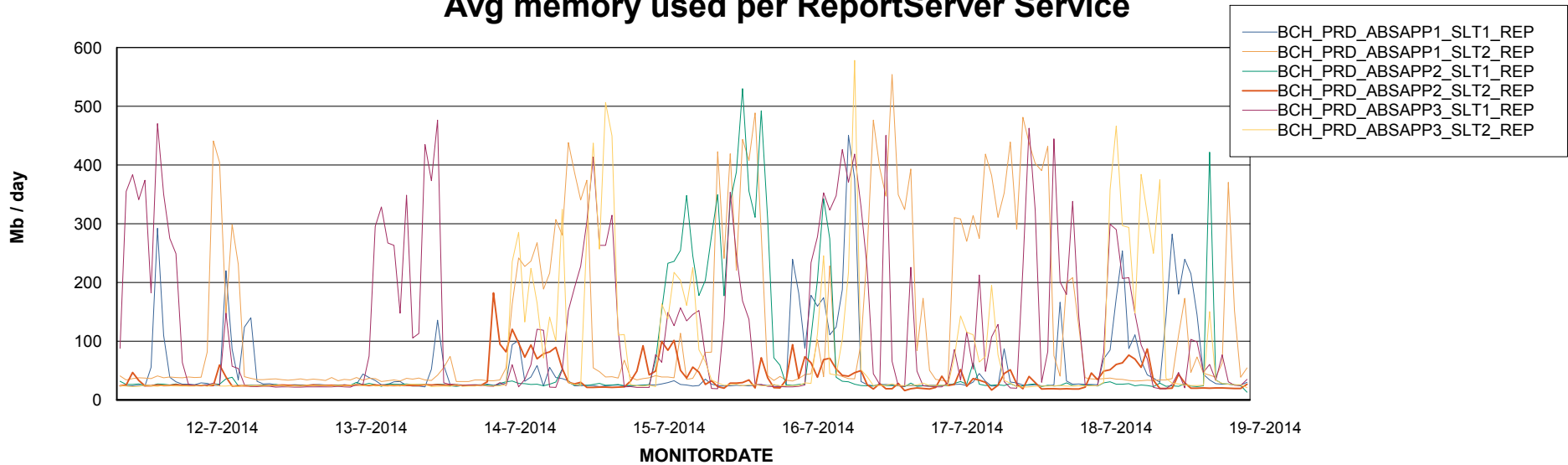


=====
ABSolute Application ReportServer Services
=====

Disaster per ReportServer



Avg memory used per ReportServer Service



Weekly SLA Customer Report

Customer BCH Production
Database ID 28



Disaster per ABS component

