

Weekly SLA Customer Report

Customer NIX_Production
 Database ID 51



=====
 HARDDISK USAGE NIX_PRD_ABSAPP1
 =====

	Total disk space on C (GB)	Free disk space on C (GB)
14-7-2014	136	87
13-7-2014	136	87
12-7-2014	136	87
11-7-2014	136	87
10-7-2014	136	87
9-7-2014	136	87
8-7-2014	136	87

=====
 HARDDISK USAGE NIX_PRD_ABSWEB1
 =====

	Total disk space on C (GB)	Free disk space on C (GB)
14-7-2014	930	729
13-7-2014	930	729
12-7-2014	930	729
11-7-2014	930	729
10-7-2014	930	729
9-7-2014	930	729
8-7-2014	930	729

Weekly SLA Customer Report

Customer NIX_Production
 Database ID 51



=====
 HARDDISK USAGE NIX_PRD_ORACLE_BI1
 =====

	Total disk space on C (GB)	Free disk space on C (GB)	Total disk space on D (GB)	Free disk space on D (GB)	Total disk space on E (GB)	Free disk space on E (GB)
14-7-2014	40	8	279	181	236	171
13-7-2014	40	8	279	181	236	171
12-7-2014	40	8	279	181	236	171
11-7-2014	40	9	279	181	236	171
10-7-2014	40	9	279	181	236	172
9-7-2014	40	9	279	181	236	172
8-7-2014	40	9	279	181	236	171

=====
 HARDDISK USAGE NIX_PRD_ORCDB1
 =====

	Total disk space on C (GB)	Free disk space on C (GB)	Total disk space on D (GB)	Free disk space on D (GB)	Total disk space on E (GB)	Free disk space on E (GB)
14-7-2014	136	28	136	56	136	102
13-7-2014	136	28	136	56	136	103
12-7-2014	136	28	136	56	136	103
11-7-2014	136	28	136	56	136	103
10-7-2014	136	28	136	56	136	104
9-7-2014	136	28	136	56	136	103
8-7-2014	136	28	136	56	136	103

Weekly SLA Customer Report

Customer NIX_Production
Database ID 51



HARDDISK USAGE NIX_PRD_ORCDB2

	Total disk space on C (GB)	Free disk space on C (GB)	Total disk space on D (GB)	Free disk space on D (GB)	Total disk space on E (GB)	Free disk space on E (GB)
14-7-2014	279	57	279	70	279	98
13-7-2014	279	57	279	70	279	118
12-7-2014	279	57	279	70	279	152
11-7-2014	279	57	279	70	279	182
10-7-2014	279	57	279	70	279	182
9-7-2014	279	58	279	70	279	166
8-7-2014	279	57	279	70	279	126

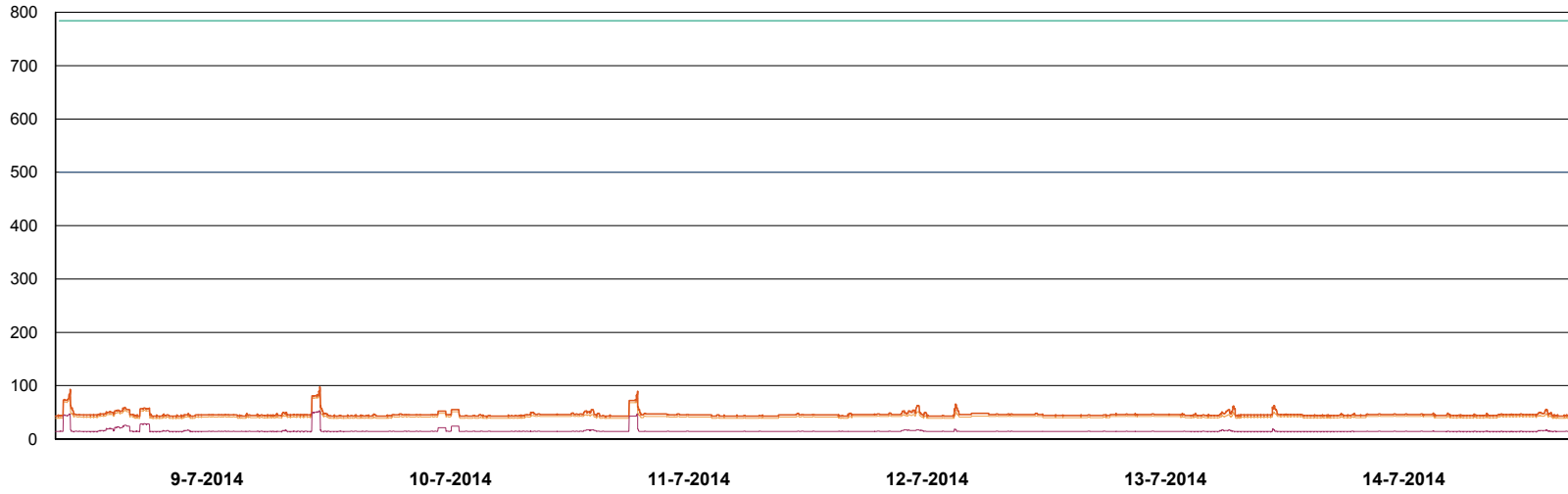
Weekly SLA Customer Report

Customer NIX_Production
Database ID 51

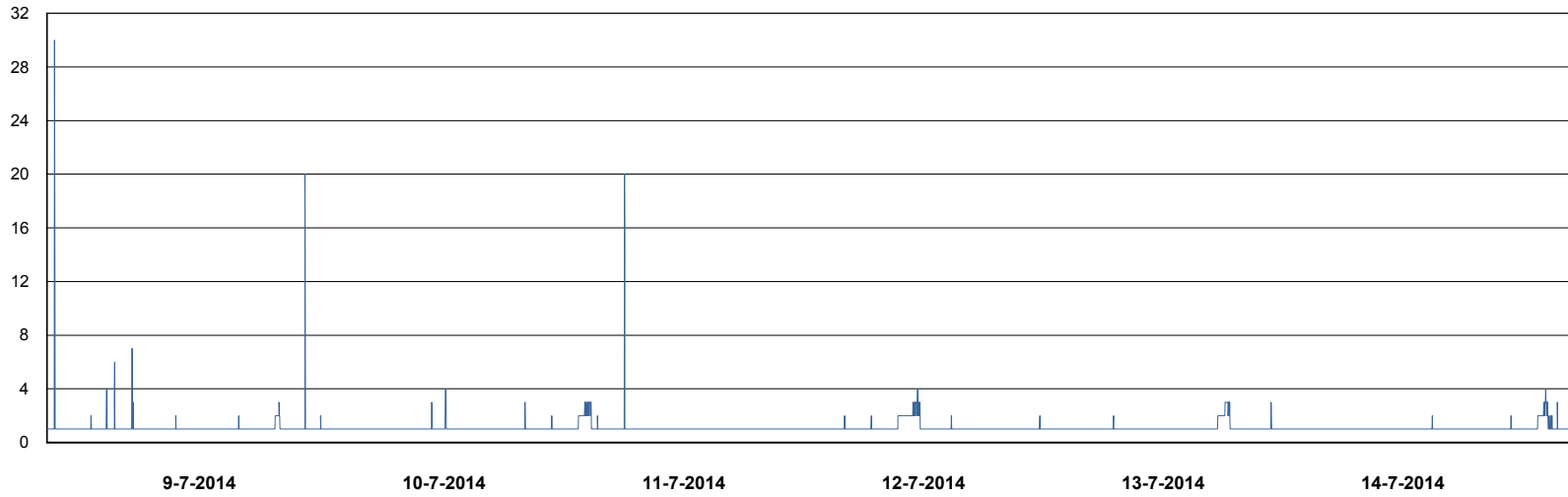


DATABASE PERFORMANCE

NIXDB_BI



- DB Processes Max
- DB Processes Used
- DB Sessions Max
- DB Sessions Used
- Users Connected



- Session Active

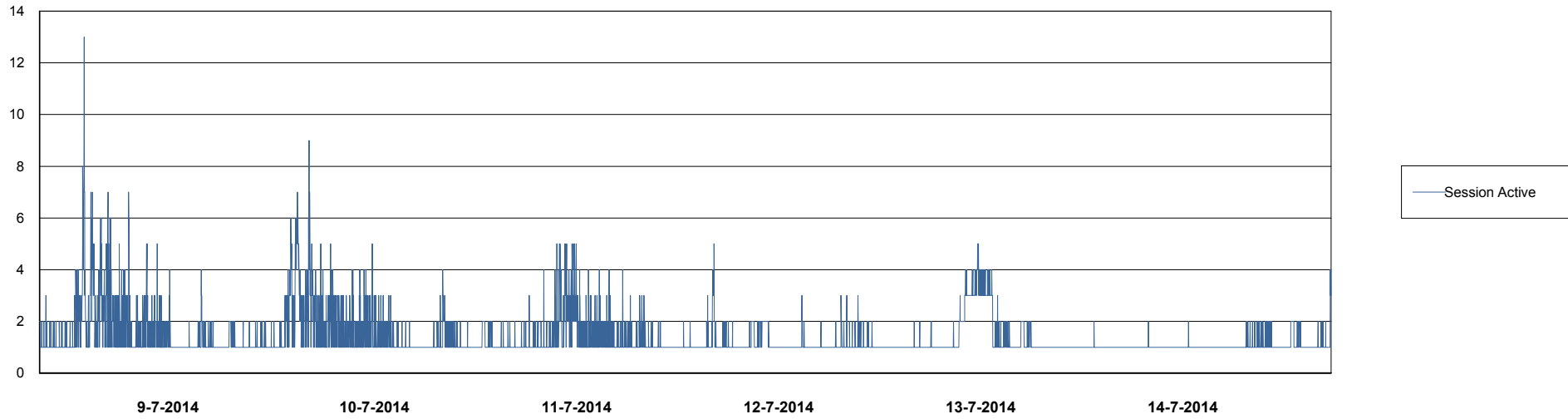
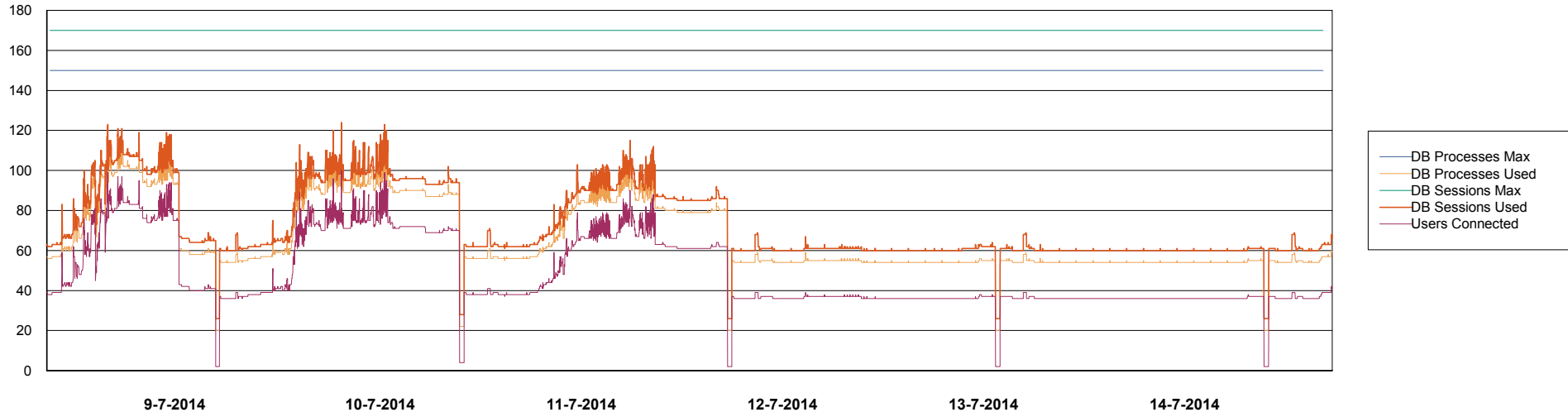
Weekly SLA Customer Report

Customer NIX_Production
Database ID 51



DATABASE PERFORMANCE

NIXDB_Production

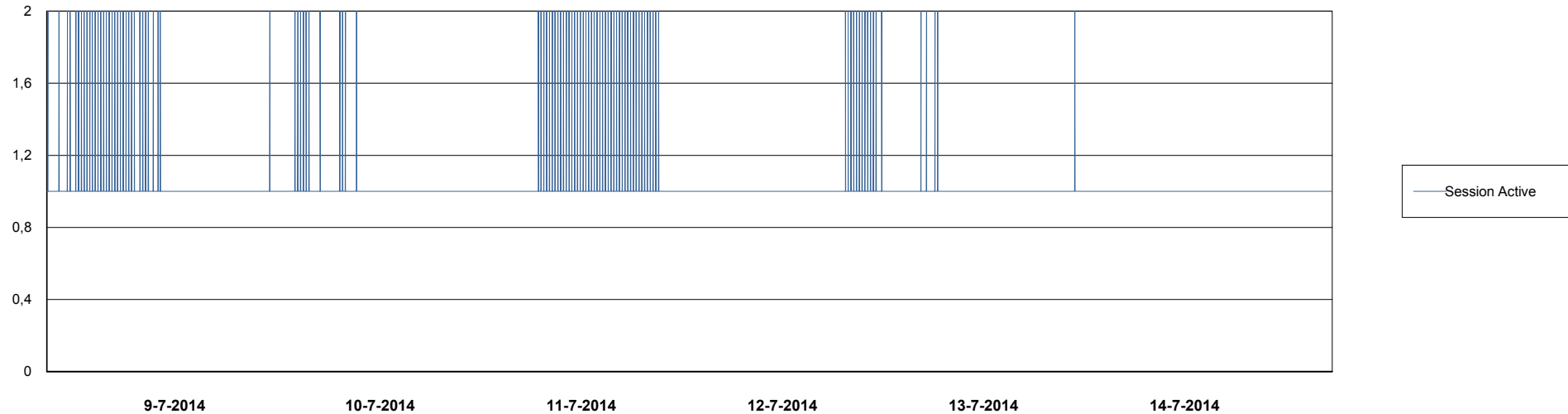
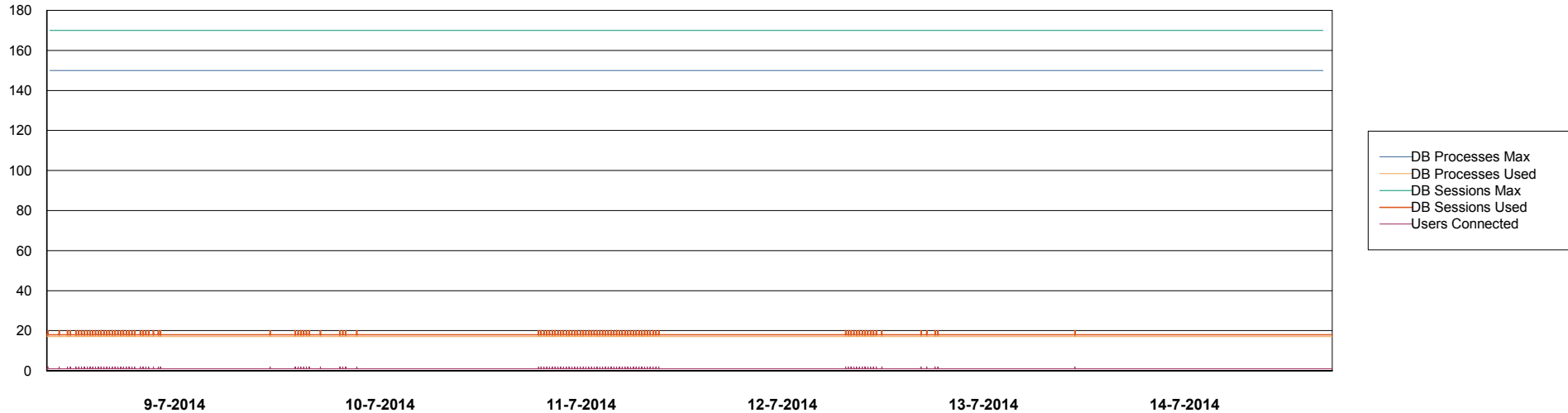


Weekly SLA Customer Report

Customer NIX_Production
Database ID 51



DATABASE PERFORMANCE NIXDB_Standby



Weekly SLA Customer Report

Customer NIX_Production
 Database ID 51



=====
 DATABASE TABLESPACES NIXDB_BI
 =====

TOTAL DATABASE SIZE PER TABLESPACE

Date	Tablespace Name	Filesize (Gb)	Usedsize (Gb)	Percentage free
14-7-2014	ABSDATA	20	16	20
	INDX	40	25	38
13-7-2014	ABSDATA	20	16	20
	INDX	40	25	38
12-7-2014	ABSDATA	20	16	20
	INDX	40	25	38
11-7-2014	ABSDATA	20	16	20
	INDX	40	25	38
10-7-2014	ABSDATA	20	16	20
	INDX	40	25	38
9-7-2014	ABSDATA	20	16	20
	INDX	40	25	38
8-7-2014	ABSDATA	20	16	20
	INDX	40	25	38

Weekly SLA Customer Report

Customer NIX_Production
 Database ID 51



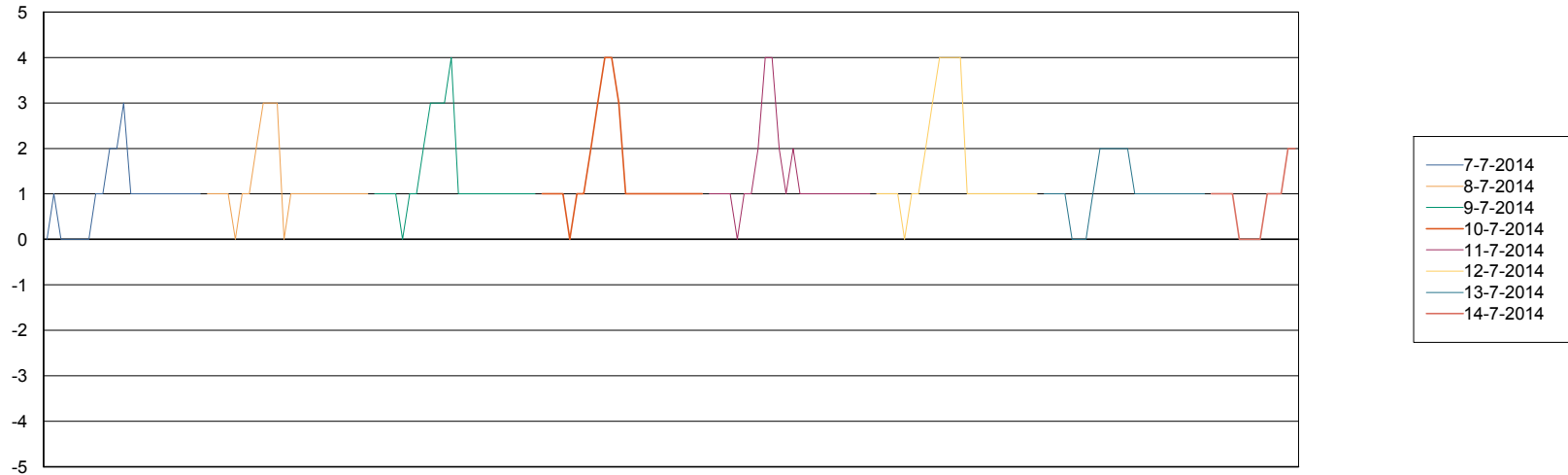
=====
 DATABASE TABLESPACES NIXDB_Production
 =====

TOTAL DATABASE SIZE PER TABLESPACE

Date	Tablespace Name	Filesize (Gb)	Usedsize (Gb)	Percentage free
14-7-2014	ABSDATA	28	26	7
	INDX	77	70	9
13-7-2014	ABSDATA	28	26	7
	INDX	77	70	9
12-7-2014	ABSDATA	28	26	7
	INDX	77	70	9
11-7-2014	ABSDATA	28	26	7
	INDX	77	70	9
10-7-2014	ABSDATA	28	26	7
	INDX	77	70	9
9-7-2014	ABSDATA	28	26	7
	INDX	77	70	9
8-7-2014	ABSDATA	28	26	7
	INDX	77	70	9

=====
 STANDBY DATABASE HEALTH NIX_Production
 =====

Recovery lag for last 7 days



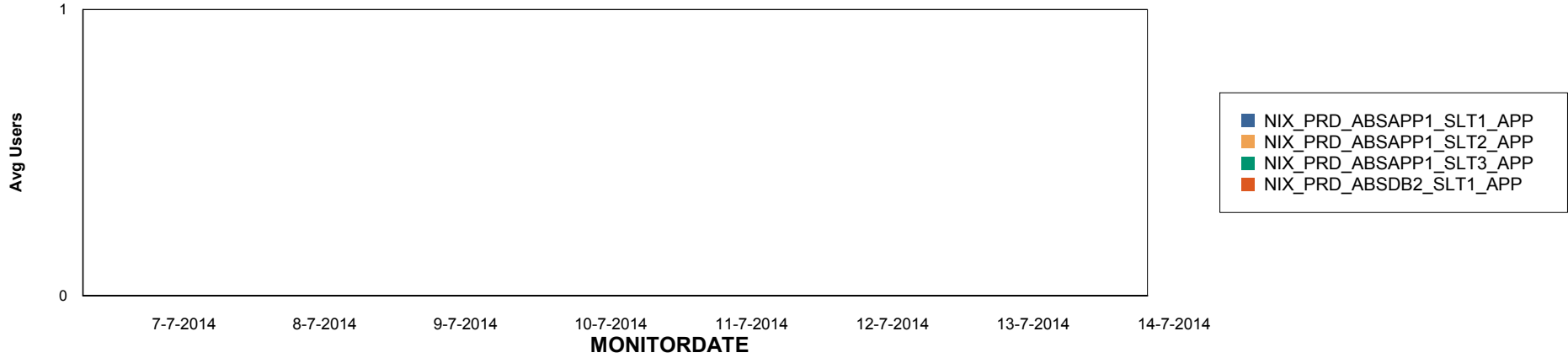
Weekly SLA Customer Report

Customer NIX_Production
Database ID 51

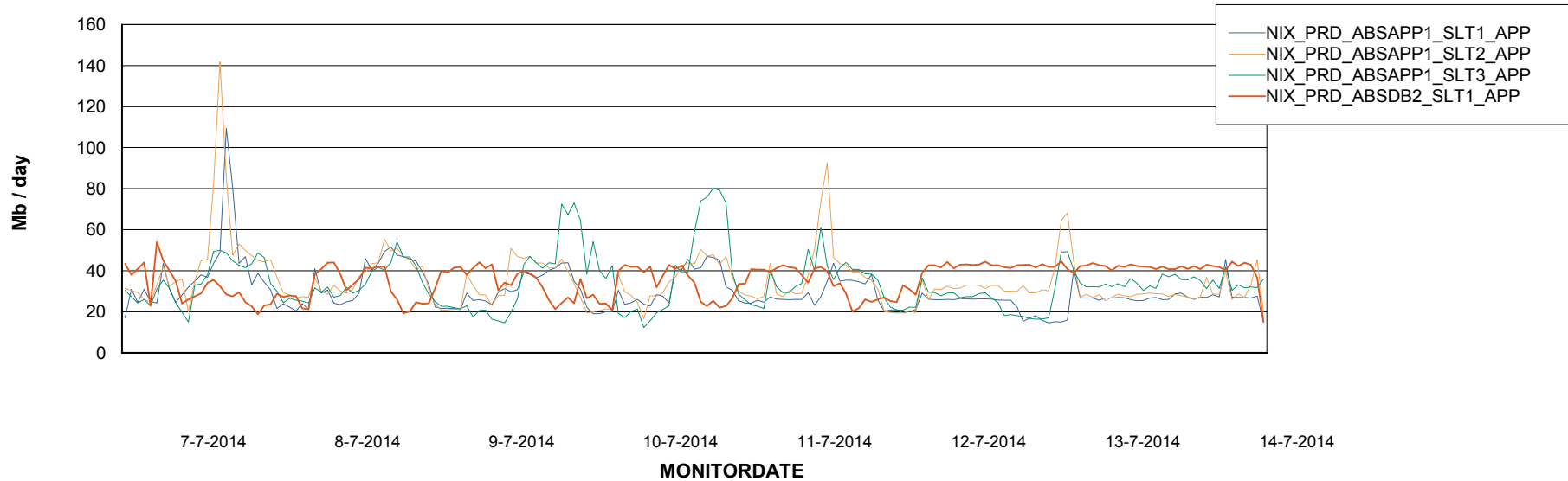


ABSolute Application Server Services

Disaster per ABS Server



Avg memory used per ABS Server Service



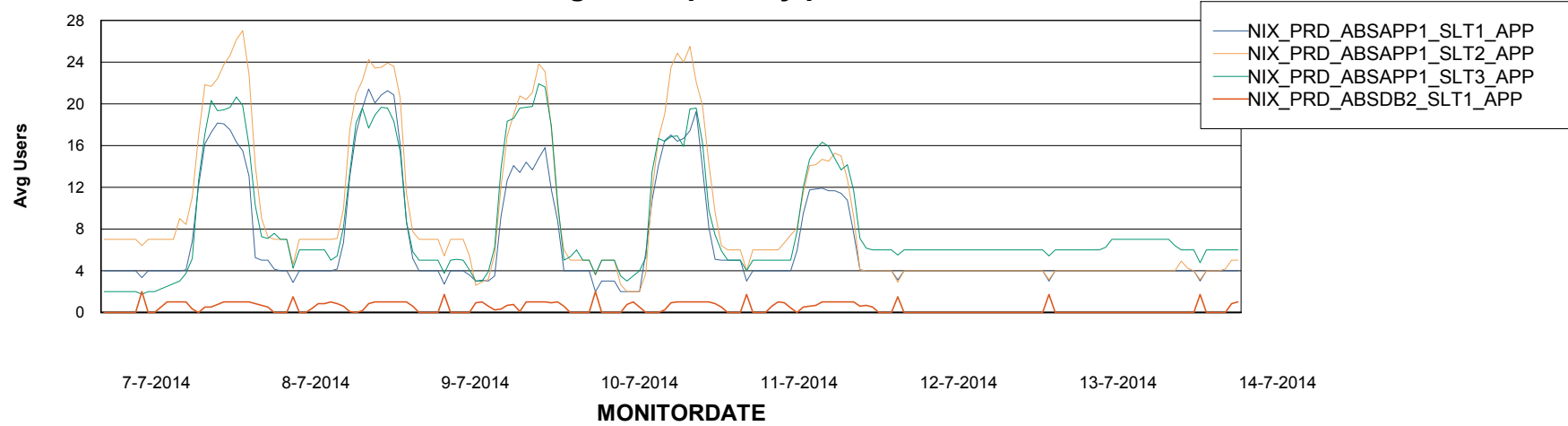
Weekly SLA Customer Report

Customer NIX_Production
Database ID 51



=====
ABSolute Application Server Services
=====

Avg users per day per ABS server



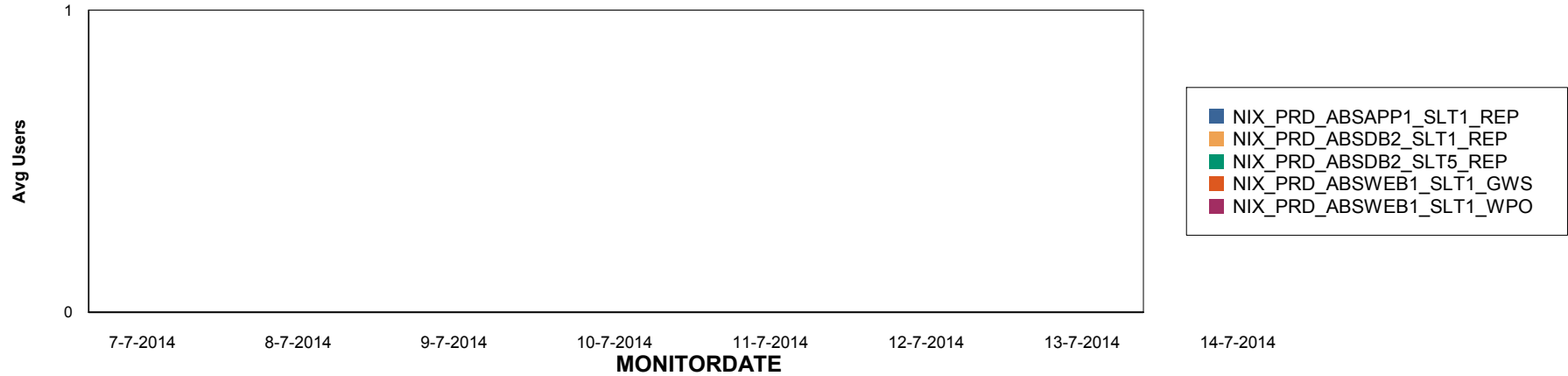
Weekly SLA Customer Report

Customer NIX_Production
Database ID 51

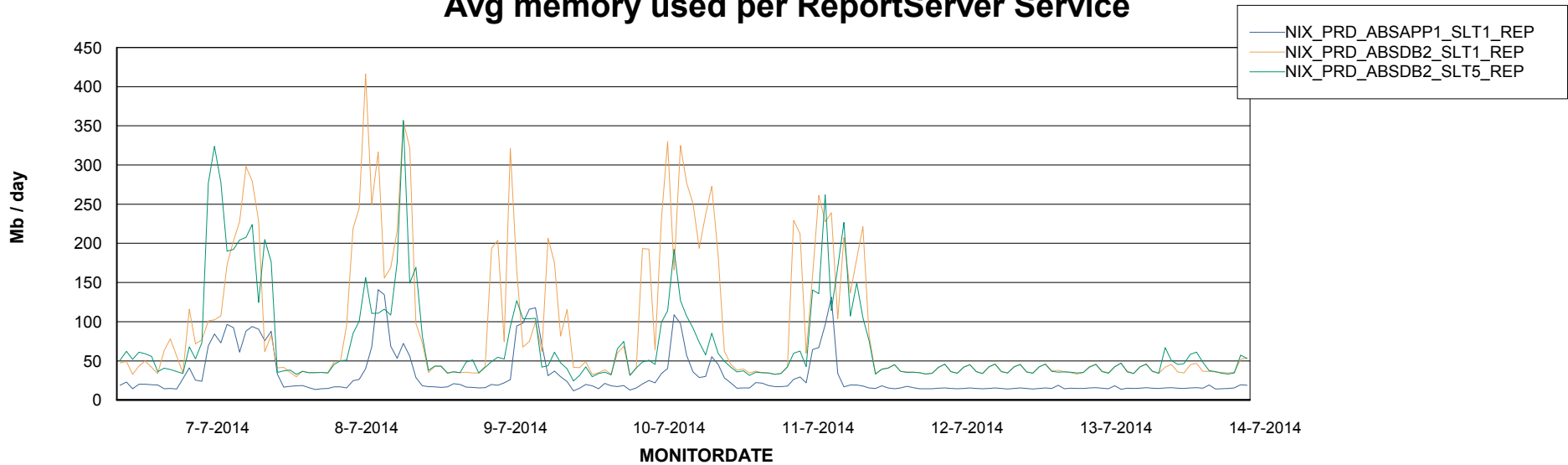


=====
ABSolute Application ReportServer Services
=====

Disaster per ReportServer



Avg memory used per ReportServer Service



Weekly SLA Customer Report

Customer NIX_Production
Database ID 51



Disaster per ABS component

