

# Weekly SLA Customer Report

---

Customer      WBL\_Production  
Database ID    40

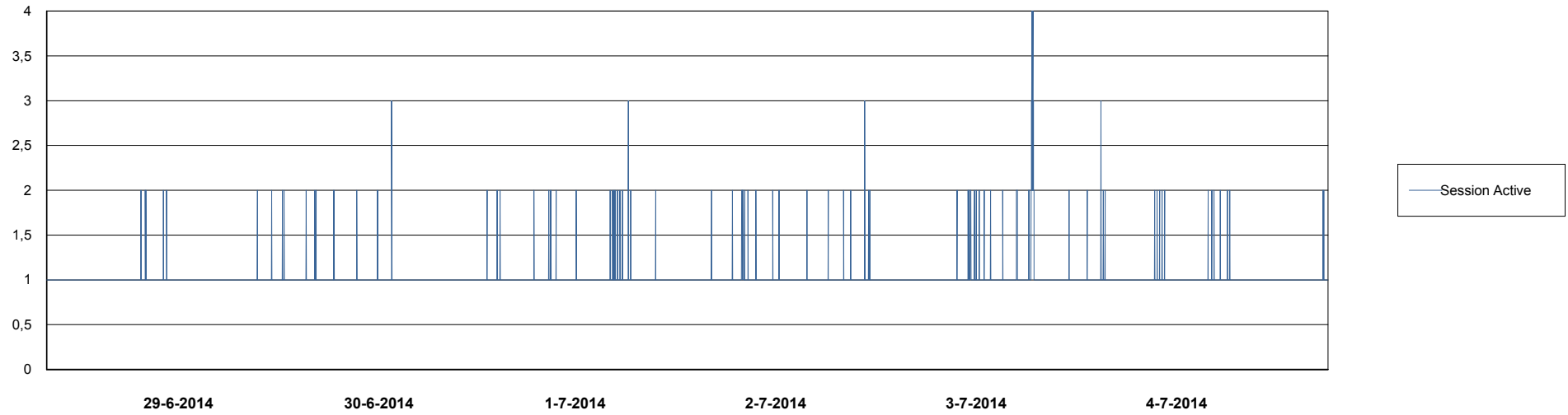
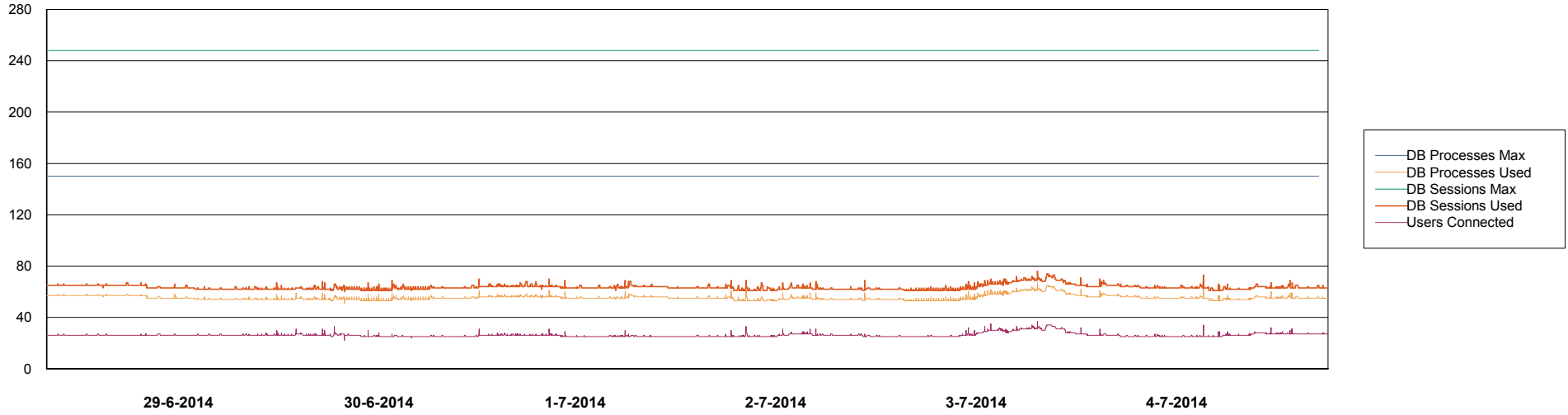


# Weekly SLA Customer Report

Customer WBL\_Production  
Database ID 40



## DATABASE PERFORMANCE WBLDB\_Production

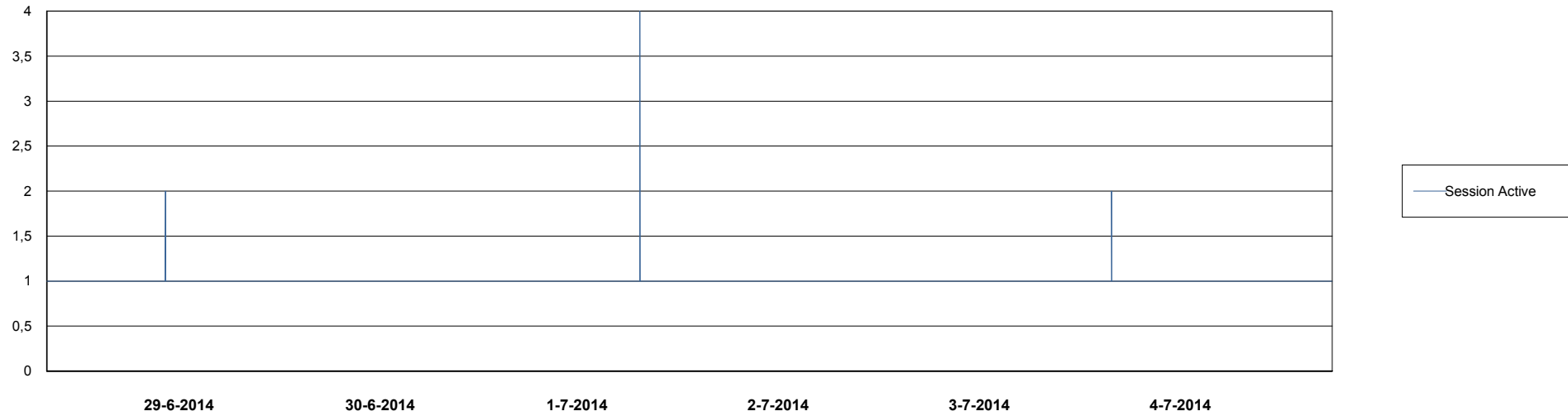
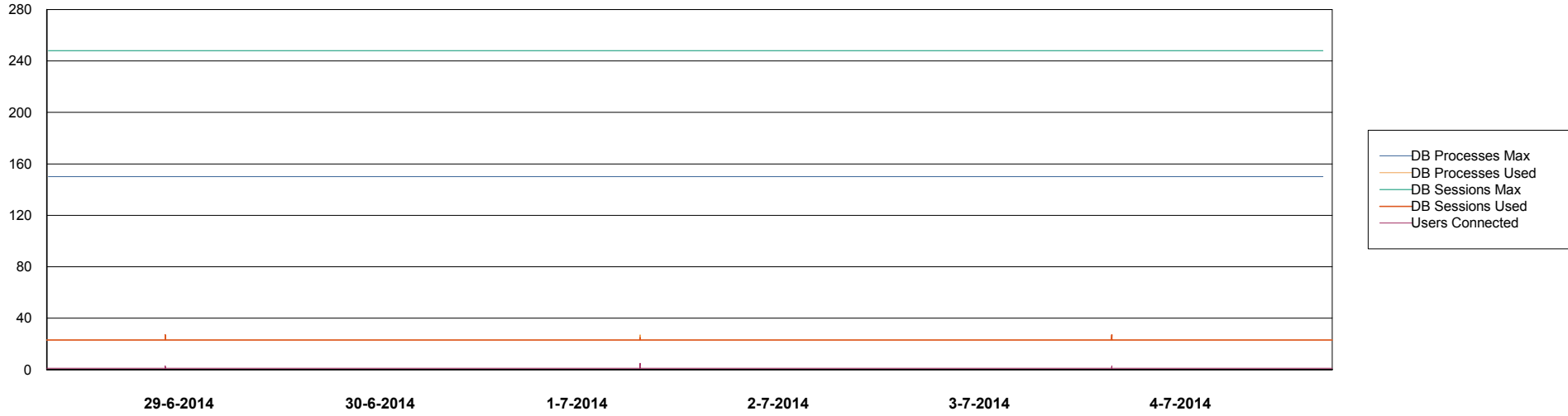


# Weekly SLA Customer Report

Customer WBL\_Production  
Database ID 40



DATABASE PERFORMANCE WBLDB\_Standby



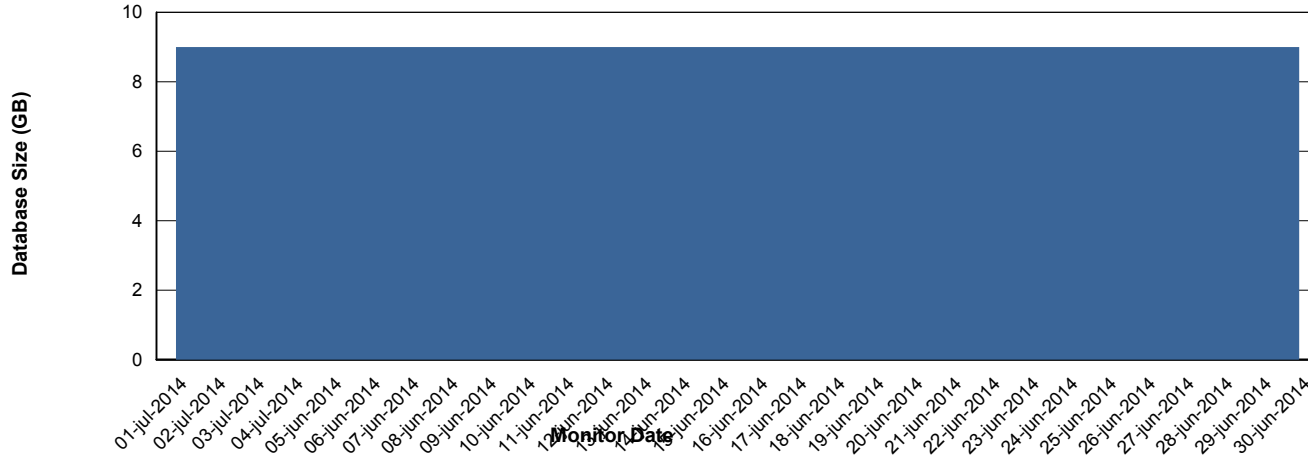
# Weekly SLA Customer Report

Customer WBL\_Production  
 Database ID 40



=====  
 DATABASE SIZE WBLDB\_Production  
 =====

## Database growth over last month



=====  
 DATABASE TABLESPACES WBLDB\_Production  
 =====

### TOTAL DATABASE SIZE PER TABLESPACE

Date	Tablespace Name	Filesize (Gb)	Usedsize (Gb)	Percentage free
4-7-2014	ABSDATA	6	4	33
	INDX	5	4	20
3-7-2014	ABSDATA	6	4	33
	INDX	5	4	20
2-7-2014	ABSDATA	6	4	33
	INDX	5	4	20
1-7-2014	ABSDATA	6	4	33
	INDX	5	4	20
30-6-2014	ABSDATA	6	4	33
	INDX	5	4	20
29-6-2014	ABSDATA	6	4	33
	INDX	5	4	20
28-6-2014	ABSDATA	6	4	33
	INDX	5	4	20

# Weekly SLA Customer Report

Customer WBL\_Production  
Database ID 40



=====  
STANDBY DATABASE HEALTH WBL\_Production  
=====

### Recovery lag for last 7 days

