

Weekly SLA Customer Report

Customer BCH Production
 Database ID 28



=====
 HARDDISK USAGE BCH_PRD_ABSAPP1
 =====

	Total disk space on C (GB)	Free disk space on C (GB)	Total disk space on D (GB)	Free disk space on D (GB)
4-7-2014	45	9	30	30
3-7-2014	45	9	30	30
2-7-2014	45	9	30	30
1-7-2014	45	9	30	30
30-6-2014	45	9	30	30
29-6-2014	45	9	30	30
28-6-2014	45	9	30	30

=====
 HARDDISK USAGE BCH_PRD_ABSAPP2
 =====

	Total disk space on C (GB)	Free disk space on C (GB)	Total disk space on D (GB)	Free disk space on D (GB)
4-7-2014	45	7	30	30
3-7-2014	45	7	30	30
2-7-2014	45	7	30	30
1-7-2014	45	7	30	30
30-6-2014	45	7	30	30
29-6-2014	45	7	30	30
28-6-2014	45	7	30	30

Weekly SLA Customer Report

Customer BCH Production
 Database ID 28



=====
 HARDDISK USAGE BCH_PRD_ABSAPP3
 =====

	Total disk space on C (GB)	Free disk space on C (GB)	Total disk space on D (GB)	Free disk space on D (GB)
4-7-2014	45	8	30	30
3-7-2014	45	8	30	30
2-7-2014	45	8	30	30
1-7-2014	45	8	30	30
30-6-2014	45	8	30	30
29-6-2014	45	8	30	30
28-6-2014	45	8	30	30

=====
 HARDDISK USAGE BCH_PRD_ABSWEB1
 =====

	Used disk space on C (GB)	Total disk space on C (GB)	Free disk space on C (GB)
4-7-2014	29	45	16
3-7-2014	29	45	16
2-7-2014	29	45	16
1-7-2014	29	45	16
30-6-2014	29	45	16
29-6-2014	29	45	16
28-6-2014	29	45	16

Weekly SLA Customer Report

Customer BCH Production
 Database ID 28



=====
 HARDDISK USAGE BCH_PRD_ABSWEB2
 =====

	Used disk space on C (GB)	Total disk space on C (GB)	Free disk space on C (GB)
4-7-2014	28	45	17
3-7-2014	28	45	17
2-7-2014	28	45	17
1-7-2014	28	45	17
30-6-2014	28	45	17
29-6-2014	28	45	17
28-6-2014	28	45	17

=====
 HARDDISK USAGE BCH_PRD_ORCDB1
 =====

	Total disk space on C (GB)	Free disk space on C (GB)	Total disk space on D (GB)	Free disk space on D (GB)
4-7-2014	278	166	278	54
3-7-2014	278	166	278	57
2-7-2014	278	166	278	60
1-7-2014	278	167	278	61
30-6-2014	278	167	278	64
29-6-2014	278	167	278	66
28-6-2014	278	167	278	67

Weekly SLA Customer Report

Customer BCH Production
Database ID 28



HARDDISK USAGE BCH_PRD_ORCDB2

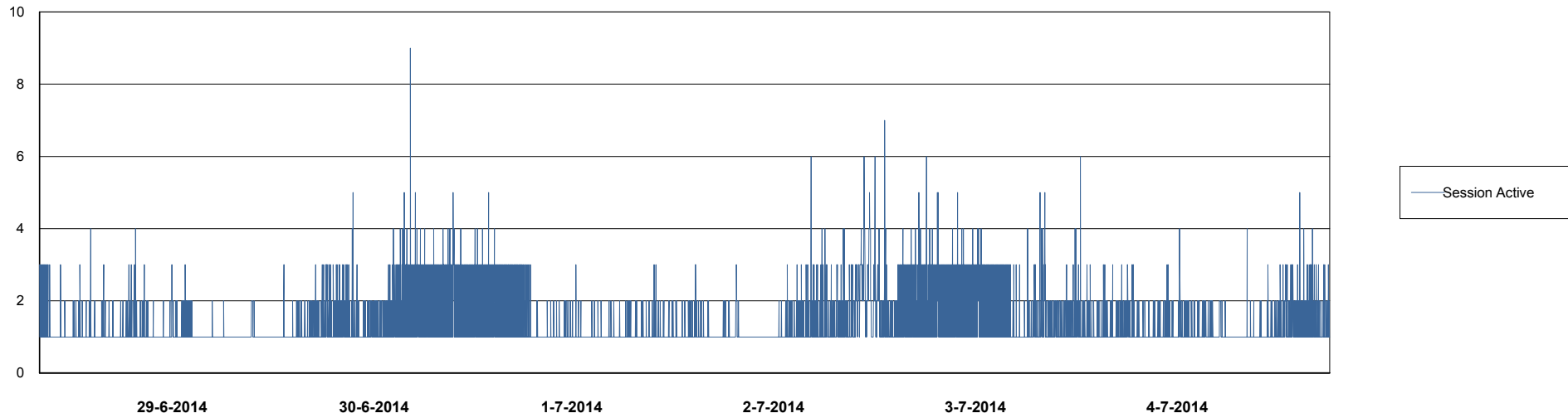
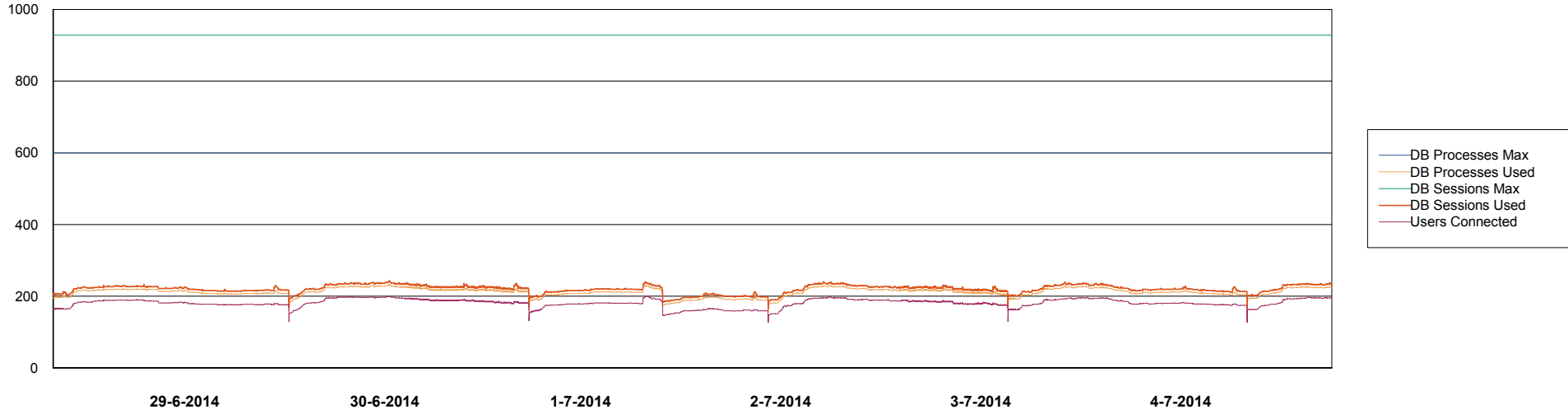
	Total disk space on C (GB)	Free disk space on C (GB)	Total disk space on D (GB)	Free disk space on D (GB)
4-7-2014	278	198	278	57
3-7-2014	278	198	278	60
2-7-2014	278	198	278	63
1-7-2014	278	198	278	64
30-6-2014	278	198	278	67
29-6-2014	278	198	278	69
28-6-2014	278	198	278	70

Weekly SLA Customer Report

Customer BCH Production
Database ID 28



=====
DATABASE PERFORMANCE BCHDB_Production =====
=====

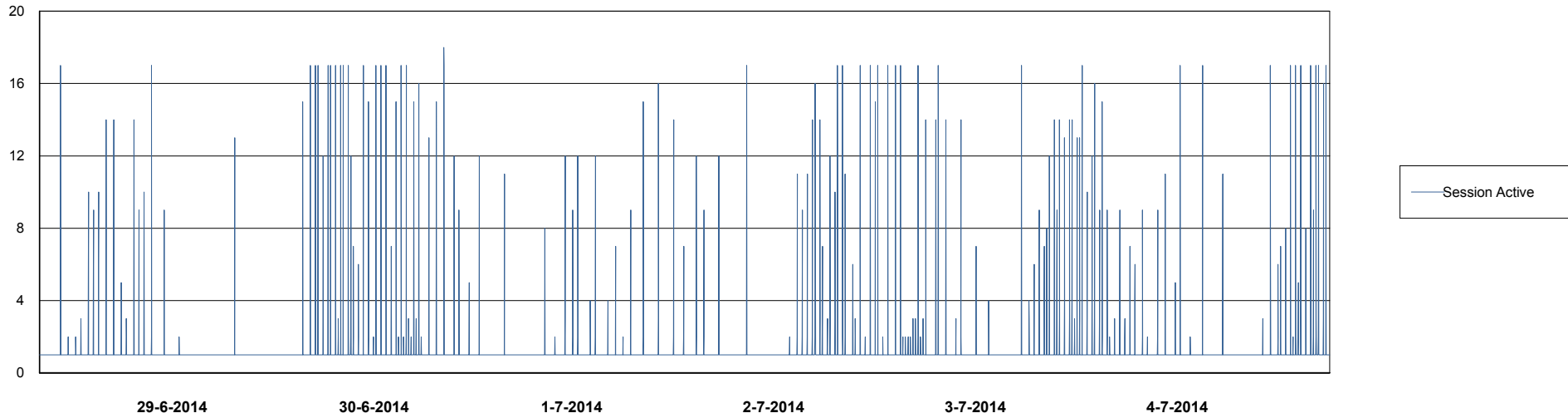
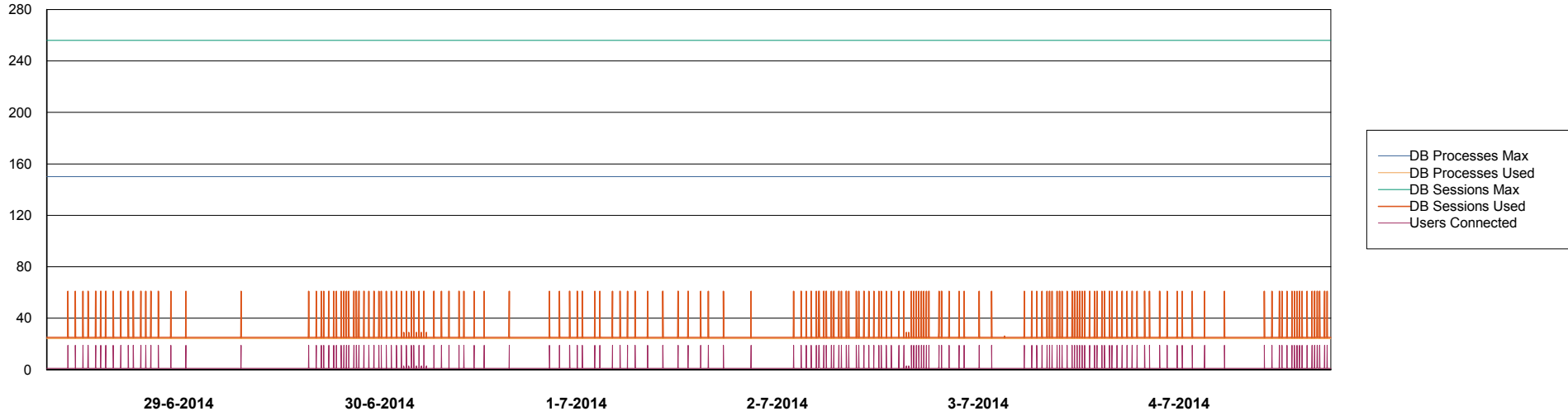


Weekly SLA Customer Report

Customer BCH Production
Database ID 28



DATABASE PERFORMANCE BCHDB_Standby



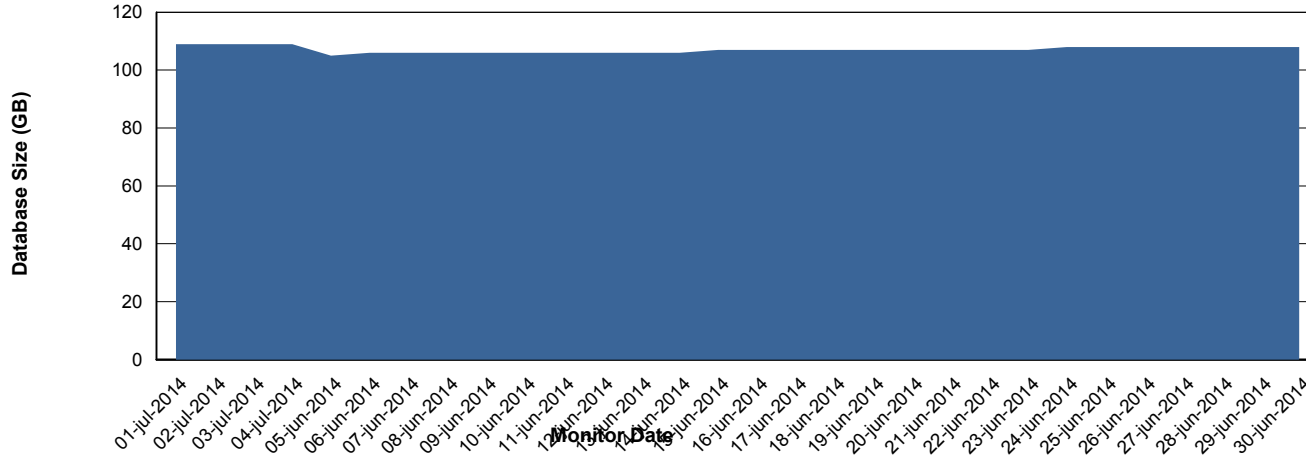
Weekly SLA Customer Report

Customer BCH Production
 Database ID 28



=====
 DATABASE SIZE BCHDB_Production
 =====

Database growth over last month



=====
 DATABASE TABLESPACES BCHDB_Production
 =====

TOTAL DATABASE SIZE PER TABLESPACE

Date	Tablespace Name	Filesize (Gb)	Usedsize (Gb)	Percentage free
4-7-2014	ABSDATA	26	0	100
	INDX	101	84	17
3-7-2014	ABSDATA	26	0	100
	INDX	101	84	17
2-7-2014	ABSDATA	26	0	100
	INDX	101	82	19
1-7-2014	ABSDATA	26	0	100
	INDX	101	82	19
30-6-2014	ABSDATA	26	0	100
	INDX	101	82	19
29-6-2014	ABSDATA	26	0	100
	INDX	101	82	19
28-6-2014	ABSDATA	26	0	100
	INDX	101	82	19

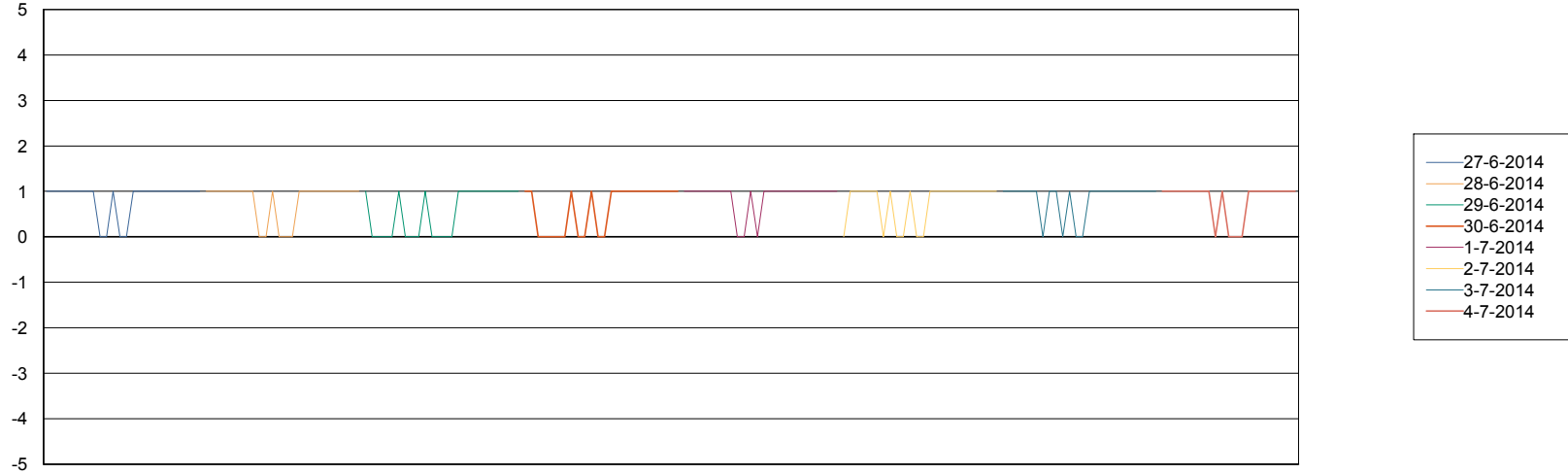
Weekly SLA Customer Report

Customer BCH Production
Database ID 28



=====
STANDBY DATABASE HEALTH BCH Production
=====

Recovery lag for last 7 days



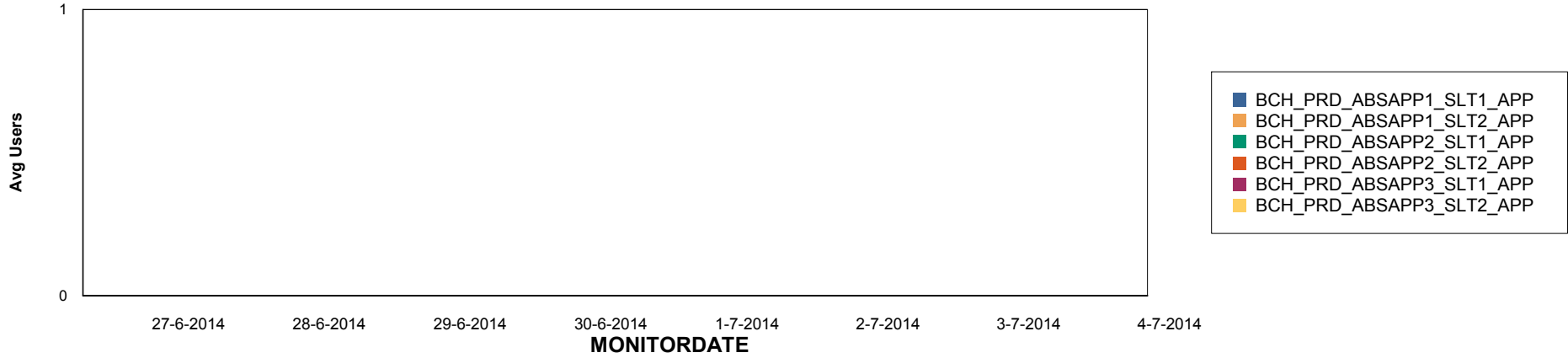
Weekly SLA Customer Report

Customer BCH Production
Database ID 28

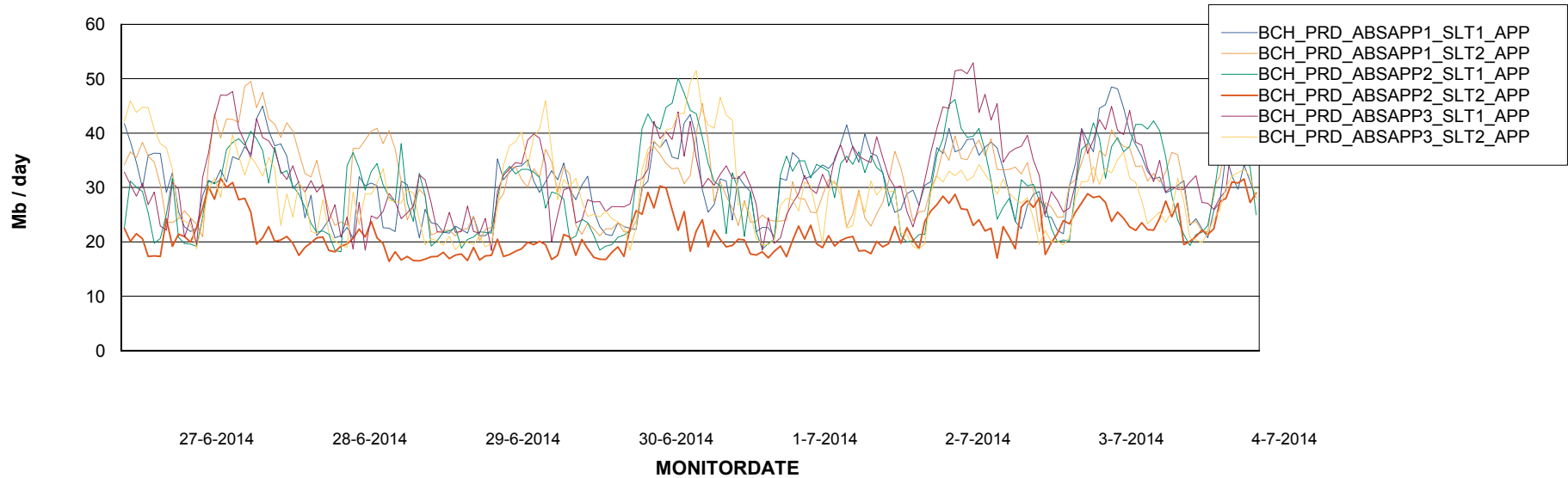


=====
ABSolute Application Server Services
=====

Disaster per ABS Server



Avg memory used per ABS Server Service



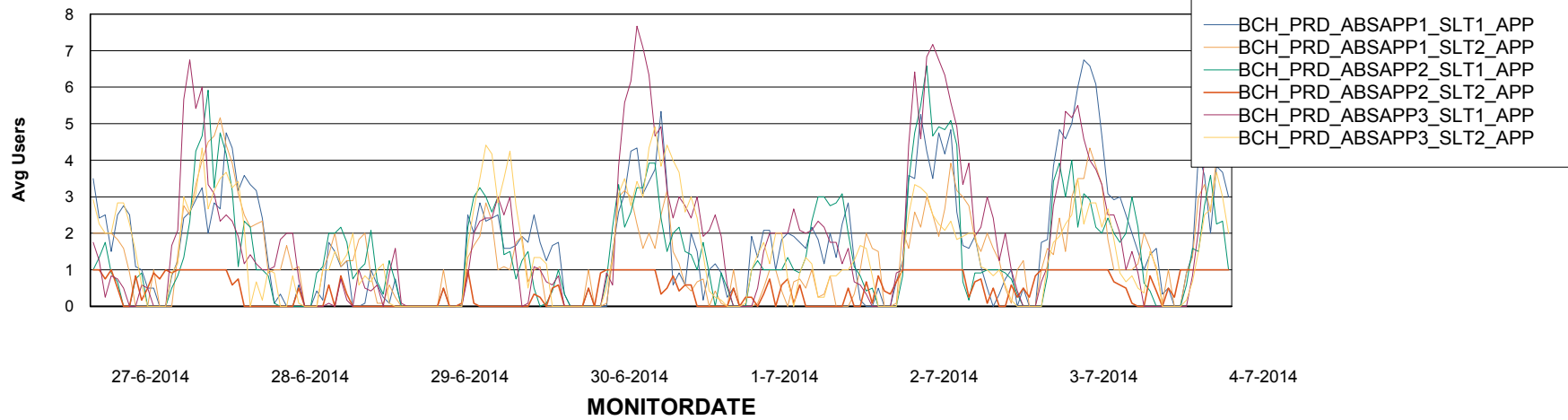
Weekly SLA Customer Report

Customer BCH Production
Database ID 28



=====
ABSolute Application Server Services
=====

Avg users per day per ABS server



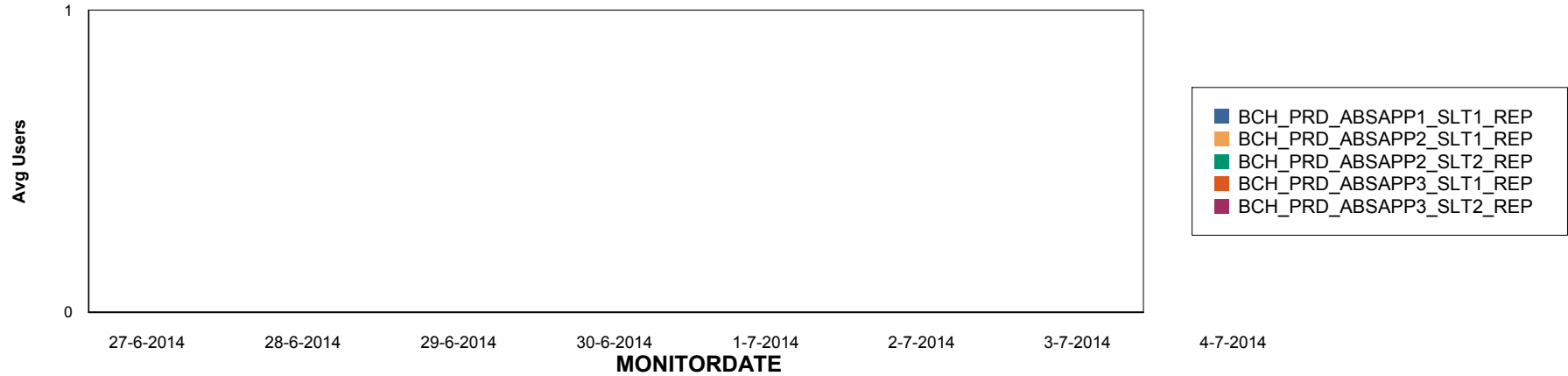
Weekly SLA Customer Report

Customer BCH Production
Database ID 28

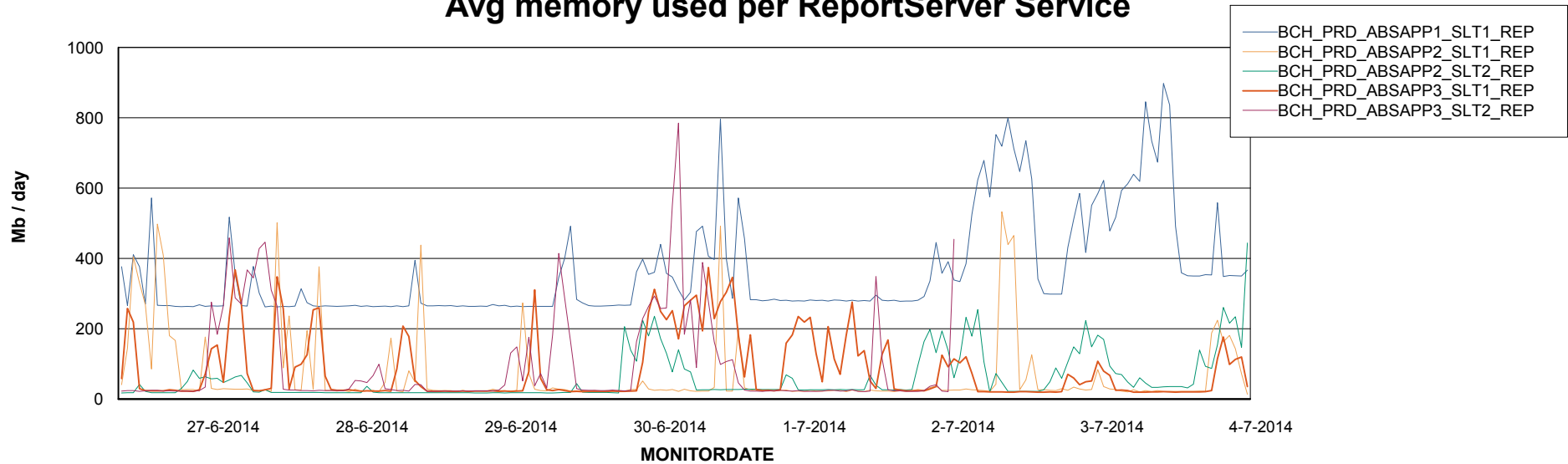


=====
ABSolute Application ReportServer Services
=====

Disaster per ReportServer



Avg memory used per ReportServer Service



Weekly SLA Customer Report

Customer BCH Production
Database ID 28



Disaster per ABS component

