

A large, light grey graphic element in the center of the page. It consists of a downward-pointing triangle with a white wavy line passing through it, mirroring the logo's design. The text "Menu Manual" is centered within the upper portion of this graphic.

Menu Manual

Version management

Updated to version	Date
9.04.00	10-Aug-2020

Contents

1	Menus	4
1.1.1	Multi language menus	6
1.2	Assigning Access rights.....	6
1.3	Assigning User Groups	7
1.4	Error messages.....	8

1 Menus

With the Menu Application you can define the menu you want to use in combination with the ABSolute client application. The menu is related to a user group and can also be in one or more different languages.

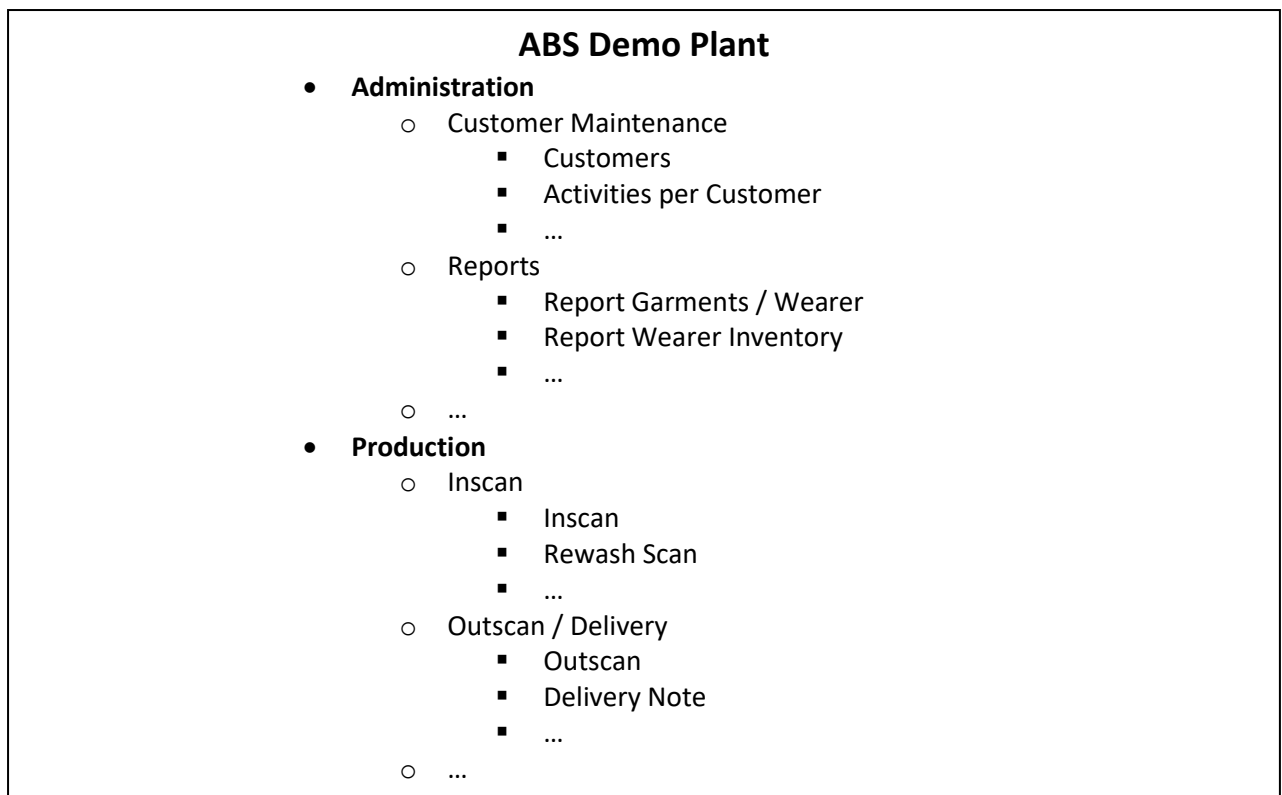
A menu is consisting of several levels:

- Top-level. The top-level is always the plant. There is only one top-level for each plant. For example: ABS Demo Plant.
- Level 1. This level is used to indicate the workspots. There can be one or more of these. For example: Administration, Production and Stockroom.
- Level 2. This level is used to indicate the menu-groups. There can be one or more of these. For example: Customer Maintenance, Wearer Maintenance and Product Structure.
- Level 3. This level is used to indicate the menu-items. There can be one or more of these. For example: Customers, Wearers, Countries, Languages and Products.

The Top-level is always created automatically, as soon as you start creating the menu and have selected the plant the menu belongs to.

The levels 1 and 2 are called nodes. You must create the nodes yourself. Level 1 is for each workspot and level 2 is for each menu-group you need. Level 3 are the menu-items, they always belong to a menu-group.

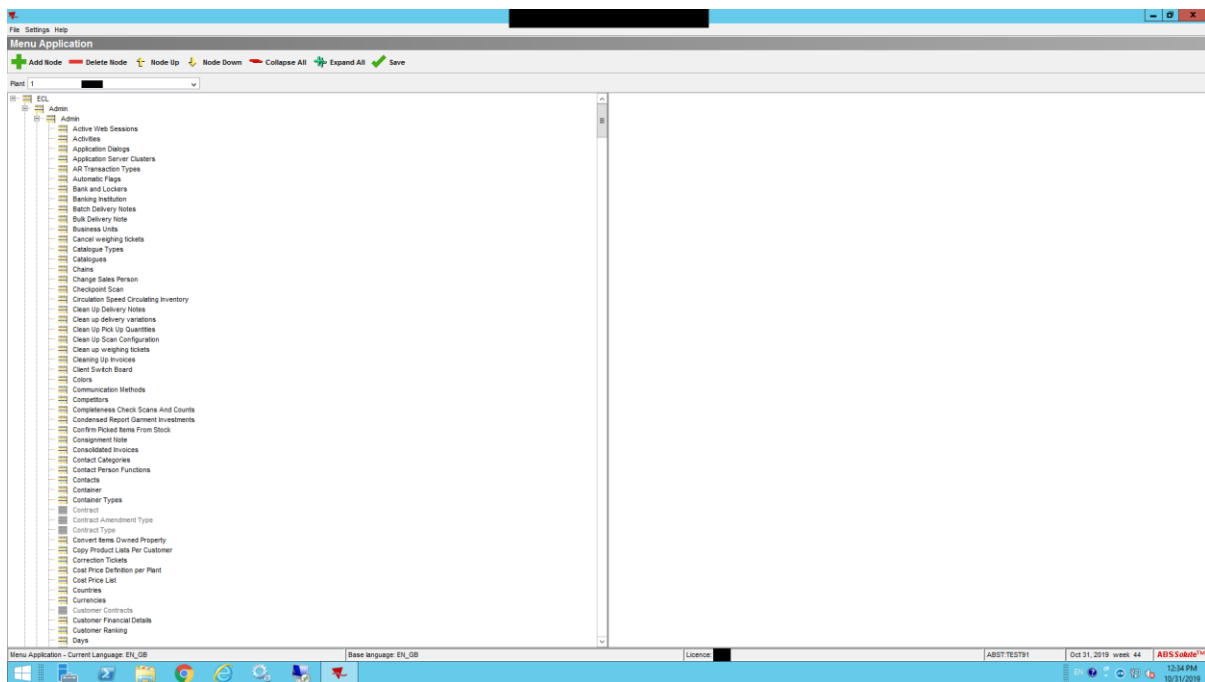
Example of a menu-structure:



Creating a menu

You create a menu in this way:

- Start the ABSSolute menu-application.
- Select the Plant for which the menu should be created. If you have more than one plant, you must make a separate menu for each plant. The top-level of the menu will be automatically created. This will have the name of the plant-description.
- Click on the 'Add Node' button to add the first node of level-1 (workspot). Enter a description for this workspot.
- If the top-level is selected, you can add a node of level-1 (workspot). If one of the nodes is selected of level 1 (workspot) then a node of level 2 will be created (menu-group). In both cases you click on the 'Add node' button to add the node. Afterwards you can enter a description for this workspot or menu-group.
- If the menu-group is selected, you can add a node of level-3 (menu-item). You do this by selecting the menu-item from the list that is shown in the right-part of the main-window and drag it to the node where it belongs to.
- The list of available menu-items / dialogs is based on the purchased modules of the ABSSolute application. This list can only be modified by when the menu has been made, click on the Save-button to save the menu.



The following buttons can be used:

Button	Description
Add node	Add a node (workspot or menu-group).
Delete node	Delete a node (workspot or menu-group), including all parts that fall under this node.
Node up	Move a node (workspot or menu-group) up.
Node down	Move a node (workspot or menu-group) down.
Collapse All	Collapse all nodes, to show only the top-node.
Expand All	Expand all nodes, to show all parts of the menu.

Save	Save the menu.
------	----------------

You can use the following menu-options:

Menu option	Description
File – Language	Here you switch to another language. The menu you made will be shown in another language. Be sure all have been translated before you do this!
File – Access rights	Set the access rights of the menu, like ‘read-only’ and ‘visible’.
File – Customize menu	If you are in the ‘access rights’-mode, you can switch back to the ‘customize menu’-mode.
File – Export menu	Export the menu to a file. Do this if the menu is needed on other clients.
File – Import menu	Import the menu from a file.
File – Delete all menu	Delete the menu. Do this if you want to import a menu or if you want to make another menu.
File – Exit	Exit the menu application.
Settings – Show only not assigned dialogs	If this has been set, only menu-items that are not yet in the menu will be shown. Otherwise, all menu-items always will be shown.
Settings – Show licenses	Shows if a menu-item is of type ‘single-task-user’ or ‘full-task-user’.
Settings – Show demo	Shows the date the demo will end; in case you have a demo-version.
Settings – Show access rights	Show the access rights or not.
Help – About ABS	Shows info about ABS.

1.1.1 Multi language menus

If you want to make multi-language menus and have created language definitions for that purpose, you will see at the bottom of the main-window a part where you can enter the foreign description for each workspace, menu-group and menu-item.

If you want to see the menu in another language, you can use the option File and Language. There you can select the language you want to use. But this can only be done if you are sure all has been translated (workspots, menu-groups and menu-items). Otherwise you will get the error-message ‘Error changing language!’. If you get this message, please press the ‘details’-button in this dialog to see what part is not translated yet.

1.2 Assigning Access rights

After you have created the menu and saved it, the next step is to assign rights for the menu. By doing this, you indicate what part of the menu will be visible to the user and what menu-item is read-only. Default all parts of the menu will not be visible at all, so you must do this after you have created the menu or added a new menu-part.

Overview of possible settings for each level:

Level	Rights
Top-level	None
Level 1 (workspace)	Visible, Default Menu

Level 2 (menu-group)	Visible
Level 3 (menu-item)	Visible, Read-Only

You assign rights in the following way:

- Start the menu application.
- Select the option 'File' and 'Access rights'.
- In the menu you have made, you click on a part of the menu and click the right-mouse-button. Now a menu will be shown.
- If the current part in the menu is of level-1 (workspot), you can select the options 'Visible' and 'Default Menu'.
- If the current part is level-2 (menu-group), you can select the option 'Visible'.
- If the current part is level-3 (menu-item) you can select the options 'Visible' and 'Read-only'.

Afterwards, click on the 'Save-button' to save the settings you have made.

You can use the following buttons:

Button	Description
Collapse all	Collapse all nodes to see only the top node.
Expand all	Expand all nodes, to see all parts of the menu.
Save	Save the access rights you have made.

1.3 Assigning User Groups

Apart from assigning the rights to each part of the menu, you can also assign the user groups. Each part of level-1 (workspot) can be used to assign to a different user group.

You assign user groups in the following way:

- Start the menu application and click first item that is shown at the left to show the menu you had created.
- Select the option 'File' and 'Access rights'.
- Click on the level-1 part (workspot) you want to assign to a user group.
- Select the user group from the selection above.
- Now click again on the level-1 part (workspot) you had selected.
- Assign the rights for this workspot by right-clicking the mouse-button.
- Save the changes by clicking on the 'Save'-button.

You can test it by starting the ABSolute client-application and login as the user that belongs to the user group you had assigned to the menu. After you have entered the login-name and password, you should see the workspots of the menu that belongs to the user group.

1.4 Error messages

During the creation of a menu it is possible an error message is shown. This can happen if you want to do something that is not allowed. The following is an overview of these messages:

Error message	Description	Solution
Error changing language	If you want to change the language with option 'File' and 'Languages' you get this message if not all has been translated. You can press the 'details'-button in this dialog to the first item that is not translated yet.	Translate the missing items.
User group access right not saved!	If you have changed something during 'access rights' but not saved it and want to switch back to 'customize menu', you will get this message.	Save before changing screens.
Set user group access rights first!	During the option 'Access rights' you have changed the 'user group' for the menu you were working on. You can only do this if you first set the access rights.	Save before changing screens.