

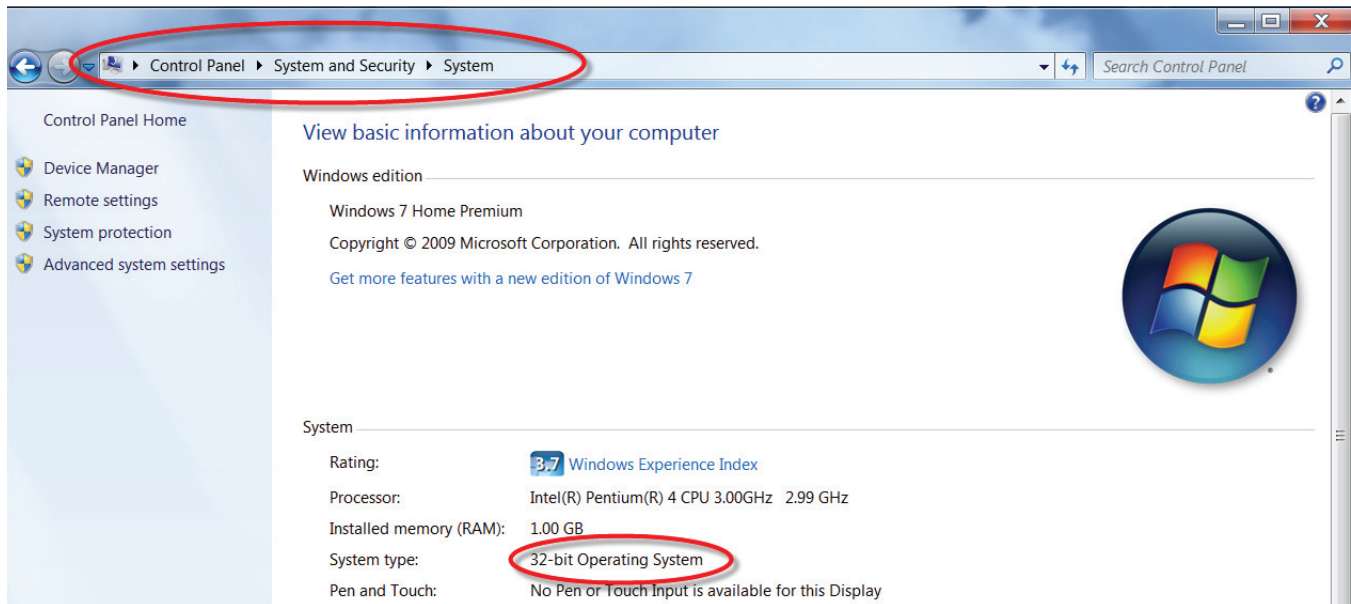
Psion set up for Windows 7

The Psion Workabout Pro uses “Windows Mobile Device Center “ to communicate with your PC.

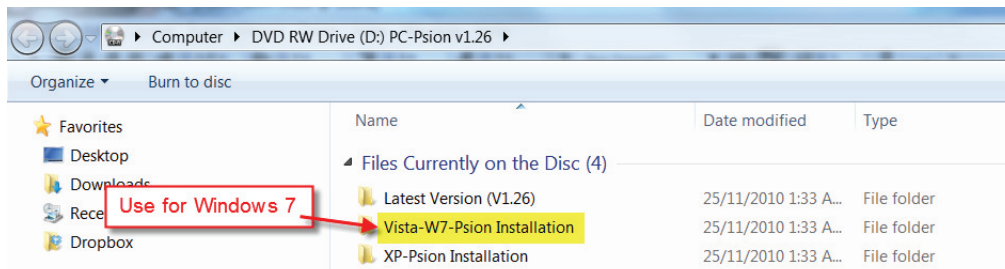
This program is already installed as part of the Windows operating system on your computer but it needs additional “drivers” to allow it to connect.

Do NOT connect the Psion USB cable until after installing the drivers!

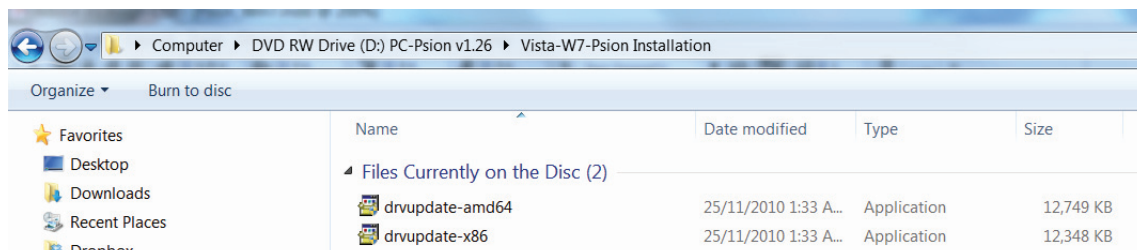
1. The first step is to check your computer’s operating system. Go to **Control Panel > System and Security > System**



2. Put the Stock Recorder CD into the CD drive of your PC and open the folder called **Vista-W7 Psion Installation**.

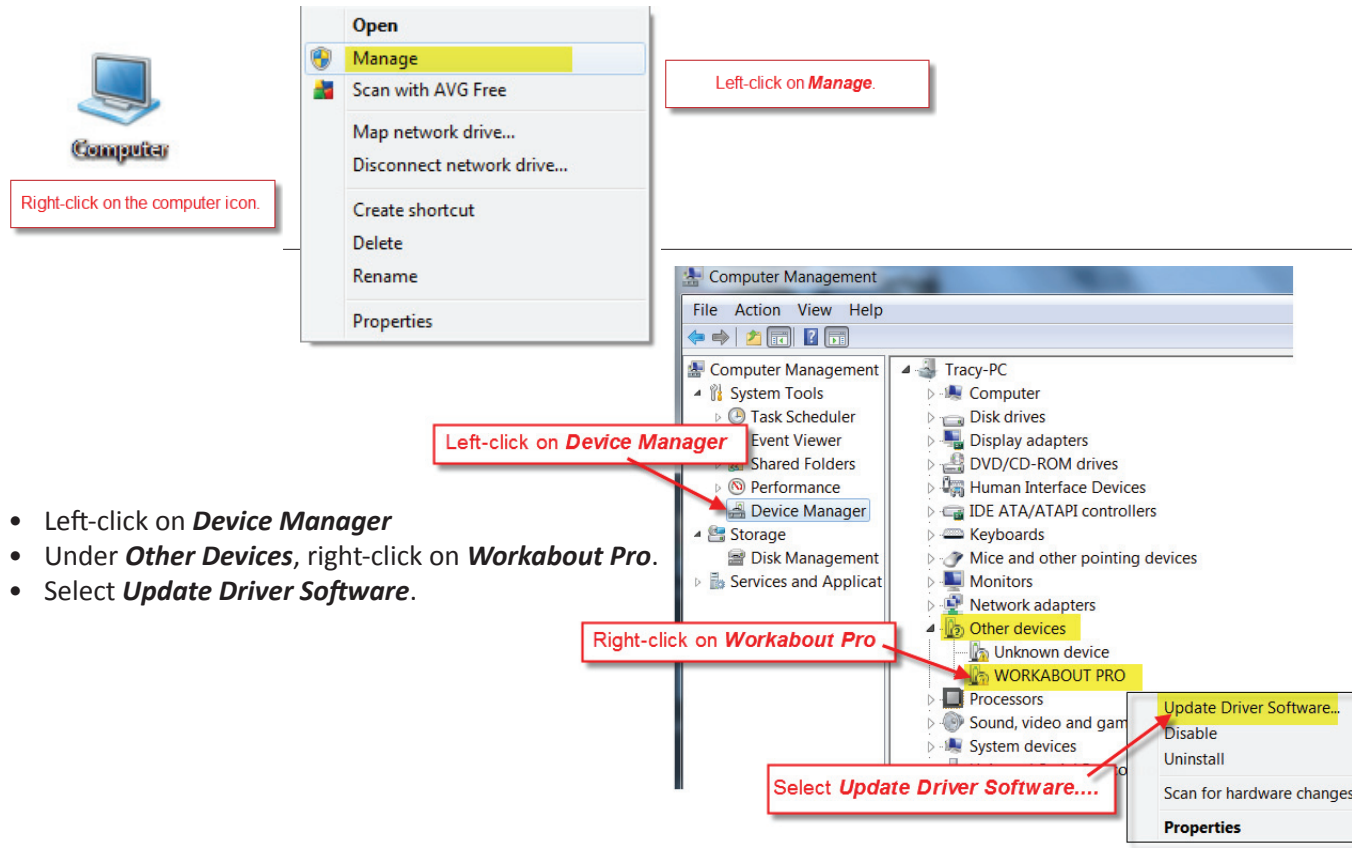


3. There are two files in the folder - **drvupdate-x86.exe** for a 32-bit operating system, and **drvupdate-amd64.exe** for a 64-bit operating system.
4. Double-click on the driver you need for your operating system. Permit any installation warnings and click on “Run”. Ignore or close a message saying the driver has not been successfully installed.



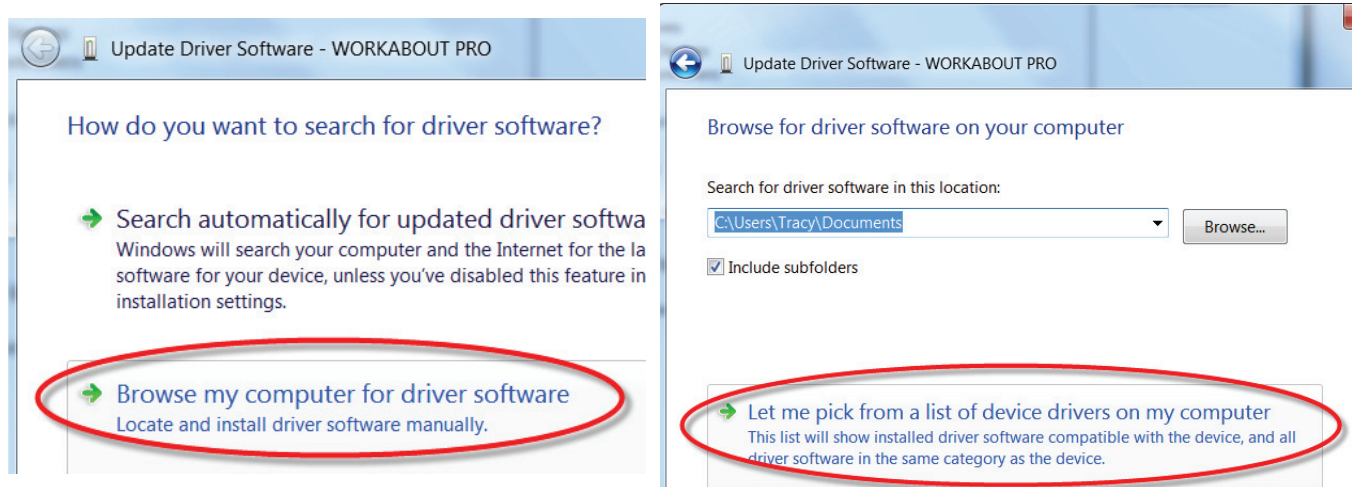
Connect the cradle to the computer, turn on the Psion and place it in the cradle. Your computer might automatically detect the Psion and ask you to set up a partnership. If not follow these steps:

- If a “**Found new hardware**” window opens, close it.
- Right-click the **Computer** icon on your desktop; left-click on **Manage**.

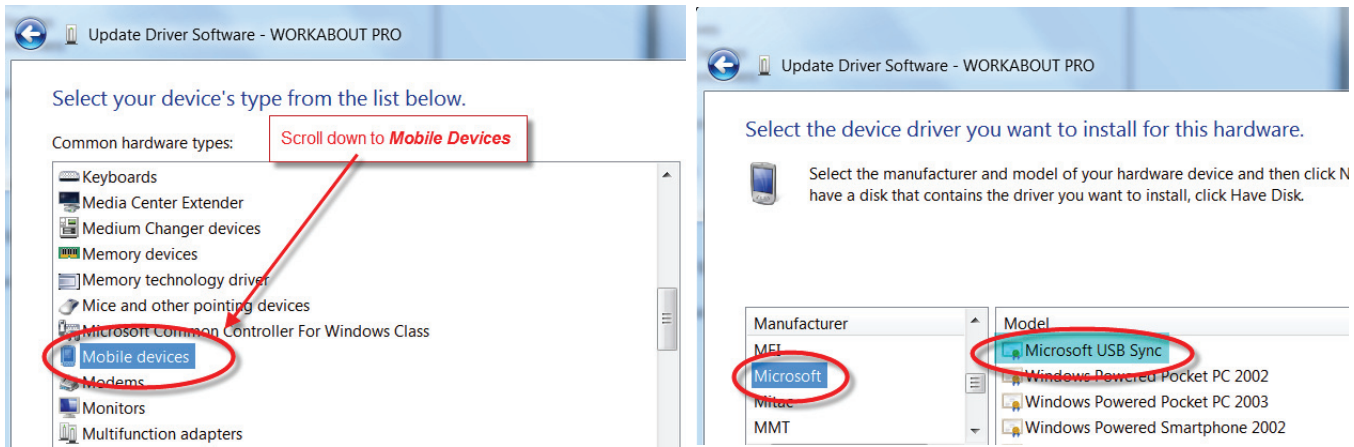


- Left-click on **Device Manager**
- Under **Other Devices**, right-click on **Workabout Pro**.
- Select **Update Driver Software**.

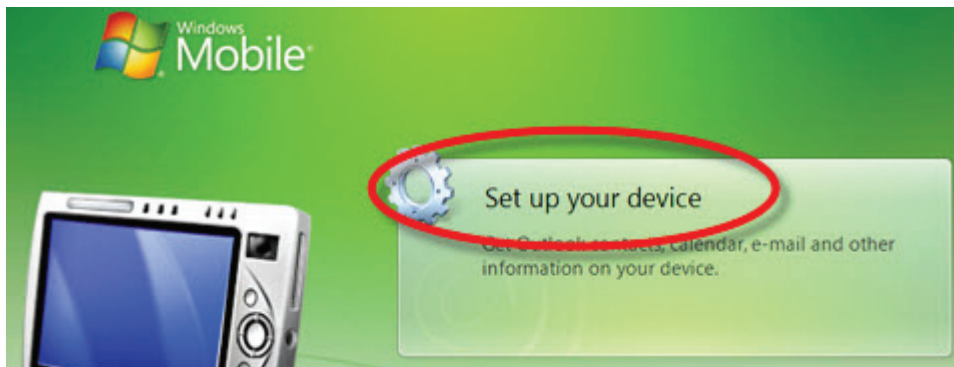
- Select “**Browse my computer for driver software**”.
- Select “**Let me pick from a list of device drivers**”.



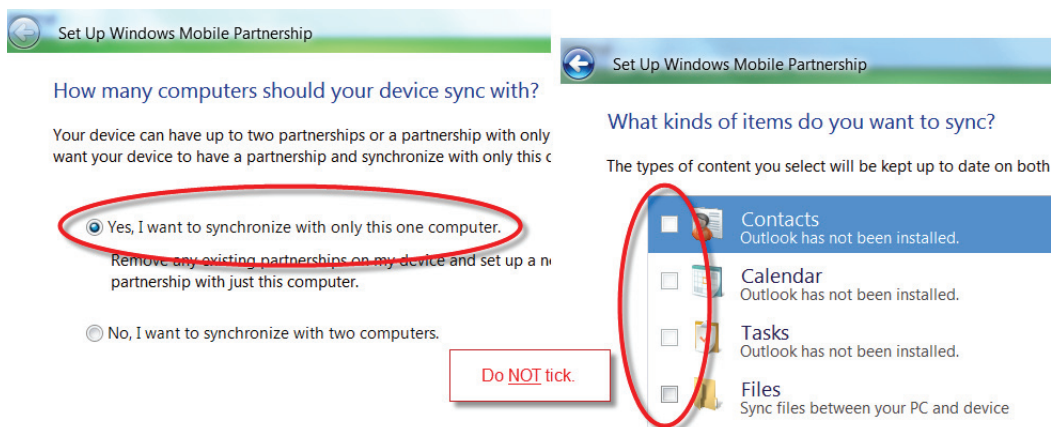
- Select **Mobile Devices** from **Common Hardware Types**
- Select **Microsoft** in the left-hand manufacturer's window.
- Select **Microsoft USB Sync** in the right-hand model window.
- Select **Next** and **Yes** to the warning.



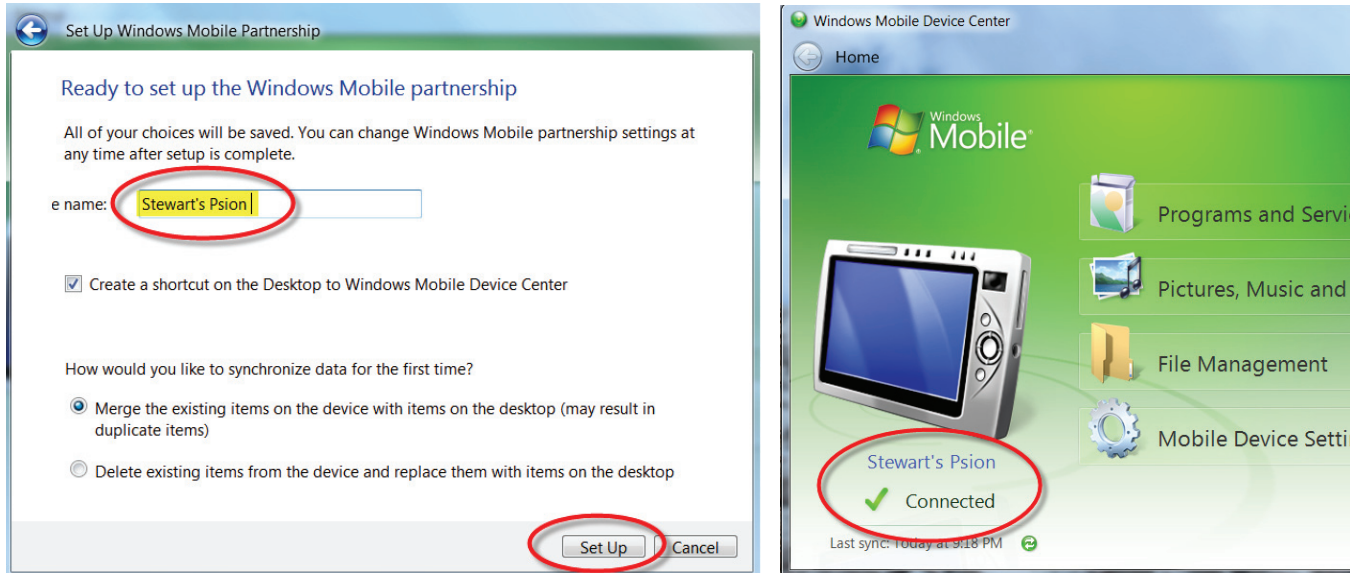
You are then asked to set up the device.



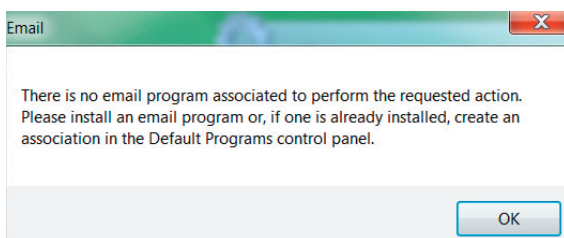
- Leave the default - **“Yes I want to synchronize with only this computer”** - click **Next**
- Options for **Contacts, Calendar, Tasks, Files** - leave all the boxed **unticked**



- In **“Ready to set up Windows Mobile partnership”** give your Psion a simple name.
- Accept the default **“Merge the existing items on the device...”**
- Click **Set Up**
- Your Psion is now in partnership and connected to your computer. You are ready to transfer data back and forth from FarmWorks.



- There will be an icon for the Mobile Device Center on your desktop and on the bottom task bar of your computer screen. Before transferring data to the computer double-click on the desktop icon to check that your Psion is connected.



Watch for this warning screen!

It can appear behind the Mobile Device Center window and stop your Psion from connecting. If you see this screen close it and your Psion should connect normally.